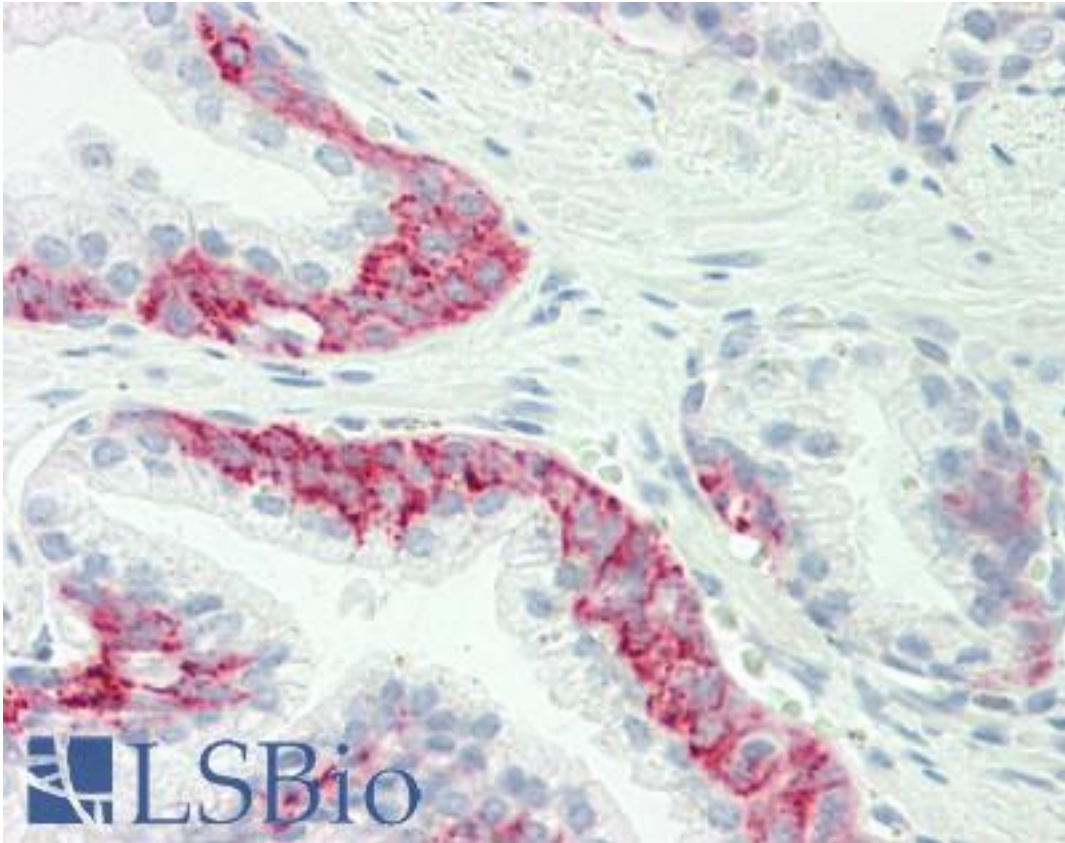


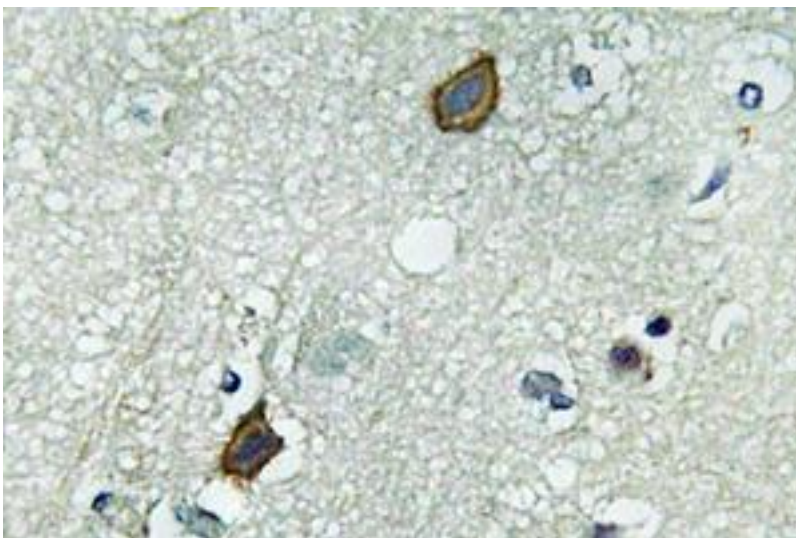
GJC1 / CX45 / Connexin 45 Rabbit anti-Human Polyclonal (Asn361) Antibody - LS-B10244 - LSBio	
CatalogID:	LS-B10244
Validation:	This antibody replaces catalog number LS-C177534. It has been validated for use in the following assays: IHC-P.
Target:	gap junction protein, gamma 1, 45kDa (GJC1)
Synonyms:	GJC1 Antibody, Connexin-45 Antibody, Connexin 45 Antibody, Gap junction alpha-7 protein Antibody, Gap junction gamma-1 protein Antibody, CX45 Antibody, Gap junction protein alpha-6 Antibody, GJA7 Antibody
Family / Subfamily:	Ion Channel / Connexin
Host	GJC1 antibody was produced in Rabbit
Clonality:	Polyclonal
Immunogen Species:	GJC1 / CX45 / Connexin 45 antibody was raised against Human
Antigen Type:	Synthetic peptide
Immunogen:	GJC1 / CX45 / Connexin 45 antibody was raised against synthetic peptide around Asn361 of human CX45 / Connexin 45
Specificity:	Human CX45 / Connexin 45
Epitope:	Asn361
Reactivity:	Human, Mouse, Rat
Purification:	Immunoaffinity purified
Presentation:	PBS, pH 7.2, 0.05% sodium azide
Recommended Storage:	Store at 4°C short term. Aliquot and store at -20°C long term. Avoid freeze-thaw cycles.
Uses:	IHC - Paraffin (10 µg/ml), Western blot (1:500 - 1:1000) (Optimal dilution to be determined by the researcher)
Size:	50 µl
Concentration:	1 mg/ml

Immunohistochemistry Image:



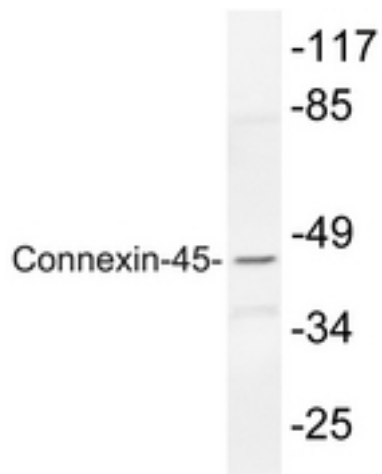
Human Prostate: Formalin-Fixed, Paraffin-Embedded (FFPE)

Immunohistochemistry Image:



IHC of Connexin-45 (N361) pAb in paraffin-embedded human brain tissue.

Western Blot Image:



Western blot of Connexin-45 (N361) pAb in extracts from rat heart.

Requested From:

Japan

Laboratory Reagent For In Vitro Research Use Only

Not for resale without prior written consent from LifeSpan BioSciences, Inc.

Created on 9/23/2014

© 2014 LifeSpan BioSciences