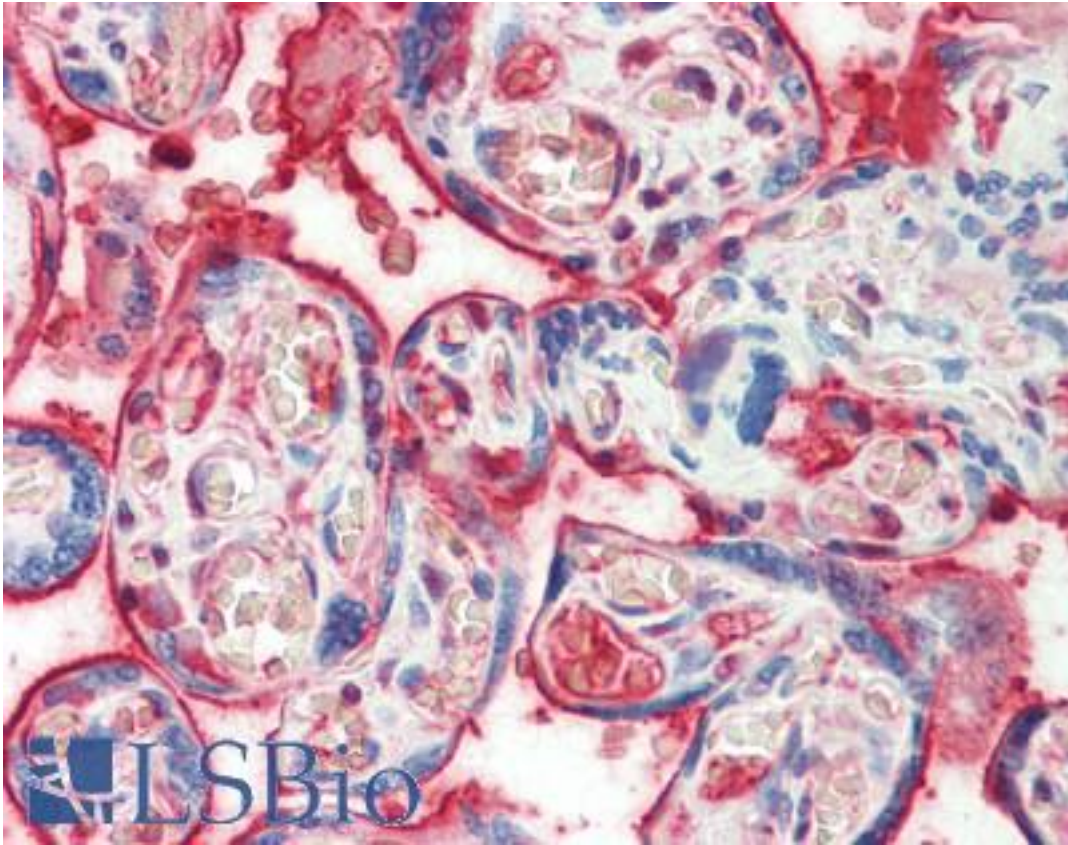


**F11 / FXI / Factor XI Sheep anti-Human Polyclonal Antibody - LS-B10243 - LSBio**

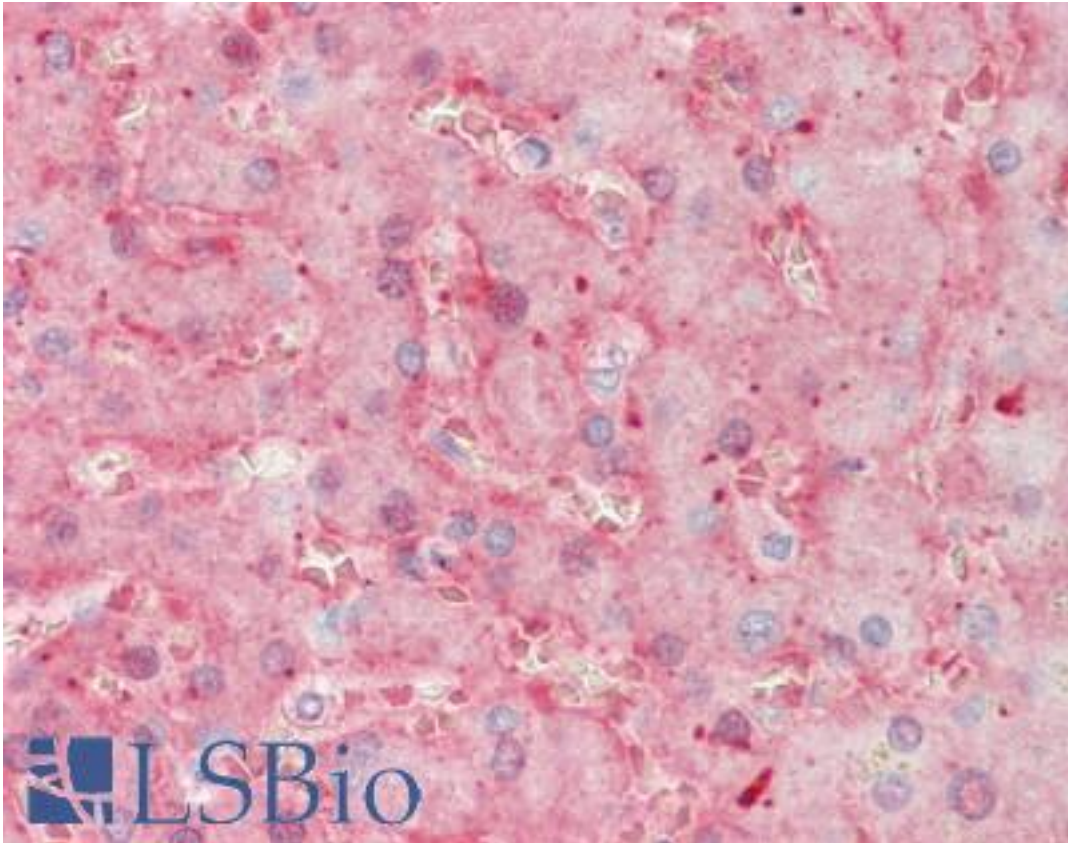
<b>CatalogID:</b>	LS-B10243
<b>Validation:</b>	This antibody replaces catalog number LS-C128939. It has been validated for use in the following assays: IHC-P.
<b>Target:</b>	coagulation factor XI (F11)
<b>Synonyms:</b>	F11 Antibody, Coagulation factor XI Antibody, Factor xi deficiency Antibody, F11 deficiency Antibody, Factor XI Antibody, PTA deficiency Antibody, PTA Antibody, Rosenthal syndrome Antibody, FXI Antibody
<b>Family / Subfamily:</b>	Protease / Serine S1
<b>Host</b>	F11 antibody was produced in Sheep
<b>Clonality:</b>	Polyclonal
<b>Isotype:</b>	IgG
<b>Immunogen Species:</b>	F11 / FXI / Factor XI antibody was raised against Human
<b>Immunogen:</b>	F11 / FXI / Factor XI antibody was raised against purified human Factor XI.
<b>Specificity:</b>	Recognizes human Factor XI.
<b>Reactivity:</b>	Human
<b>Purification:</b>	Purified
<b>Presentation:</b>	ddH2O, 50% glycerol.
<b>Recommended Storage:</b>	May be stored at 4°C for short-term only. Aliquot to avoid repeated freezing and thawing. Store at -20°C. Aliquots are stable for at least 12 months.
<b>Usage Summary:</b>	Suitable for use in ELISA and Western Blot. ELISA: 10 ug/ml. Western Blot: 10 ug/ml.
<b>Uses:</b>	IHC - Paraffin (5 µg/ml), Western blot (10 µg/ml), ELISA (10 µg/ml) (Optimal dilution to be determined by the researcher)
<b>Size:</b>	200 µg
<b>Concentration:</b>	1 mg/ml

**Immunohistochemistry Image:**



Human Placenta: Formalin-Fixed, Paraffin-Embedded (FFPE)

**Immunohistochemistry Image:**



Human Liver: Formalin-Fixed, Paraffin-Embedded (FFPE)

**Requested From:**

Japan

Laboratory Reagent For In Vitro Research Use Only

Not for resale without prior written consent from LifeSpan BioSciences, Inc.

Created on 9/23/2014

© 2014 LifeSpan BioSciences