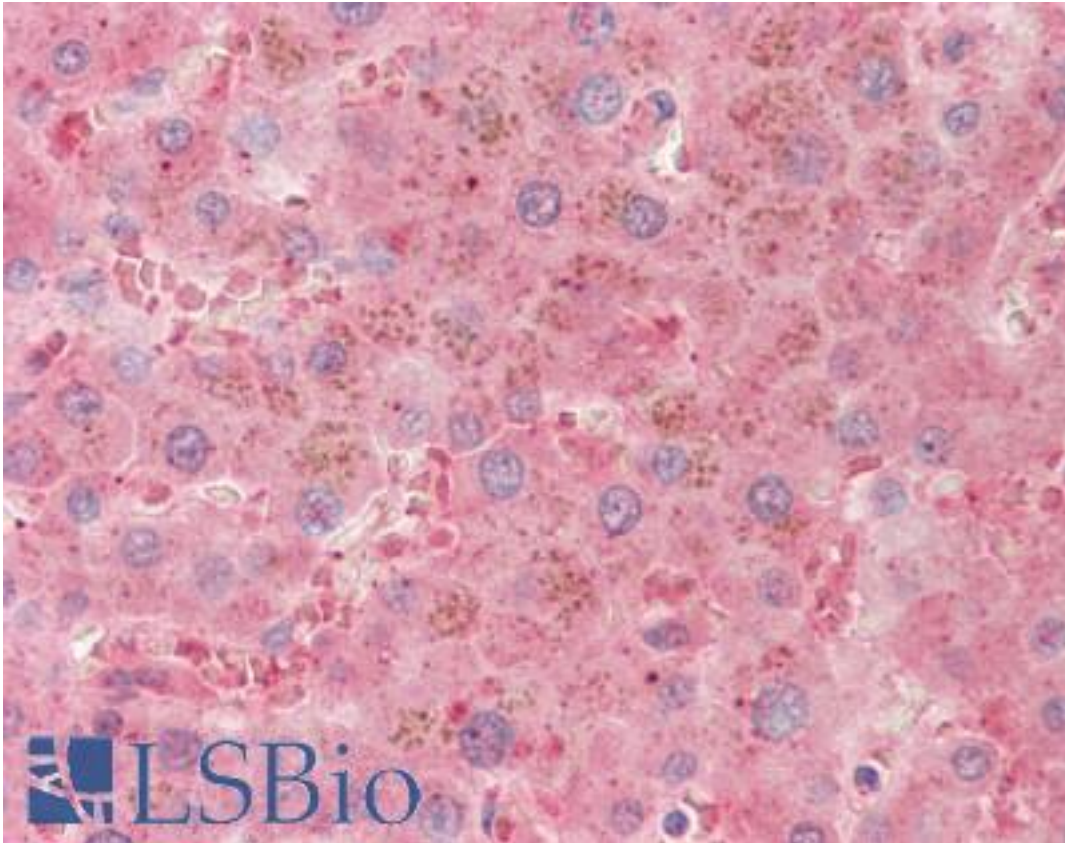


PLG / Plasmin / Plasminogen Sheep anti-Mouse Polyclonal Antibody - LS-B10241 - LSBio	
CatalogID:	LS-B10241
Validation:	This antibody replaces catalog number LS-C195874. It has been validated for use in the following assays: IHC-P.
Target:	plasminogen (PLG)
Synonyms:	PLG Antibody, Plasmin Antibody, Plasminogen Antibody
Family / Subfamily:	Protease / Serine S1
Host	PLG antibody was produced in Sheep
Clonality:	Polyclonal
Immunogen Species:	PLG / Plasmin / Plasminogen antibody was raised against Mouse
Immunogen:	PLG / Plasmin / Plasminogen antibody was raised against purified mouse plasminogen.
Specificity:	Mouse PLG / Plasmin / Plasminogen
Reactivity:	Mouse, Human, Rat
Purification:	Ion exchange chromatography
Presentation:	50% glycerol/H ₂ O (vol/vol)
Recommended Storage:	Store at -20°C.
Uses:	IHC - Paraffin (5 µg/ml), Western blot (10 µg/ml), ELISA (10 µg/ml), Radioimmunoassay (Optimal dilution to be determined by the researcher)
Size:	200 µg
Concentration:	14.3 mg/ml

Immunohistochemistry Image:



Human Liver: Formalin-Fixed, Paraffin-Embedded (FFPE)

Requested From:

Japan

Laboratory Reagent For In Vitro Research Use Only

Not for resale without prior written consent from LifeSpan BioSciences, Inc.

Created on 9/23/2014

© 2014 LifeSpan BioSciences