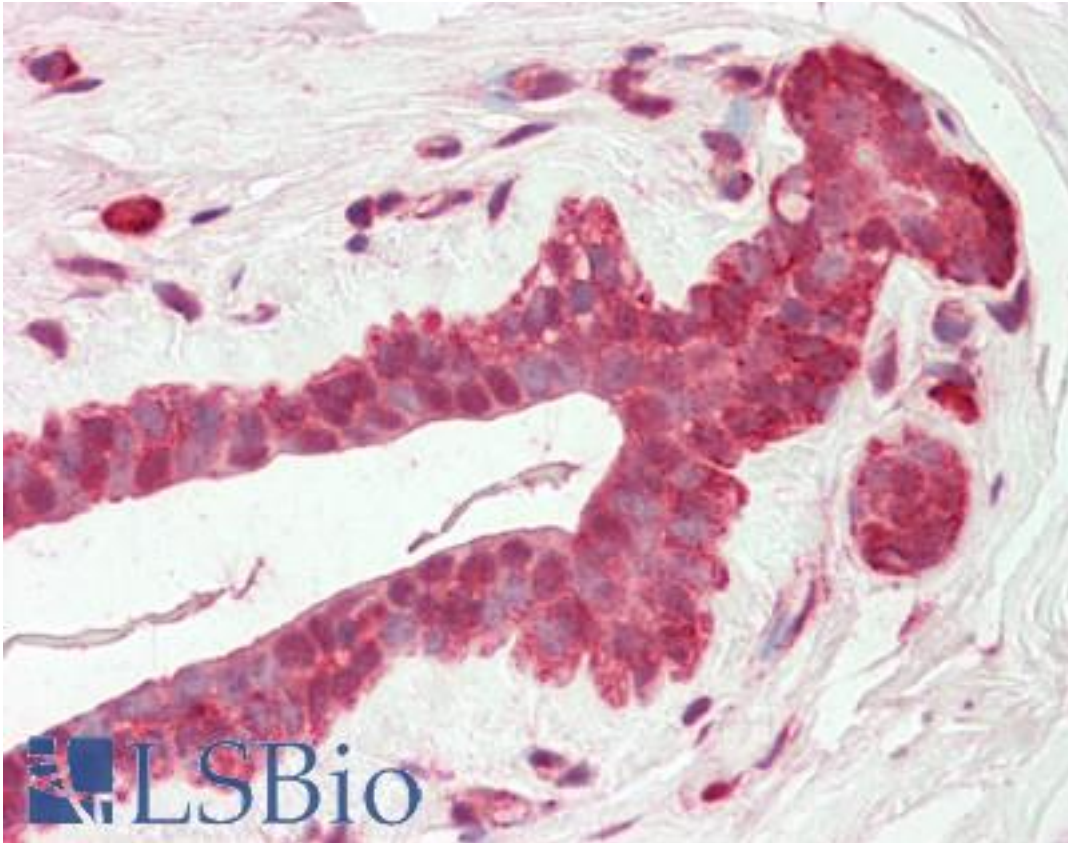


AMIGO2 Rabbit anti-Human Polyclonal (C-Terminus) Antibody - LS-B10237 - LSBio

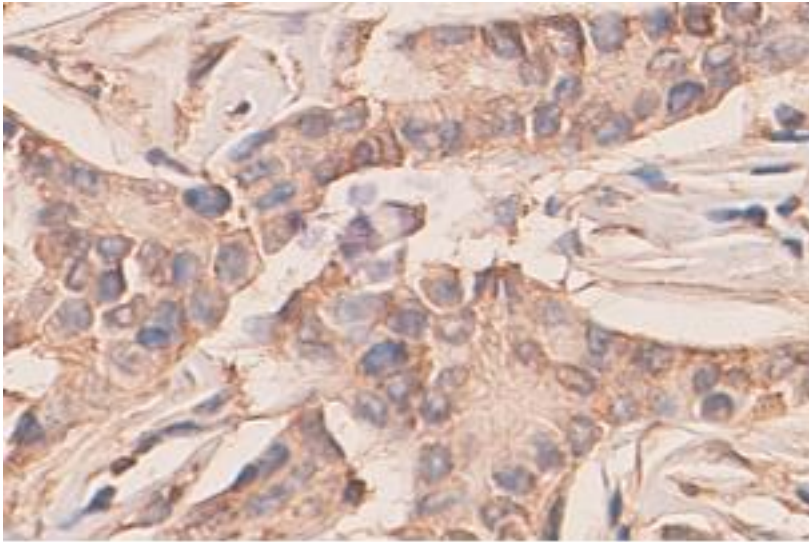
CatalogID:	LS-B10237
Validation:	This antibody replaces catalog number LS-C137045. It has been validated for use in the following assays: IHC-P.
Target:	adhesion molecule with Ig-like domain 2 (AMIGO2)
Synonyms:	AMIGO2 Antibody, ALI1 Antibody, Alivin 1 Antibody, Alivin-1 Antibody, Alvin 1 Antibody, AMIGO-2 Antibody, Amphoterin induced gene 2 Antibody, Amphoterin-induced protein 2 Antibody, Transmembrane protein AMIGO2 Antibody, DEGA Antibody
Host	AMIGO2 antibody was produced in Rabbit
Clonality:	Polyclonal
Isotype:	IgG
Immunogen Species:	AMIGO2 antibody was raised against Human
Antigen Type:	Synthetic peptide
Immunogen:	AMIGO2 antibody was raised against a 15 amino acid peptide from near the C terminal residues of human AMIGO2
Epitope:	C-Terminus
Reactivity:	Human
Purification:	Affinity purified
Presentation:	PBS, pH 7.4, 0.02% sodium azide
Recommended Storage:	Store at -20°C for up to one year.
Uses:	IHC - Paraffin (10 µg/ml), ELISA (1:80000) (Optimal dilution to be determined by the researcher)
Size:	50 µl
Concentration:	1 mg/ml

Immunohistochemistry Image:



Human Breast: Formalin-Fixed, Paraffin-Embedded (FFPE)

Immunohistochemistry Image:



Immunohistochemical staining of formalin-fixed paraffin-embedded breast carcinoma showing membrane staining with anti-AMIGO2 antibody dilution: 1:100.

Requested From:

Japan

Laboratory Reagent For In Vitro Research Use Only

Not for resale without prior written consent from LifeSpan BioSciences, Inc.

Created on 9/23/2014

© 2014 LifeSpan BioSciences