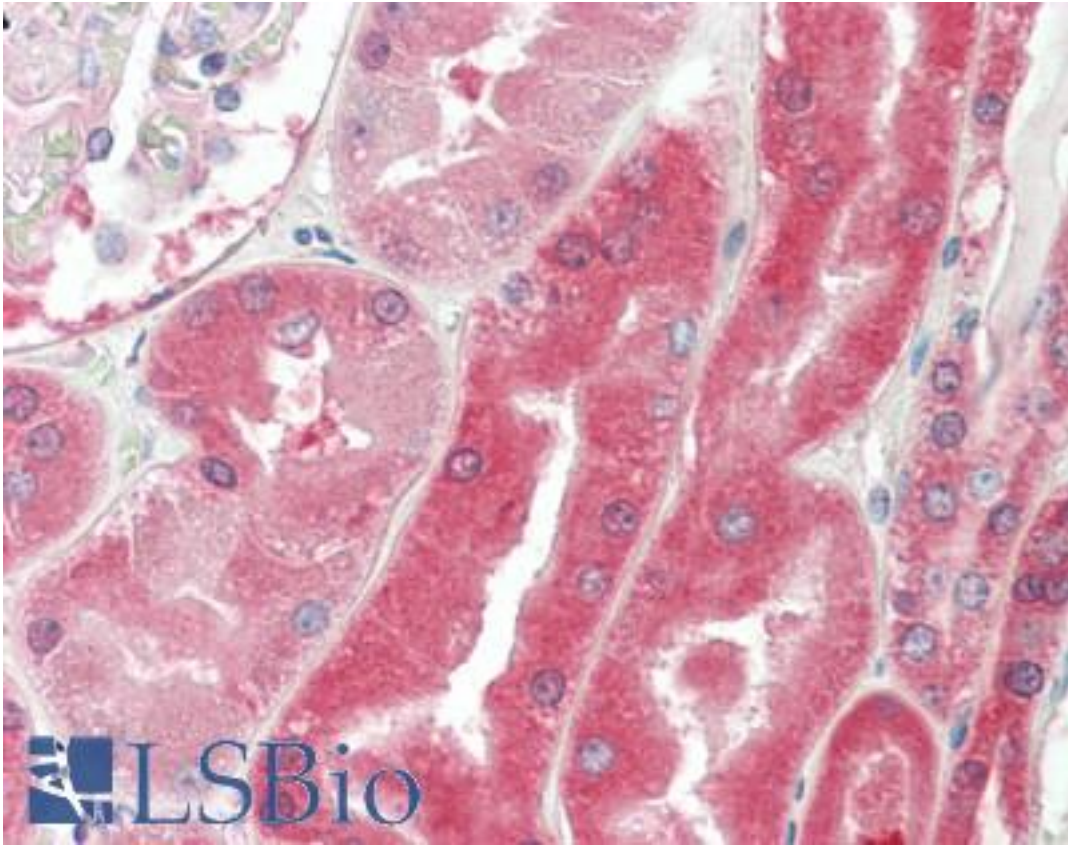


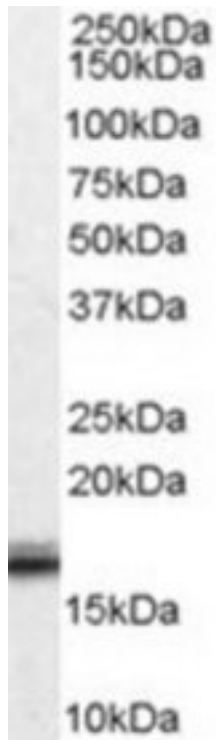
VHL / Von Hippel Lindau Goat anti-Human Polyclonal Antibody - LS-B10235 - LSBio	
<b>CatalogID:</b>	LS-B10235
<b>Validation:</b>	This antibody replaces catalog number LS-C34681. It has been validated for use in the following assays: IHC-P.
<b>Target:</b>	von Hippel-Lindau tumor suppressor, E3 ubiquitin protein ligase (VHL)
<b>Synonyms:</b>	VHL Antibody, Elongin binding protein Antibody, HRCA1 Antibody, RCA1 Antibody, VHL1 Antibody, Von Hippel-Lindau syndrome Antibody, Protein G7 Antibody, PVHL Antibody
<b>Host</b>	VHL antibody was produced in Goat
<b>Clonality:</b>	Polyclonal
<b>Immunogen Species:</b>	VHL / Von Hippel Lindau antibody was raised against Human
<b>Antigen Type:</b>	Synthetic peptide
<b>Immunogen:</b>	VHL / Von Hippel Lindau antibody was raised against synthetic peptide C-RSLVKPENYRRLD from an internal region of human VHL (NP_000542.1; NP_937799.1). Percent identity by BLAST analysis: Human, Gorilla, Orangutan, Gibbon, Monkey, Marmoset, Mouse, Rat, Panda, Bat, Dog, Rabbit (100%); Elephant, Bovine, Pig (92%).
<b>Specificity:</b>	Human VHL. This antibody is expected to recognise both reported isoforms (NP_000542.1 and NP_937799.1).
<b>Reactivity:</b>	Human, Gorilla, Orangutan, Gibbon, Monkey, Mouse, Rat, Bat, Dog, Rabbit
<b>Purification:</b>	Immunoaffinity purified
<b>Presentation:</b>	Tris-buffered saline, pH 7.3, 0.5% BSA, 0.02% sodium azide
<b>Recommended Storage:</b>	Store at -20°C. Minimize freezing and thawing.
<b>Usage Summary:</b>	Peptide ELISA: antibody detection limit dilution 1:128000. Western blot: Approx 17 kDa band observed in Human Ovary and Testis lysates and in lysates of all cell lines tested (calculated MW of 19.7 kDa according to NP_937799.1). Recommended concentration: 0.01-0.03 ug/ml.
<b>Uses:</b>	IHC - Paraffin (5 µg/ml), Western blot (0.01 - 0.03 µg/ml), ELISA (1:128000) (Optimal dilution to be determined by the researcher)
<b>Size:</b>	50 µg
<b>Concentration:</b>	0.5 mg/ml

**Immunohistochemistry Image:**



Human Kidney: Formalin-Fixed, Paraffin-Embedded (FFPE)

**Western Blot Image:**



VHL antibody (0.01 ug/ml) staining of Human Ovary lysate (35 ug protein/ml in RIPA buffer). Primary incubation was 1 hour. Detected by chemiluminescence.

**Requested From:**

Japan

Laboratory Reagent For In Vitro Research Use Only

Not for resale without prior written consent from LifeSpan BioSciences, Inc.

Created on 9/23/2014

© 2014 LifeSpan BioSciences