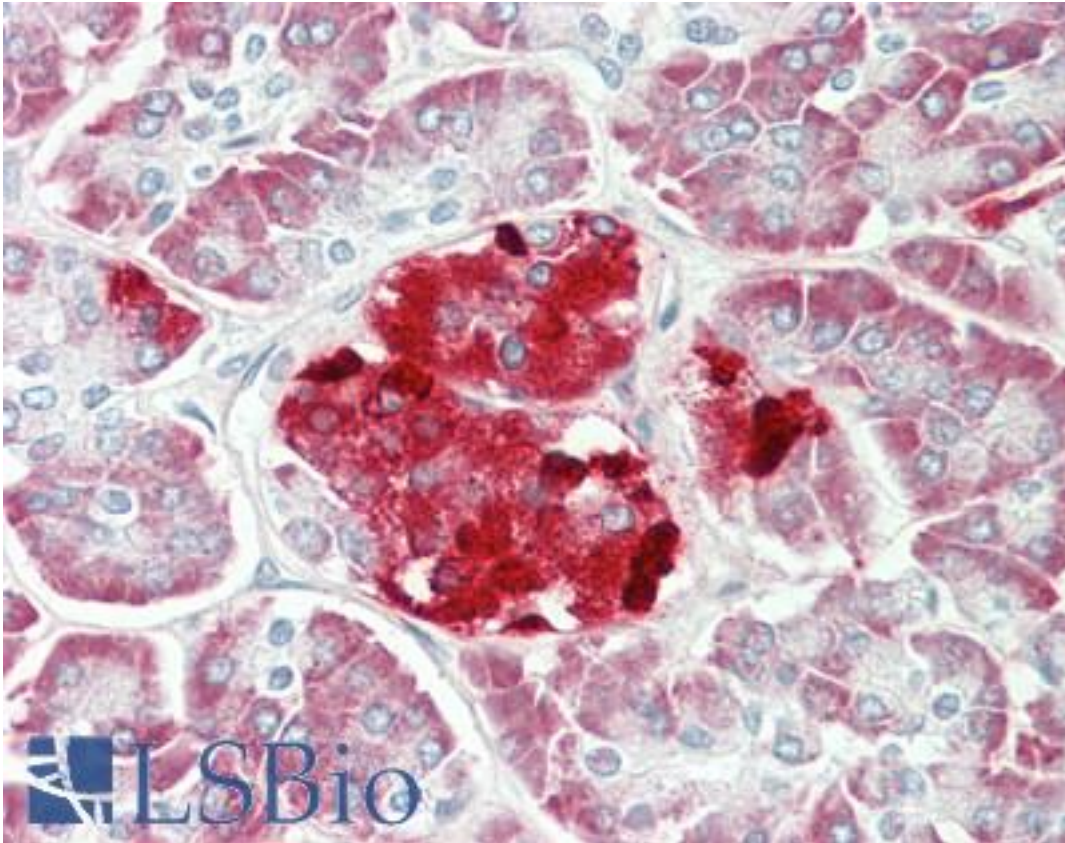


ERO1LB Rabbit anti-Human Polyclonal (aa274-304) Antibody - LS-B10234 - LSBio

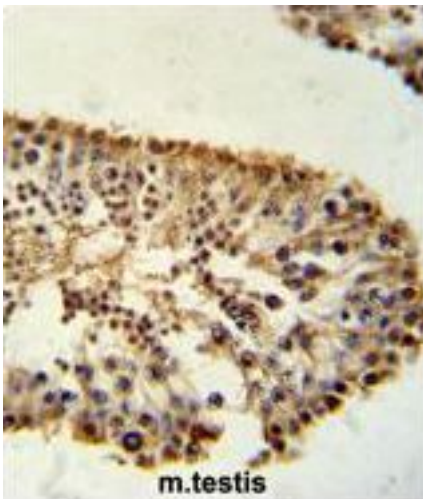
CatalogID:	LS-B10234
Validation:	This antibody replaces catalog number LS-C167814. It has been validated for use in the following assays: IHC-P.
Target:	ERO1-like beta (<i>S. cerevisiae</i>) (ERO1LB)
Synonyms:	ERO1LB Antibody, ERO1-L(beta) Antibody, ERO1-like protein beta Antibody, ERO1-like beta (<i>S. cerevisiae</i>) Antibody, ERO1-L-beta Antibody, Oxidoreductin-1-L-beta Antibody
Host	ERO1LB antibody was produced in Rabbit
Clonality:	Polyclonal
Immunogen Species:	ERO1LB antibody was raised against Human
Antigen Type:	Synthetic peptide
Immunogen:	ERO1LB antibody was raised against kLH-conjugated synthetic peptide from C-terminal region of human ERO1LB.
Specificity:	Human ERO1LB
Epitope:	aa274-304
Reactivity:	Human, Mouse
Purification:	Immunoaffinity purified
Presentation:	PBS, 0.09% sodium azide
Recommended Storage:	Maintain refrigerated at 2-8°C for up to 6 months. For long term storage store at -20°C.
Uses:	IHC - Paraffin (1:50 - 1:100), Western blot (1:1000), Flow Cytometry (1:10 - 1:50) (Optimal dilution to be determined by the researcher)
Size:	200 µl

Immunohistochemistry Image:



Human Pancreas: Formalin-Fixed, Paraffin-Embedded (FFPE)

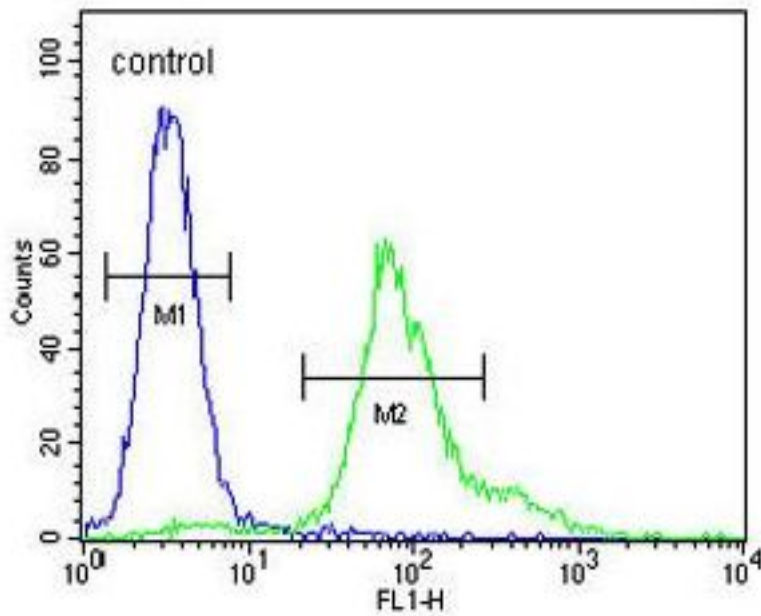
Immunohistochemistry Image:



ERO1LB Antibody (C-term) IHC of formalin fixed and paraffin embedded mouse testis tissue followed by peroxidase conjugation of the secondary antibody and DAB staining. This demonstrates the use of the ERO1LB Antibody (C-term) for immunohistochemistry.

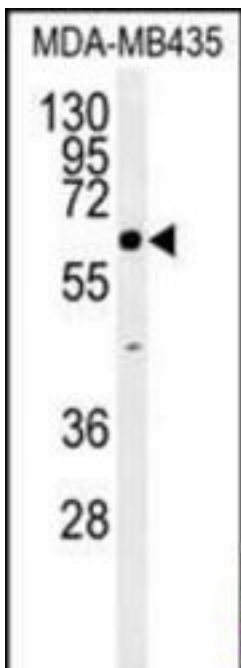
Flow Cytometry Image:

MDA-MB435



ERO1LB Antibody (C-term) flow cytometry of MDA-MB435 cells (right histogram) compared to a negative control cell (left histogram). FITC-conjugated goat-anti-rabbit secondary antibodies were used for the analysis.

Western Blot Image:



ERO1LB Antibody (C-term) Western blot of MDA-MB435 cell line lysates (35 ug/lane). This demonstrates the ERO1LB antibody detected the ERO1LB protein (arrow).

Requested From:	Japan
Laboratory Reagent For In Vitro Research Use Only	
Not for resale without prior written consent from LifeSpan BioSciences, Inc.	
Created on 9/23/2014	
© 2014 LifeSpan BioSciences	