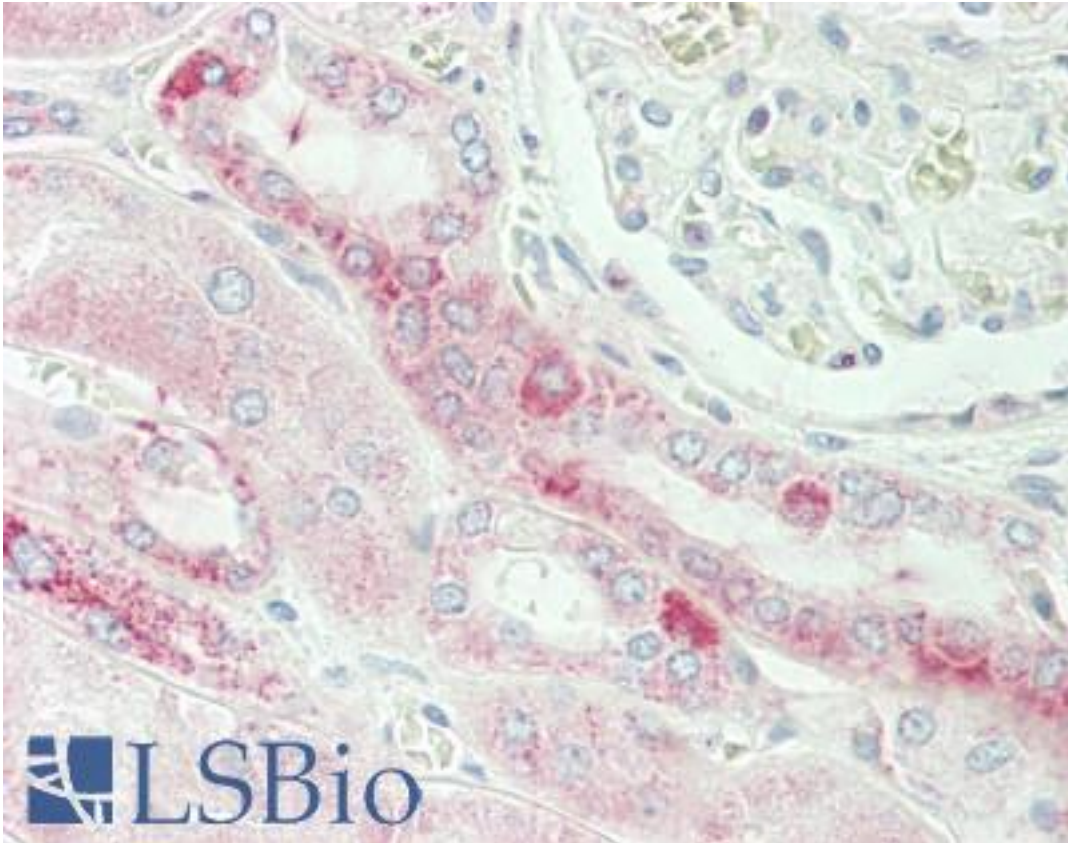


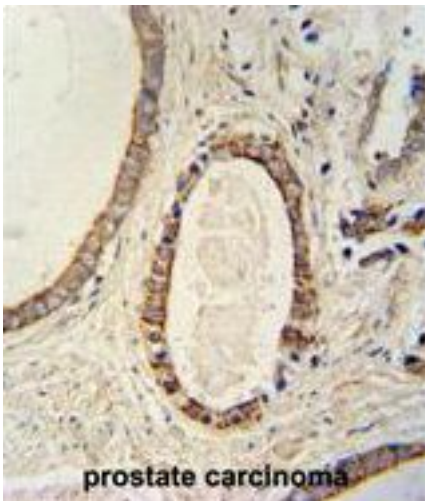
TMEM214 / FLJ20254 Rabbit anti-Human Polyclonal (aa45-74) Antibody - LS-B10233 - LSBio	
<b>CatalogID:</b>	LS-B10233
<b>Validation:</b>	This antibody replaces catalog number LS-C162005. It has been validated for use in the following assays: IHC-P.
<b>Target:</b>	transmembrane protein 214 (TMEM214)
<b>Synonyms:</b>	TMEM214 Antibody, FLJ20254 Antibody, Transmembrane protein 214 Antibody
<b>Host</b>	TMEM214 antibody was produced in Rabbit
<b>Clonality:</b>	Polyclonal
<b>Immunogen Species:</b>	TMEM214 / FLJ20254 antibody was raised against Human
<b>Antigen Type:</b>	Synthetic peptide
<b>Immunogen:</b>	TMEM214 / FLJ20254 antibody was raised against kLH-conjugated synthetic peptide from N-terminal region of human TMEM214.
<b>Specificity:</b>	Human FLJ20254 / TMEM214
<b>Epitope:</b>	aa45-74
<b>Reactivity:</b>	Human
<b>Purification:</b>	Immunoaffinity purified
<b>Presentation:</b>	PBS, 0.09% sodium azide
<b>Recommended Storage:</b>	Maintain refrigerated at 2-8°C for up to 6 months. For long term storage store at -20°C.
<b>Uses:</b>	IHC - Paraffin (1:50 - 1:100), Western blot (1:1000), Flow Cytometry (1:10 - 1:50) (Optimal dilution to be determined by the researcher)
<b>Size:</b>	200 µl

**Immunohistochemistry Image:**



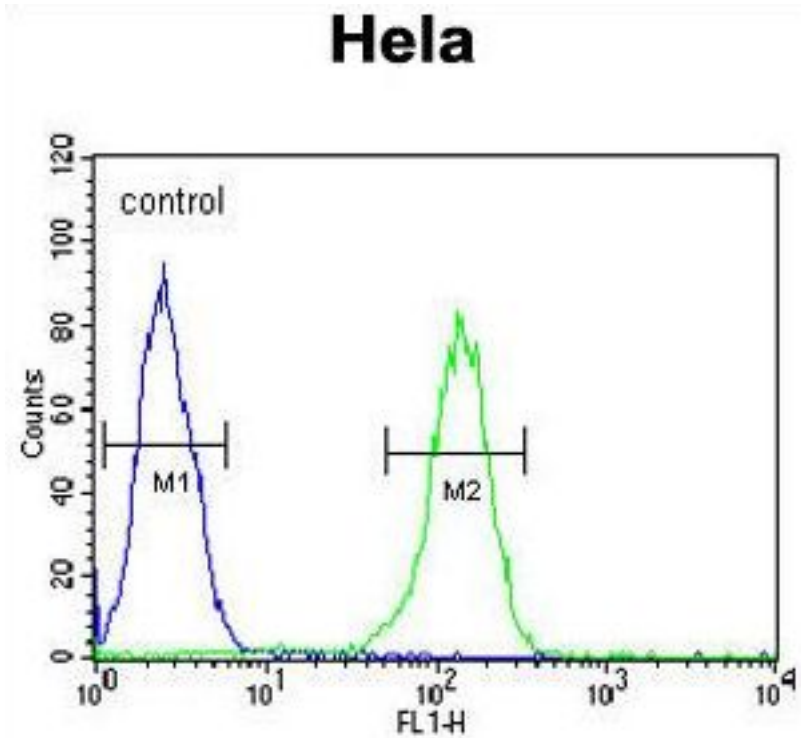
Human Kidney: Formalin-Fixed, Paraffin-Embedded (FFPE)

**Immunohistochemistry Image:**



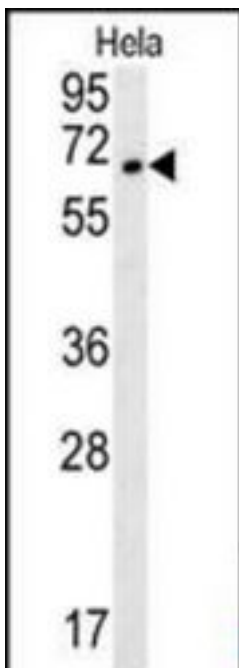
TMEM214 antibody (N-term) IHC of formalin fixed and paraffin embedded human prostate carcinoma followed by peroxidase conjugation of the secondary antibody and DAB staining. This demonstrates the use of the TMEM214 antibody (N-term) for immunohistochemistry.

**Flow Cytometry Image:**



TMEM214 Antibody (N-term) flow cytometry of HeLa cells (right histogram) compared to a negative control cell (left histogram). FITC-conjugated goat-anti-rabbit secondary antibodies were used for the analysis.

**Western Blot Image:**



TMEM214 Antibody (N-term) Western blot of HeLa cell line lysates (35 ug/lane). This demonstrates the TMEM214 antibody detected the TMEM214 protein (arrow).

<b>Requested From:</b>	Japan
Laboratory Reagent For In Vitro Research Use Only	
Not for resale without prior written consent from LifeSpan BioSciences, Inc.	
Created on 9/23/2014	
© 2014 LifeSpan BioSciences	