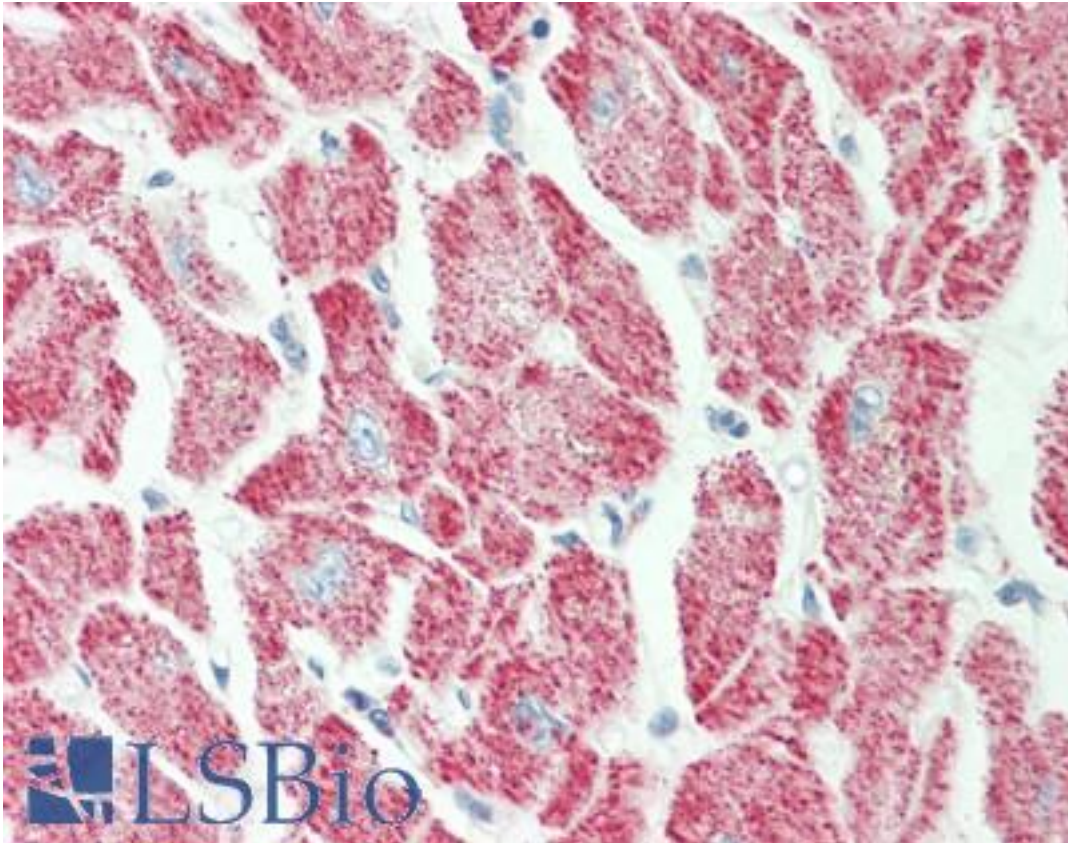


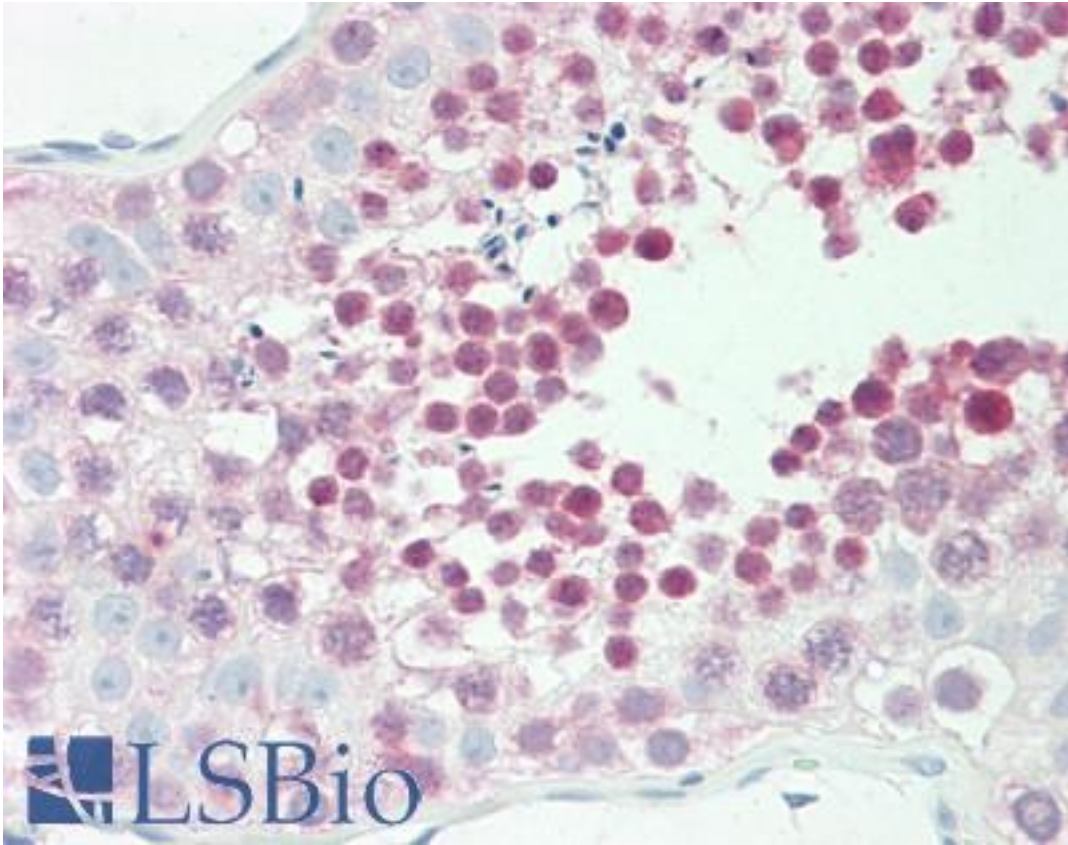
GLRX3 / Glutaredoxin 3 Rabbit anti-Human Polyclonal (aa88-118) Antibody - LS-B10231 - LSBio	
CatalogID:	LS-B10231
Validation:	This antibody replaces catalog number LS-C160352. It has been validated for use in the following assays: IHC-P.
Target:	glutaredoxin 3 (GLRX3)
Synonyms:	GLRX3 Antibody, BA500G10.4 Antibody, Glutaredoxin-3 Antibody, GRX3 Antibody, GLRX4 Antibody, Glutaredoxin 4 Antibody, PICOT Antibody, Thioredoxin-like protein 2 Antibody, Thioredoxin-like Antibody, Thioredoxin-like 2 Antibody, TXNL2 Antibody, TXNL3 Antibody, Glutaredoxin 3 Antibody, GRX4 Antibody, PKC-theta-interacting protein Antibody, PKCq-interacting protein Antibody
Host	GLRX3 antibody was produced in Rabbit
Clonality:	Polyclonal
Immunogen Species:	GLRX3 / Glutaredoxin 3 antibody was raised against Human
Antigen Type:	Synthetic peptide
Immunogen:	GLRX3 / Glutaredoxin 3 antibody was raised against kLH-conjugated synthetic peptide from N-terminal region of human TXNL2.
Specificity:	Human GLRX3 / Glutaredoxin 3
Epitope:	aa88-118
Reactivity:	Human, Mouse
Purification:	Immunoaffinity purified
Presentation:	PBS, 0.09% sodium azide
Recommended Storage:	Maintain refrigerated at 2-8°C for up to 6 months. For long term storage store at -20°C.
Uses:	IHC - Paraffin (1:100), Western blot (1:1000), Flow Cytometry (1:10 - 1:50) (Optimal dilution to be determined by the researcher)
Size:	200 µl

Immunohistochemistry Image:



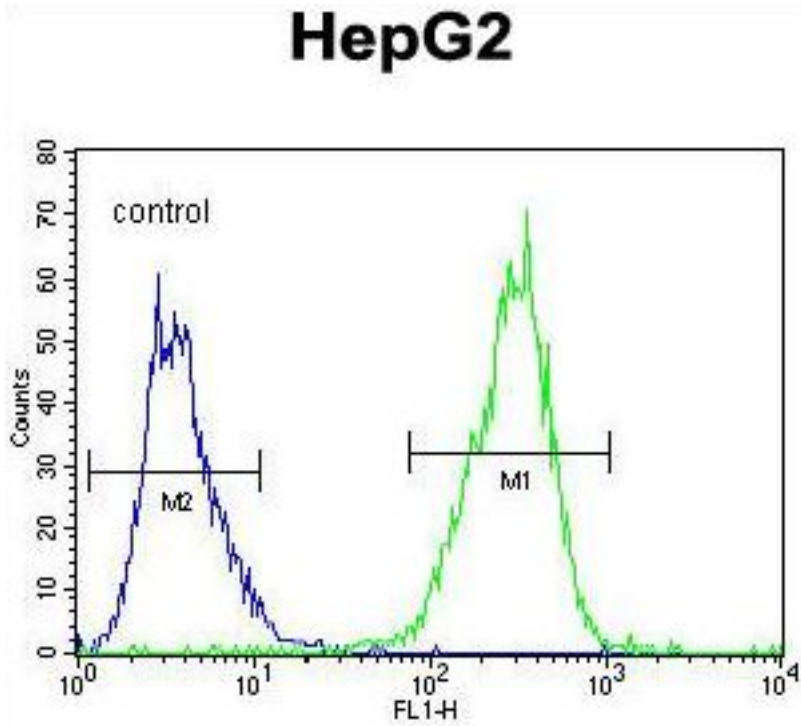
Human Heart: Formalin-Fixed, Paraffin-Embedded (FFPE)

Immunohistochemistry Image:



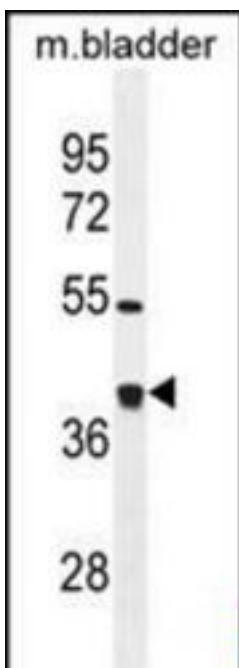
Human Testis: Formalin-Fixed, Paraffin-Embedded (FFPE)

Flow Cytometry Image:



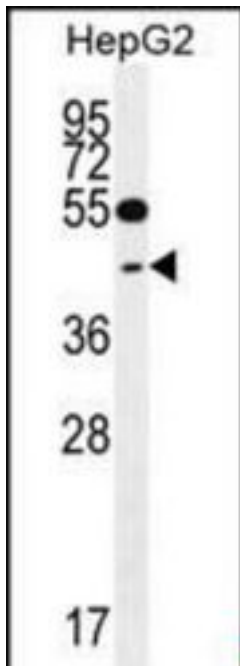
TXNL2 Antibody (N-term) flow cytometry of HepG2 cells (right histogram) compared to a negative control cell (left histogram). FITC-conjugated goat-anti-rabbit secondary antibodies were used for the analysis.

Western Blot Image:



TXNL2 Antibody (N-term) Western blot of mouse bladder tissue lysates (35 ug/lane). This demonstrates the TXNL2 antibody detected the TXNL2 protein (arrow).

Western Blot Image:



TXNL2 Antibody (N-term) Western blot of HepG2 cell line lysates (35 ug/lane). This demonstrates the TXNL2 antibody detected the TXNL2 protein (arrow).

Requested From:

Japan

Laboratory Reagent For In Vitro Research Use Only

Not for resale without prior written consent from LifeSpan BioSciences, Inc.

Created on 9/23/2014

© 2014 LifeSpan BioSciences