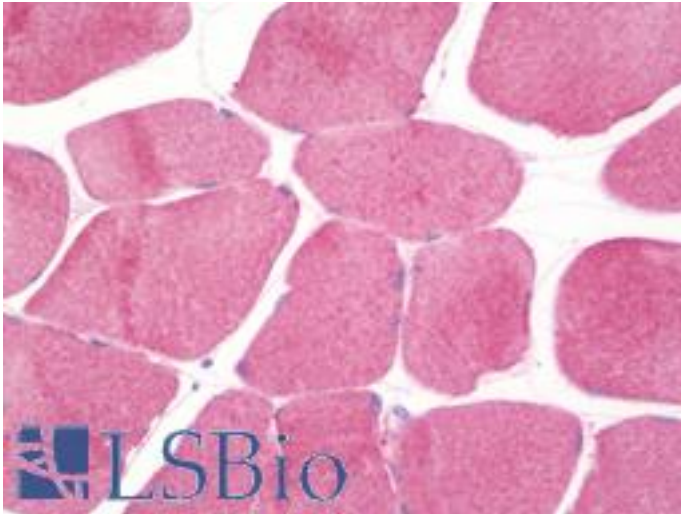


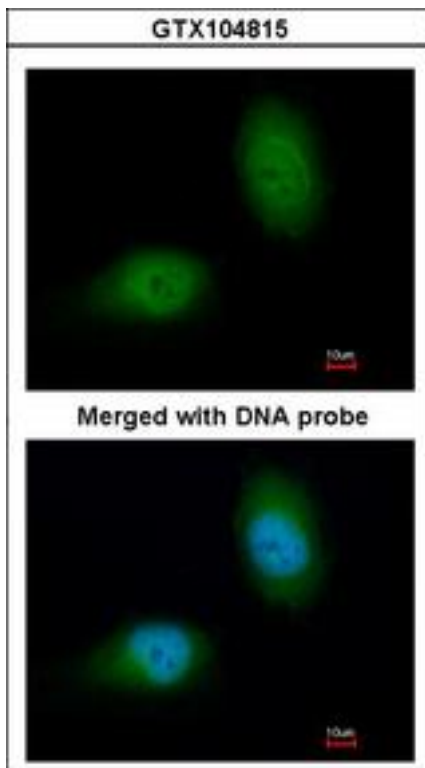
HSPB8 / H11 / HSP22 Rabbit anti-Human Polyclonal (aa134-196) Antibody - LS-B10221 - LSBio	
CatalogID:	LS-B10221
Validation:	This antibody replaces catalog number LS-C185659. It has been validated for use in the following assays: IHC-P.
Target:	heat shock 22kDa protein 8 (HSPB8)
Synonyms:	HSPB8 Antibody, Alpha-crystallin C chain Antibody, CMT2L Antibody, Crystallin alpha c Antibody, DHMN2 Antibody, E2-induced gene 1 protein Antibody, CRYAC Antibody, E2IG1 Antibody, HMN2 Antibody, H11 Antibody, Heat shock 27kDa protein 8 Antibody, Heat shock protein beta-8 Antibody, Heat shock 22kDa protein 8 Antibody, HMN2A Antibody, HSP22 Antibody, Protein kinase H11 Antibody
Family / Subfamily:	Protein Kinase / H11
Host	HSPB8 antibody was produced in Rabbit
Clonality:	Polyclonal
Isotype:	IgG
Immunogen Species:	HSPB8 / H11 / HSP22 antibody was raised against Human
Antigen Type:	Synthetic peptide
Immunogen:	HSPB8 / H11 / HSP22 antibody was raised against synthetic peptide corresponding to a region within amino acids 134 and 196 of HSP22 (SwissProt Q9UJY1). Percent identity by BLAST analysis: Human, Dog, Monkey (100%).
Specificity:	Human HSPB8 / H11 / HSP22
Epitope:	aa134-196
Reactivity:	Human
Purification:	Immunoaffinity purified
Presentation:	0.1 M Tris-glycine, pH 7.0, 10% glycerol, 0.01% Thimerosal
Recommended Storage:	Keep as concentrated solution. Aliquot and store at -20°C or below. Avoid multiple freeze-thaw cycles.
Usage Summary:	IHC-paraffin: Suggested antigen retrieval using heat mediated 10 mM Citrate buffer (pH 6.0) or Tris-EDTA buffer (pH 8.0).
Uses:	IHC - Paraffin (5 µg/ml), ICC (1:100 - 1:1000), Western blot (1:500 - 1:3000) (Optimal dilution to be determined by the researcher)
Size:	50 µl
Concentration:	1 mg/ml

Immunohistochemistry Image:



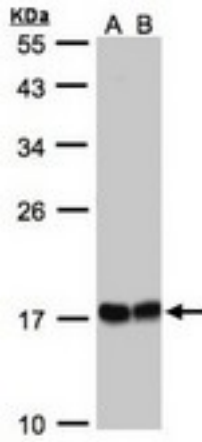
Human Skeletal Muscle: Formalin-Fixed, Paraffin-Embedded (FFPE)

Immunocytochemistry Image:



Immunofluorescence of paraformaldehyde-fixed HeLa using HSPB8 antibody at 1:200 dilution.

Western Blot Image:



Sample (30 ug whole cell lysate). A:293T whole cell lysate, B: A431. 12% SDS PAGE. HSPB8 / H11 / HSP22 antibody diluted at 1:1000

Requested From:

Japan

Laboratory Reagent For In Vitro Research Use Only

Not for resale without prior written consent from LifeSpan BioSciences, Inc.

Created on 9/23/2014

© 2014 LifeSpan BioSciences