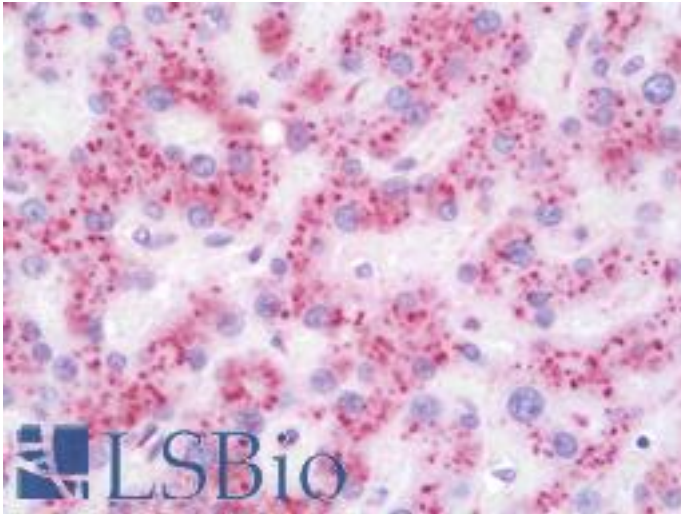


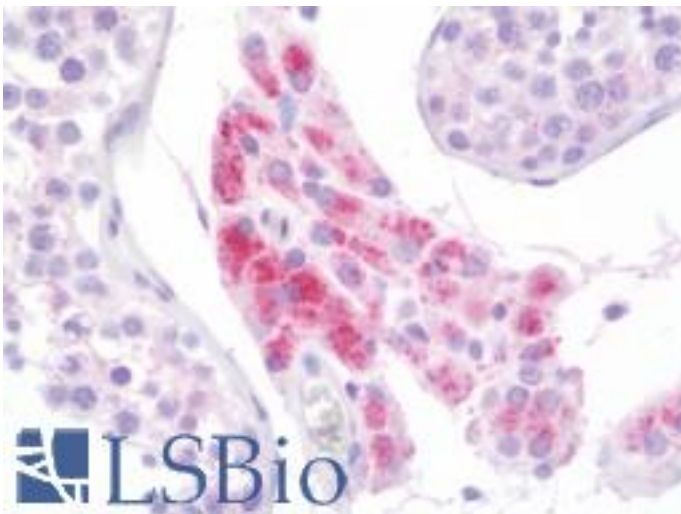
GLB1 / Beta-Galactosidase Mouse anti-Human Monoclonal (5H2) Antibody - LS-B10217 - LSBio	
CatalogID:	LS-B10217
Validation:	This antibody replaces catalog number LS-C174422. It has been validated for use in the following assays: IHC-P.
Target:	galactosidase, beta 1 (GLB1)
Synonyms:	GLB1 Antibody, Acid beta-galactosidase Antibody, Beta-galactosidase Antibody, Elastin receptor 1 Antibody, Elastin receptor 1 (67kD) Antibody, Elastin receptor 1, 67kDa Antibody, Galactosidase, beta 1 Antibody, ELNR1 Antibody, Lactase Antibody, MPS4B Antibody
Host	GLB1 antibody was produced in Mouse
Clonality:	Monoclonal
Isotype:	IgG1
Clone Name:	5H2
Immunogen Species:	GLB1 / Beta-Galactosidase antibody was raised against Human
Antigen Type:	Recombinant protein
Immunogen:	GLB1 / Beta-Galactosidase antibody was raised against full length human recombinant protein of human GLB1(NP_001073279) produced in HEK293T cell.
Specificity:	Human GLB1 / Beta-Galactosidase
Reactivity:	Human
Purification:	Protein A/G purified
Presentation:	PBS, pH 7.3, 1% BSA, 50% glycerol, 0.02% sodium azide
Recommended Storage:	Store at -20°C. Minimize freezing and thawing.
Uses:	IHC - Paraffin (10 µg/ml), Immunofluorescence (1:100), Western blot (1:1000), Flow Cytometry (1:100) (Optimal dilution to be determined by the researcher)
Size:	50 µl
Concentration:	1 mg/ml

Immunohistochemistry Image:



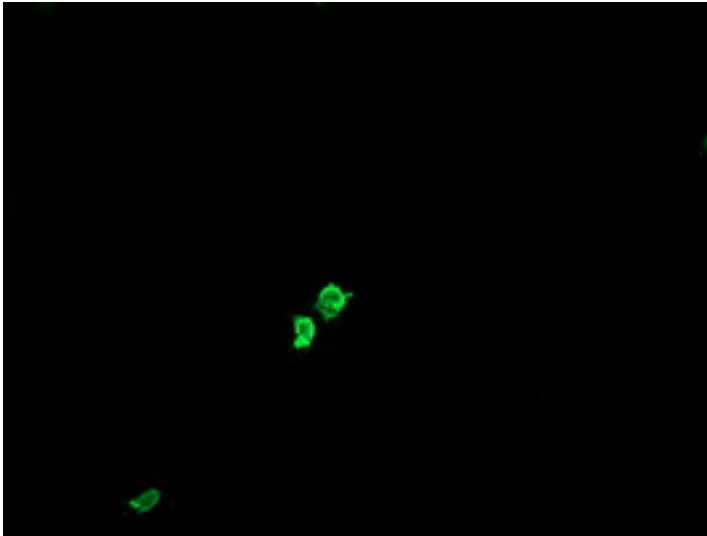
Human Liver: Formalin-Fixed, Paraffin-Embedded (FFPE)

Immunohistochemistry Image:



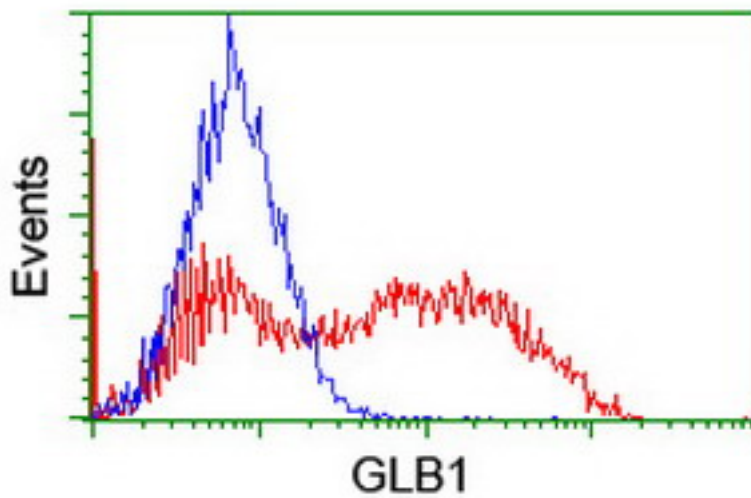
Human Testis: Formalin-Fixed, Paraffin-Embedded (FFPE)

Immunofluorescence Image:



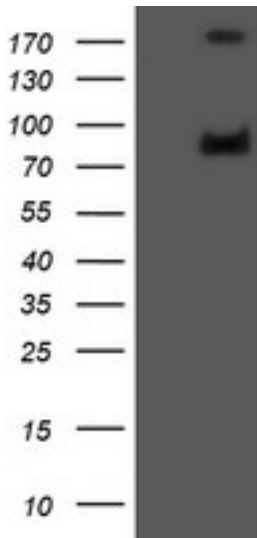
Anti-GLB1 mouse monoclonal antibody immunofluorescent staining of COS7 cells transiently transfected by pCMV6-ENTRY GLB1.

Flow Cytometry Image:



HEK293T cells transfected with either overexpress plasmid (Red) or empty vector control plasmid (Blue) were immunostained by anti-GLB1 antibody, and then analyzed by flow cytometry.

Western Blot Image:



HEK293T cells were transfected with the pCMV6-ENTRY control (Left lane) or pCMV6-ENTRY GLB1 (Right lane) cDNA for 48 hrs and lysed. Equivalent amounts of cell lysates (5 ug per lane) were separated by SDS-PAGE and immunoblotted with anti-GLB1.

Requested From:

Japan

Laboratory Reagent For In Vitro Research Use Only

Not for resale without prior written consent from LifeSpan BioSciences, Inc.

Created on 9/23/2014

© 2014 LifeSpan BioSciences