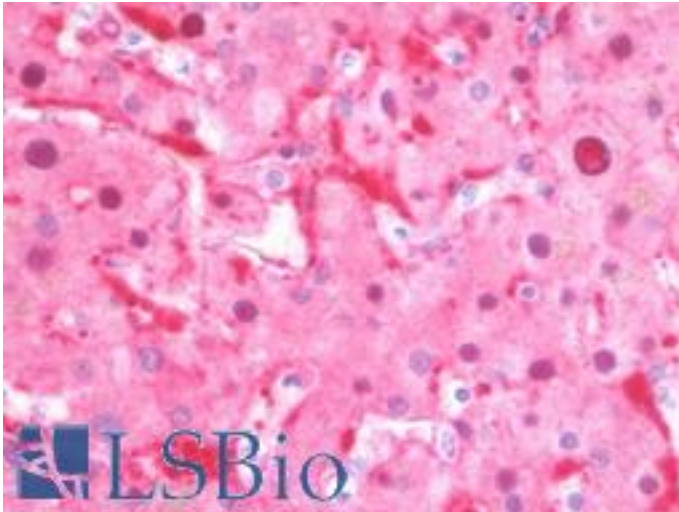


CTH Mouse anti-Human Monoclonal (2D6) Antibody - LS-B10215 - LSBio

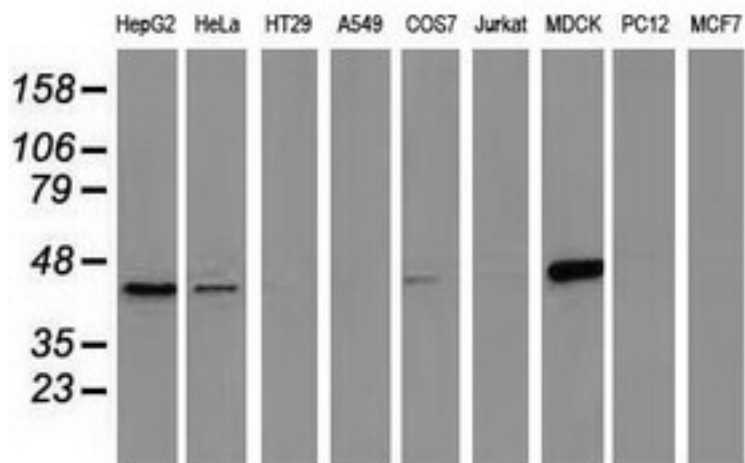
CatalogID:	LS-B10215
Validation:	This antibody replaces catalog number LS-C172687. It has been validated for use in the following assays: IHC-P.
Target:	cystathionase (cystathionine gamma-lyase) (CTH)
Synonyms:	CTH Antibody, Cysteine-protein sulfhydrase Antibody, Cysteine desulfhydrase Antibody, Cystathionine gamma-lyase Antibody, Homoserine dehydratase Antibody, Gamma-cystathionase Antibody, Homoserine deaminase Antibody
Host	CTH antibody was produced in Mouse
Clonality:	Monoclonal
Isotype:	IgG1
Clone Name:	2D6
Immunogen Species:	CTH antibody was raised against Human
Antigen Type:	Recombinant protein
Immunogen:	CTH antibody was raised against full length human recombinant protein of human CTH (NP_001893) produced in HEK293T cell.
Specificity:	Human CTH
Reactivity:	Human, Monkey, Dog
Purification:	Protein A/G purified
Presentation:	PBS, pH 7.3, 1% BSA, 50% glycerol, 0.02% sodium azide
Recommended Storage:	Store at -20°C. Minimize freezing and thawing.
Uses:	IHC - Paraffin (10 µg/ml), Western blot (1:200 - 1:500) (Optimal dilution to be determined by the researcher)
Size:	50 µl
Concentration:	0.9 mg/ml

Immunohistochemistry Image:



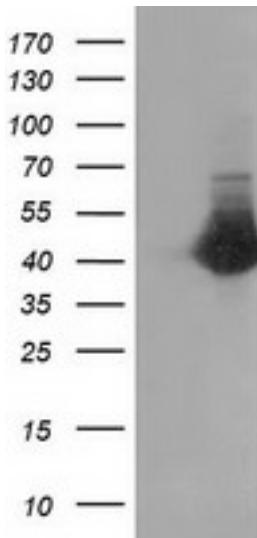
Human Liver: Formalin-Fixed, Paraffin-Embedded (FFPE)

Western Blot Image:



Western blot of extracts (35 ug) from 9 different cell lines by using anti-CTH monoclonal antibody (HepG2: human; HeLa: human; SVT2: mouse; A549: human; COS7: monkey; Jurkat: human; MDCK: canine; PC12: rat; MCF7: human).

Western Blot Image:



HEK293T cells were transfected with the pCMV6-ENTRY control (Left lane) or pCMV6-ENTRY CTH (Right lane) cDNA for 48 hrs and lysed. Equivalent amounts of cell lysates (5 ug per lane) were separated by SDS-PAGE and immunoblotted with anti-CTH.

Requested From:

Japan

Laboratory Reagent For In Vitro Research Use Only

Not for resale without prior written consent from LifeSpan BioSciences, Inc.

Created on 9/23/2014

© 2014 LifeSpan BioSciences