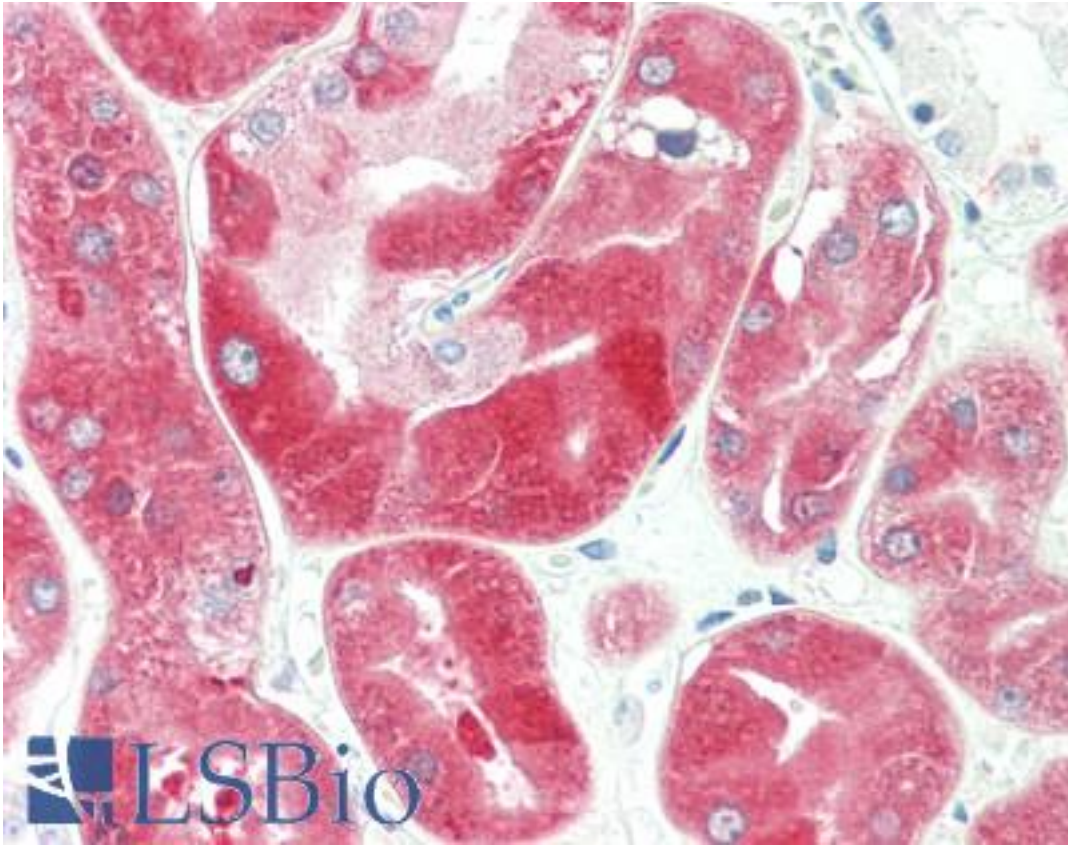


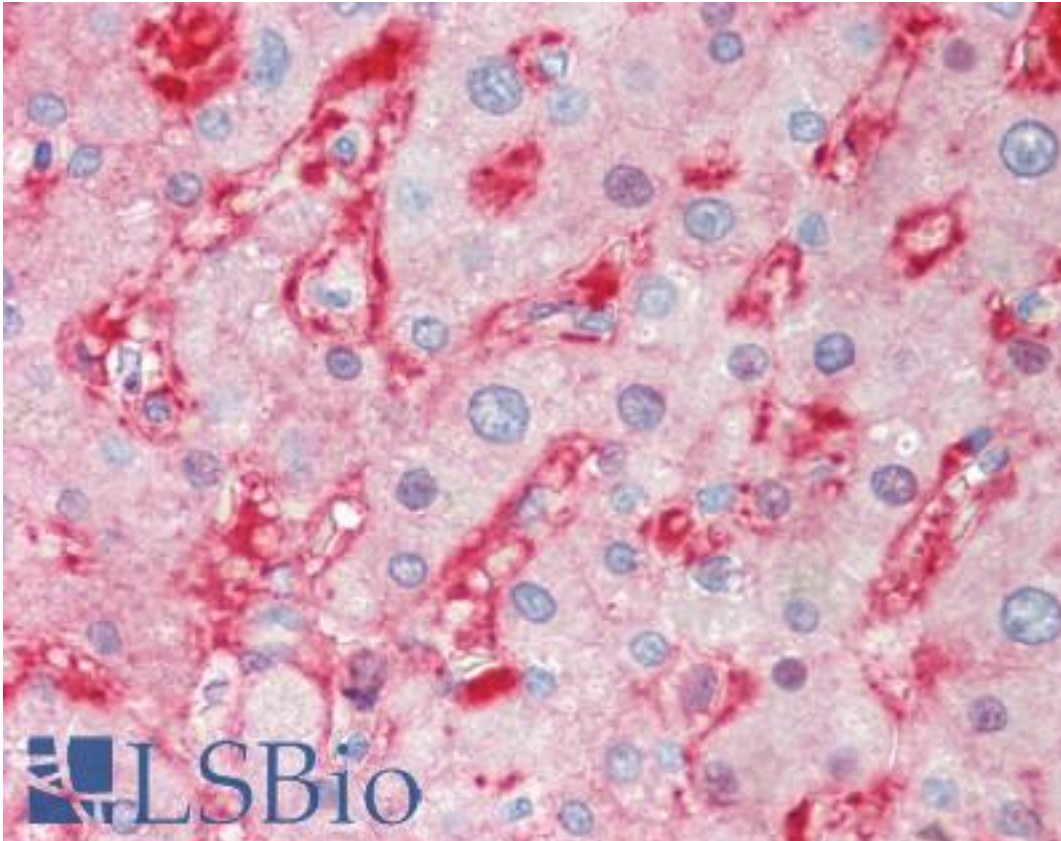
58K Golgi Protein / FTCD Mouse anti-Human Monoclonal (7C5) Antibody - LS-B10211 - LSBio	
CatalogID:	LS-B10211
Validation:	This antibody replaces catalog number LS-C174056. It has been validated for use in the following assays: IHC-P.
Target:	formimidoyltransferase cyclodeaminase (FTCD)
Synonyms:	FTCD Antibody, 58K Golgi Protein Antibody, LCHC1 Antibody
Host	FTCD antibody was produced in Mouse
Clonality:	Monoclonal
Isotype:	IgG1
Clone Name:	7C5
Immunogen Species:	58K Golgi Protein / FTCD antibody was raised against Human
Antigen Type:	Recombinant protein
Immunogen:	58K Golgi Protein / FTCD antibody was raised against full length human recombinant protein of human FTCD(NP_006648) produced in HEK293T cell.
Specificity:	Human 58K Golgi Protein / FTCD
Reactivity:	Human, Monkey
Purification:	Protein A/G purified
Presentation:	PBS, pH 7.3, 1% BSA, 50% glycerol, 0.02% sodium azide
Recommended Storage:	Store at -20°C. Minimize freezing and thawing.
Uses:	IHC - Paraffin (10 µg/ml), Western blot (1:500 - 1:2000), Flow Cytometry (1:100) (Optimal dilution to be determined by the researcher)
Size:	50 µl
Concentration:	1 mg/ml

Immunohistochemistry Image:



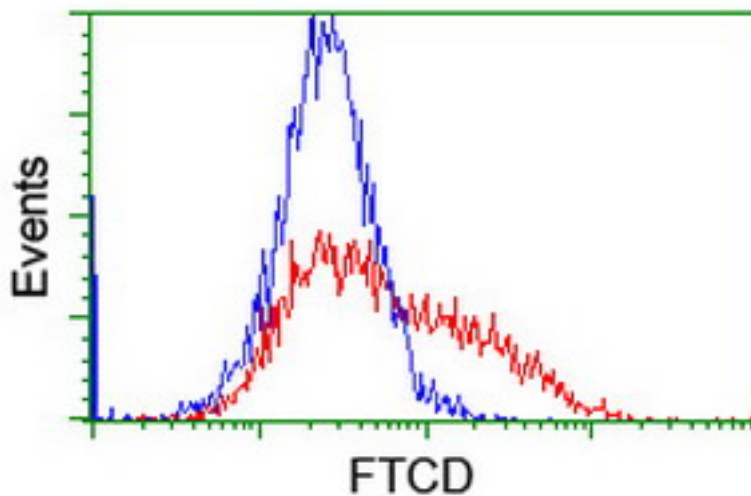
Human Kidney: Formalin-Fixed, Paraffin-Embedded (FFPE)

Immunohistochemistry Image:



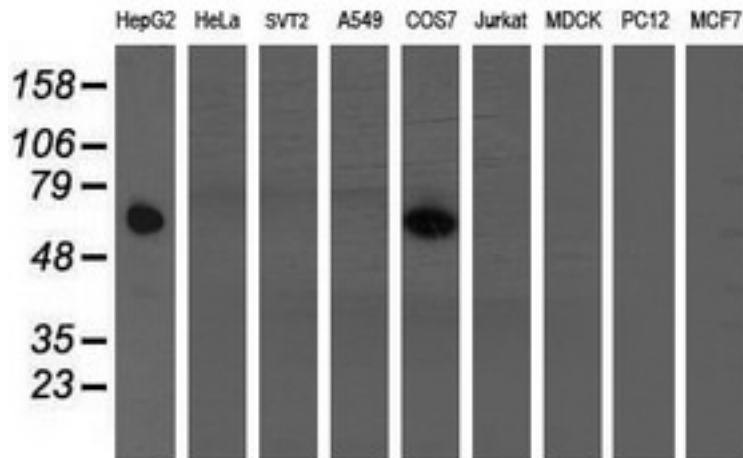
Human Liver: Formalin-Fixed, Paraffin-Embedded (FFPE)

Flow Cytometry Image:



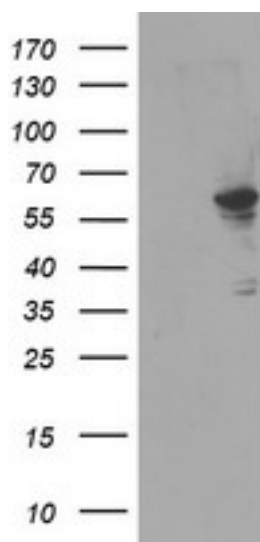
HEK293T cells transfected with either overexpress plasmid (Red) or empty vector control plasmid (Blue) were immunostained by anti-FTCD antibody, and then analyzed by flow cytometry.

Western Blot Image:



Western blot of extracts (35 ug) from 9 different cell lines by using anti-FTCD monoclonal antibody (HepG2: human; HeLa: human; SVT2: mouse; A549: human; COS7: monkey; Jurkat: human; MDCK: canine; PC12: rat; MCF7: human).

Western Blot Image:



HEK293T cells were transfected with the pCMV6-ENTRY control (Left lane) or pCMV6-ENTRY FTCD (Right lane) cDNA for 48 hrs and lysed. Equivalent amounts of cell lysates (5 ug per lane) were separated by SDS-PAGE and immunoblotted with anti-FTCD.

Requested From:

Japan

Laboratory Reagent For In Vitro Research Use Only

Not for resale without prior written consent from LifeSpan BioSciences, Inc.

Created on 9/23/2014

© 2014 LifeSpan BioSciences