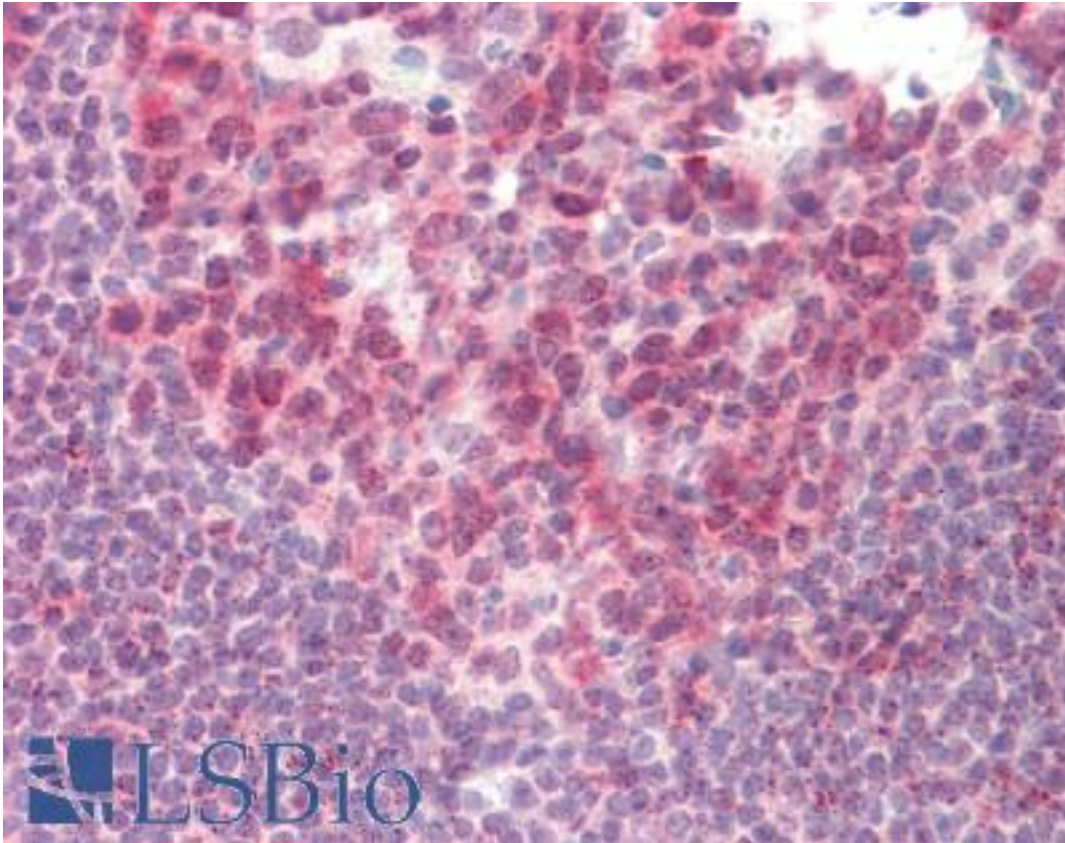


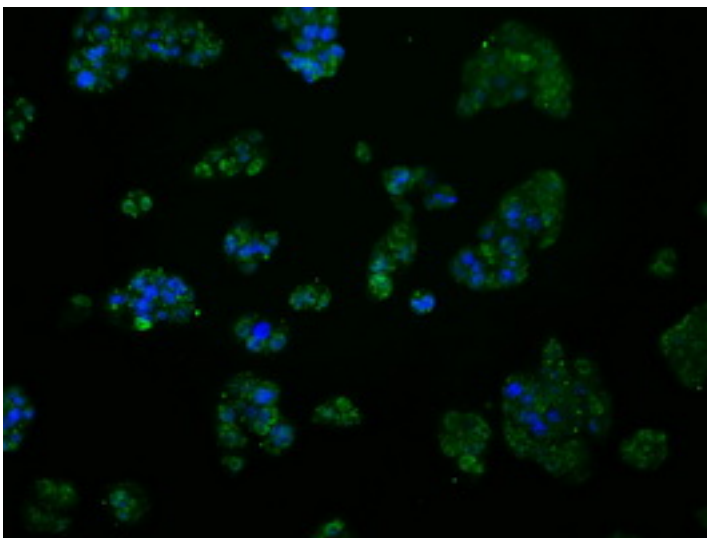
MCL1 / MCL 1 Mouse anti-Human Monoclonal (2E11) Antibody - LS-B10210 - LSBio	
CatalogID:	LS-B10210
Validation:	This antibody replaces catalog number LS-C115036. It has been validated for use in the following assays: IHC-P.
Target:	myeloid cell leukemia sequence 1 (BCL2-related) (MCL1)
Synonyms:	MCL1 Antibody, BCL2L3 Antibody, Bcl-2-like protein 3 Antibody, Bcl-2-related protein EAT/mcl1 Antibody, Bcl2-L-3 Antibody, MCL1S Antibody, MCL1L Antibody, Myeloid cell leukemia ES Antibody, MCL 1 Antibody, MCL1-ES Antibody, TM Antibody, EAT Antibody, Mcl-1 Antibody
Host	MCL1 antibody was produced in Mouse
Clonality:	Monoclonal
Isotype:	IgG2a
Clone Name:	2E11
Immunogen Species:	MCL1 / MCL 1 antibody was raised against Human
Antigen Type:	Recombinant protein
Immunogen:	MCL1 / MCL 1 antibody was raised against full length human recombinant protein of human MCL1 (NP_068779) produced in HEK293T cell.
Specificity:	Human MCL 1
Reactivity:	Human
Purification:	Protein A/G purified
Presentation:	PBS, pH 7.3, 1% BSA, 50% glycerol, 0.02% sodium azide
Recommended Storage:	Store at -20°C. Minimize freezing and thawing.
Usage Summary:	Concentration: 0.5-1.0 mg/ml (Lot dependent)
Uses:	IHC - Paraffin (1:50) & (10 µg/ml), Immunofluorescence (1:100), Western blot (1:2000), Flow Cytometry (1:100) (Optimal dilution to be determined by the researcher)
Size:	50 µl
Concentration:	0.89 mg/ml

Immunohistochemistry Image:



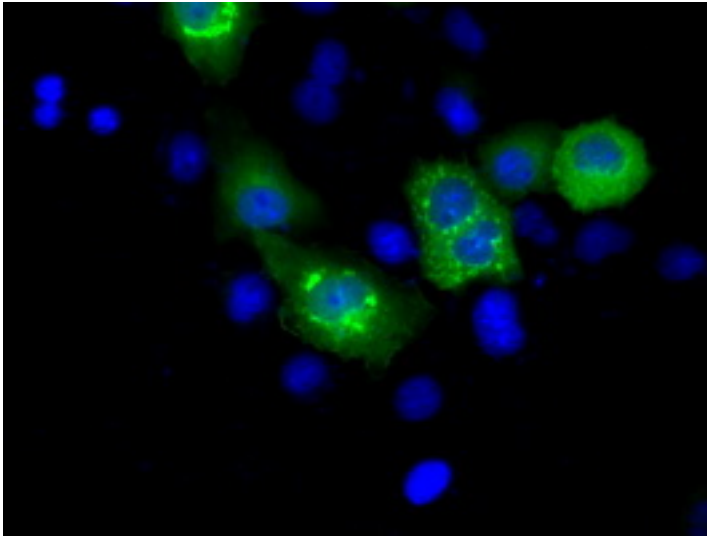
Human Tonsil: Formalin-Fixed, Paraffin-Embedded (FFPE)

Immunofluorescence Image:



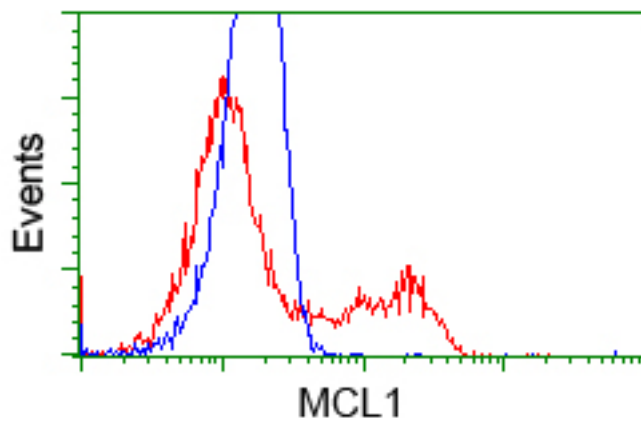
Immunofluorescent staining of HepG2 cells using anti-MCL1 mouse monoclonal antibody.

Immunofluorescence Image:



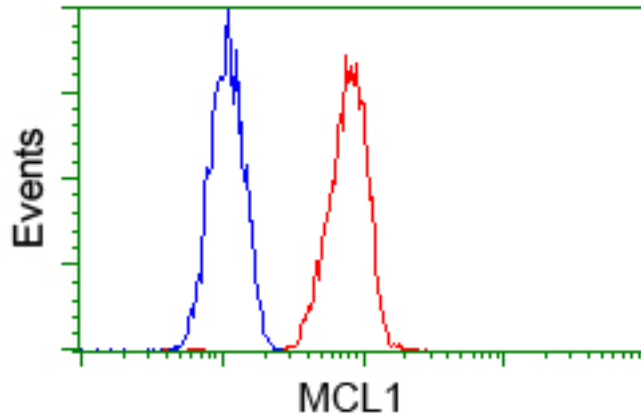
Anti-MCL1 mouse monoclonal antibody immunofluorescent staining of COS7 cells transiently transfected by pCMV6-ENTRY MCL1.

Flow Cytometry Image:



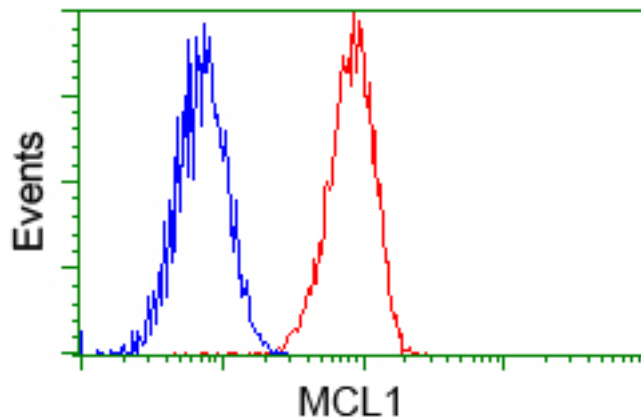
HEK293T cells transfected with either pCMV6-ENTRY MCL1 (Red) or empty vector control plasmid (Blue) were immunostained with anti-MCL1 mouse monoclonal, and then analyzed by flow cytometry.

Flow Cytometry Image:



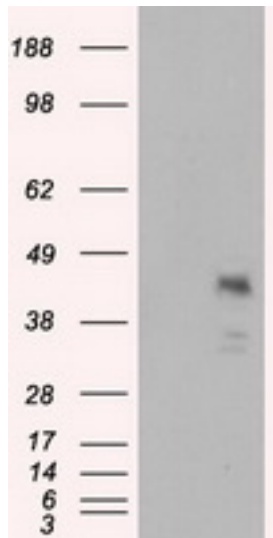
Flow cytometry of HeLa cells, using anti-MCL1 antibody, (Red) compared to a nonspecific negative control antibody (Blue).

Flow Cytometry Image:



Flow cytometry of Jurkat cells, using anti-MCL1 antibody, (Red) compared to a nonspecific negative control antibody (Blue).

Western Blot Image:



HEK293T cells were transfected with the pCMV6-ENTRY control (Left lane) or pCMV6-ENTRY MCL1 (Right lane) cDNA for 48 hrs and lysed. Equivalent amounts of cell lysates (5 ug per lane) were separated by SDS-PAGE and immunoblotted with anti-MCL1.

Requested From:

Japan

Laboratory Reagent For In Vitro Research Use Only

Not for resale without prior written consent from LifeSpan BioSciences, Inc.

Created on 9/23/2014

© 2014 LifeSpan BioSciences