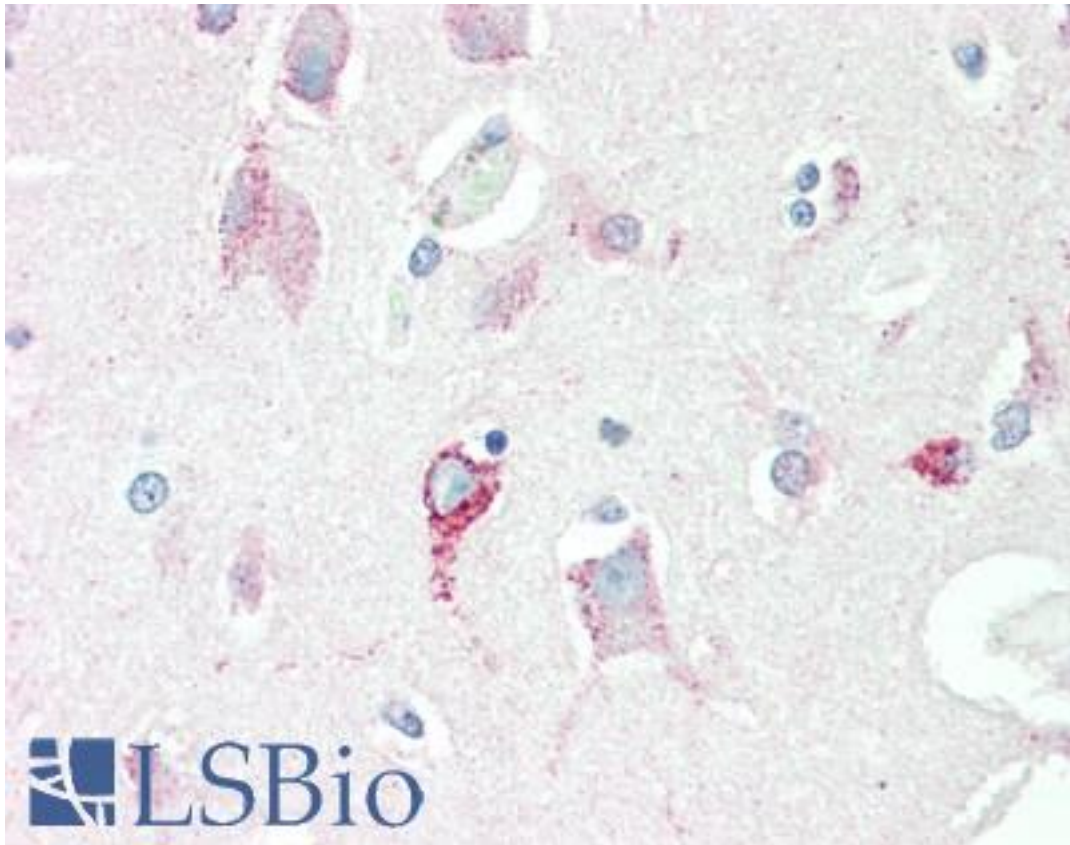


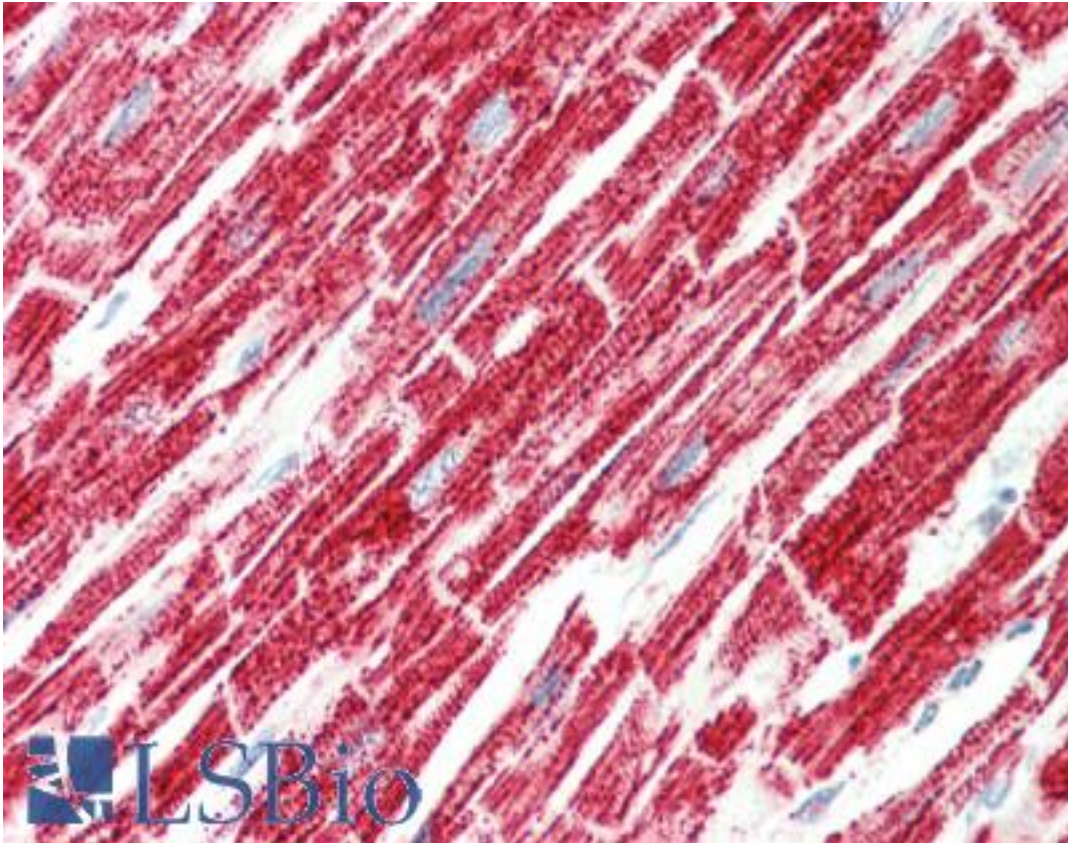
SRR / Serine Racemase Mouse anti-Human Monoclonal (9E8) Antibody - LS-B10209 - LSBio	
CatalogID:	LS-B10209
Validation:	This antibody replaces catalog number LS-C115004. It has been validated for use in the following assays: IHC-P.
Target:	serine racemase (SRR)
Synonyms:	SRR Antibody, D-serine dehydratase Antibody, ISO1 Antibody, L-serine ammonia-lyase Antibody, L-serine dehydratase Antibody, ILV1 Antibody, Serine racemase Antibody, D-serine ammonia-lyase Antibody
Host	SRR antibody was produced in Mouse
Clonality:	Monoclonal
Isotype:	IgG1
Clone Name:	9E8
Immunogen Species:	SRR / Serine Racemase antibody was raised against Human
Antigen Type:	Recombinant protein
Immunogen:	SRR / Serine Racemase antibody was raised against full length human recombinant protein of human SRR(NP_068766) produced in HEK293T cell.
Specificity:	Human SRR / Serine Racemase
Reactivity:	Human
Purification:	Protein A/G purified
Presentation:	PBS, pH 7.3, 1% BSA, 50% glycerol, 0.02% sodium azide
Recommended Storage:	Store at -20°C. Minimize freezing and thawing.
Usage Summary:	Concentration: 0.5-1.0 mg/ml (Lot dependent)
Uses:	IHC - Paraffin (1:50) & (10 µg/ml), Immunofluorescence (1:100), Western blot (1:2000), Flow Cytometry (1:100) (Optimal dilution to be determined by the researcher)
Size:	50 µl
Concentration:	0.86 mg/ml

Immunohistochemistry Image:



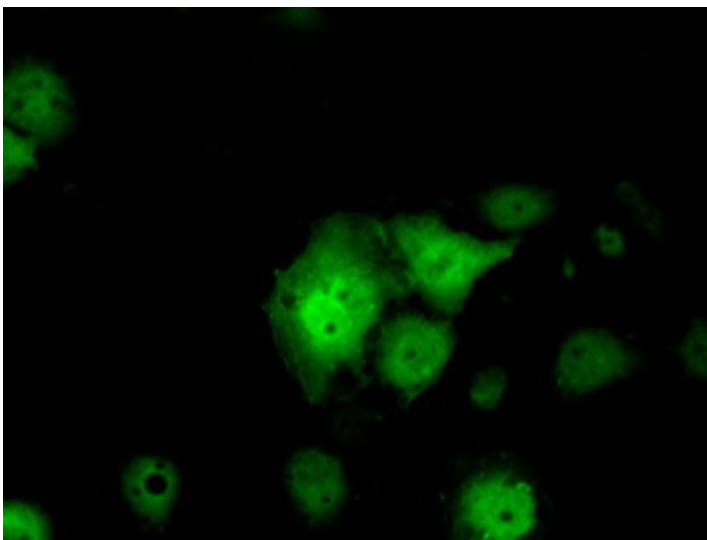
Human Brain, Cortex: Formalin-Fixed, Paraffin-Embedded (FFPE)

Immunohistochemistry Image:



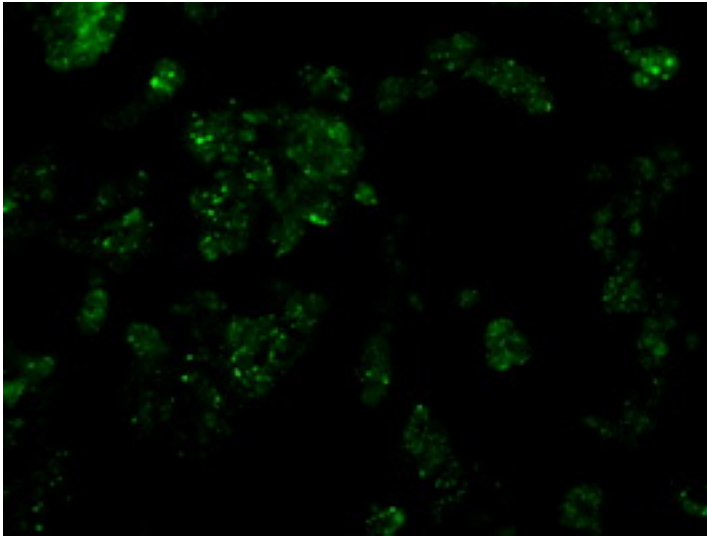
Human Heart: Formalin-Fixed, Paraffin-Embedded (FFPE)

Immunofluorescence Image:



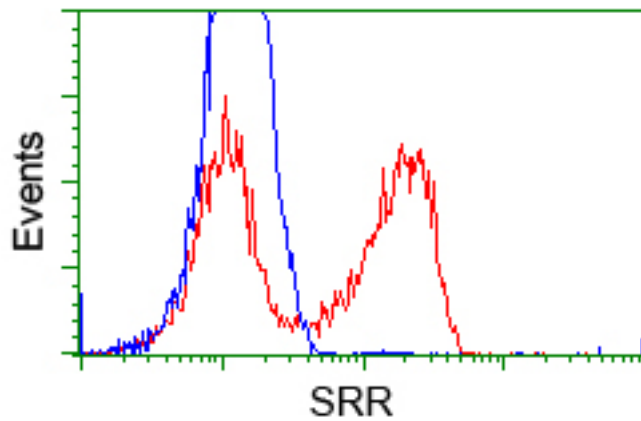
Anti-SRR mouse monoclonal antibody immunofluorescent staining of COS7 cells transiently transfected by pCMV6-ENTRY SRR.

Immunofluorescence Image:



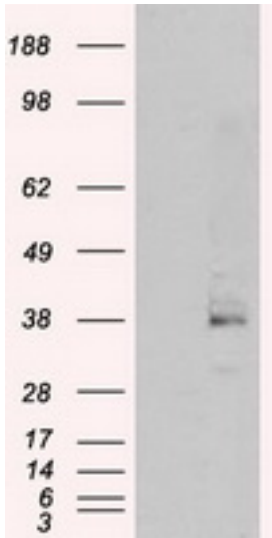
Immunofluorescent staining of HepG2 cells using anti-SRR mouse monoclonal antibody.

Flow Cytometry Image:



HEK293T cells transfected with either pCMV6-ENTRY SRR (Red) or empty vector control plasmid (Blue) were immunostained with anti-SRR mouse monoclonal, and then analyzed by flow cytometry.

Western Blot Image:



HEK293T cells were transfected with the pCMV6-ENTRY control (Left lane) or pCMV6-ENTRY SRR (Right lane) cDNA for 48 hrs and lysed. Equivalent amounts of cell lysates (5 ug per lane) were separated by SDS-PAGE and immunoblotted with anti-SRR.

Requested From:

Japan

Laboratory Reagent For In Vitro Research Use Only

Not for resale without prior written consent from LifeSpan BioSciences, Inc.

Created on 9/23/2014

© 2014 LifeSpan BioSciences