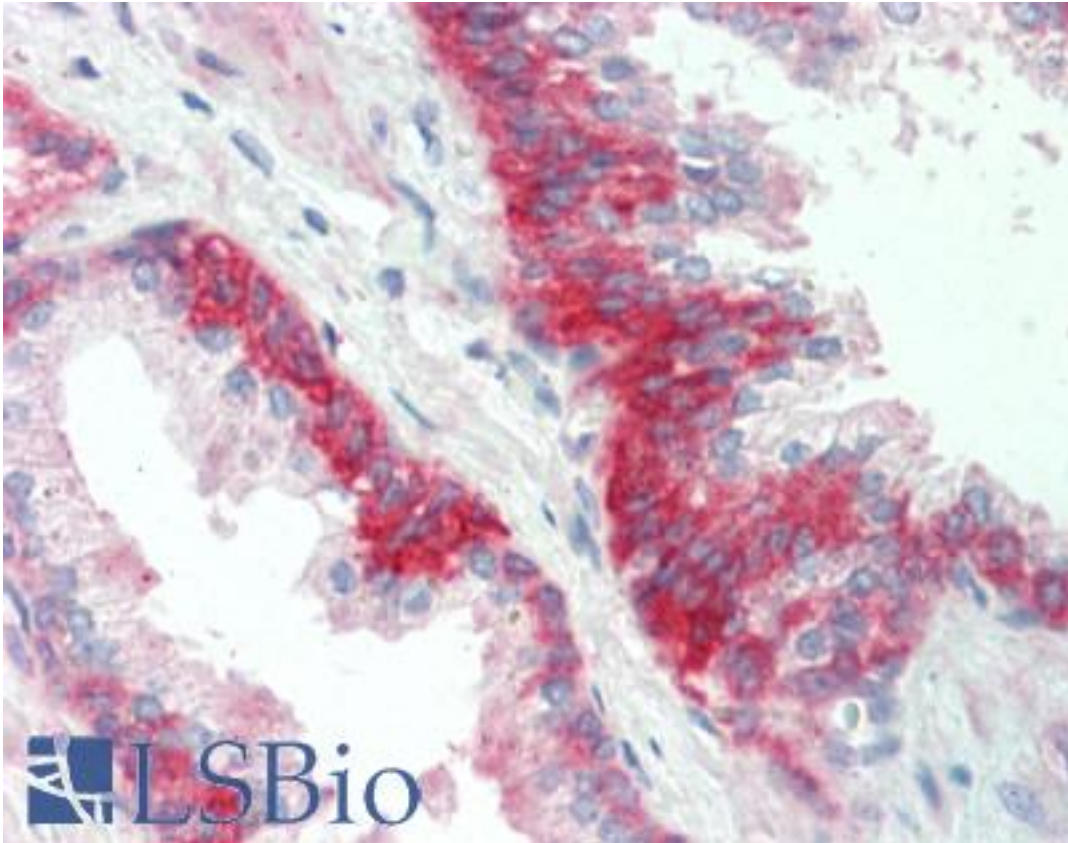


**SGPP1 Rabbit anti-Human Polyclonal (aa12-42) Antibody - LS-B10202 - LSBio**

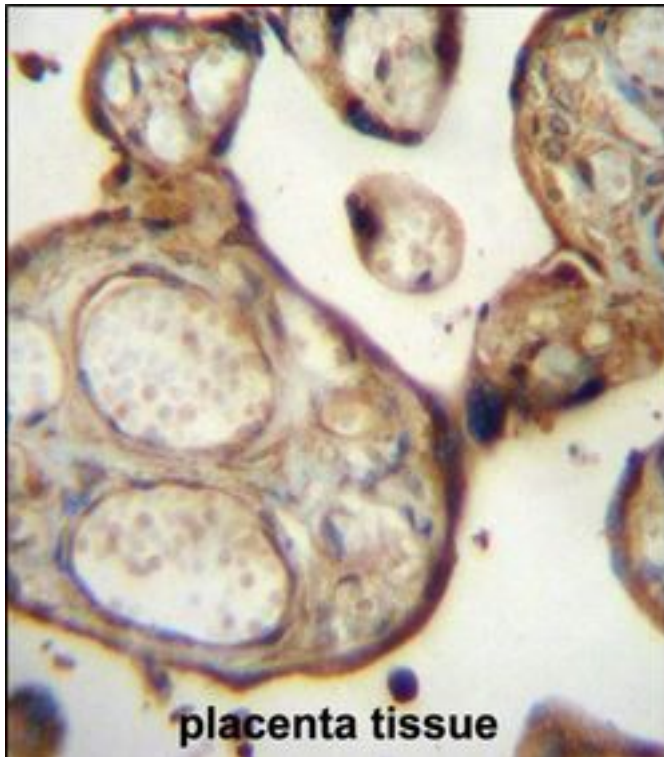
<b>CatalogID:</b>	LS-B10202
<b>Validation:</b>	This antibody replaces catalog number LS-C169048. It has been validated for use in the following assays: IHC-P.
<b>Target:</b>	sphingosine-1-phosphate phosphatase 1 (SGPP1)
<b>Synonyms:</b>	SGPP1 Antibody, HSPPase1 Antibody, HSPP1 Antibody, Sphingosine-1-phosphatase 1 Antibody, SPPase1 Antibody
<b>Family / Subfamily:</b>	Non-protein Phosphatase
<b>Host</b>	SGPP1 antibody was produced in Rabbit
<b>Clonality:</b>	Polyclonal
<b>Immunogen Species:</b>	SGPP1 antibody was raised against Human
<b>Antigen Type:</b>	Synthetic peptide
<b>Immunogen:</b>	SGPP1 antibody was raised against kLH-conjugated synthetic peptide from N-terminal region of human SGPP1.
<b>Specificity:</b>	Human SGPP1
<b>Epitope:</b>	aa12-42
<b>Reactivity:</b>	Human
<b>Purification:</b>	Immunoaffinity purified
<b>Presentation:</b>	PBS, 0.09% sodium azide
<b>Recommended Storage:</b>	Maintain refrigerated at 2-8°C for up to 6 months. For long term storage store at -20°C.
<b>Uses:</b>	IHC - Paraffin (1:10 - 1:100), Western blot (1:1000) (Optimal dilution to be determined by the researcher)
<b>Size:</b>	200 µl

**Immunohistochemistry Image:**



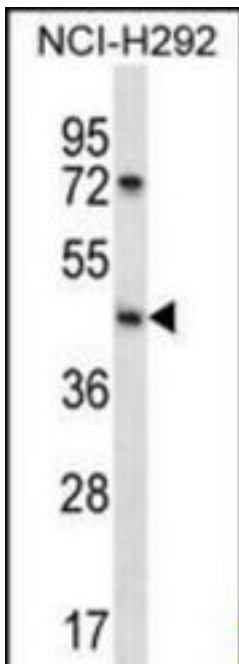
Human Prostate: Formalin-Fixed, Paraffin-Embedded (FFPE)

**Immunohistochemistry Image:**



SGPP1 Antibody (N-term) IHC of formalin fixed and paraffin embedded human placenta tissue followed by peroxidase conjugation of the secondary antibody and DAB staining. This demonstrates the use of SGPP1 Antibody (N-term) for immunohistochemistry.

**Western Blot Image:**



SGPP1 Antibody (N-term) Western blot of NCI-H292 cell line lysates (35 ug/lane). This demonstrates the SGPP1 antibody detected the SGPP1 protein (arrow).

Requested From:

Japan

Laboratory Reagent For In Vitro Research Use Only

Not for resale without prior written consent from LifeSpan BioSciences, Inc.

Created on 9/23/2014

© 2014 LifeSpan BioSciences