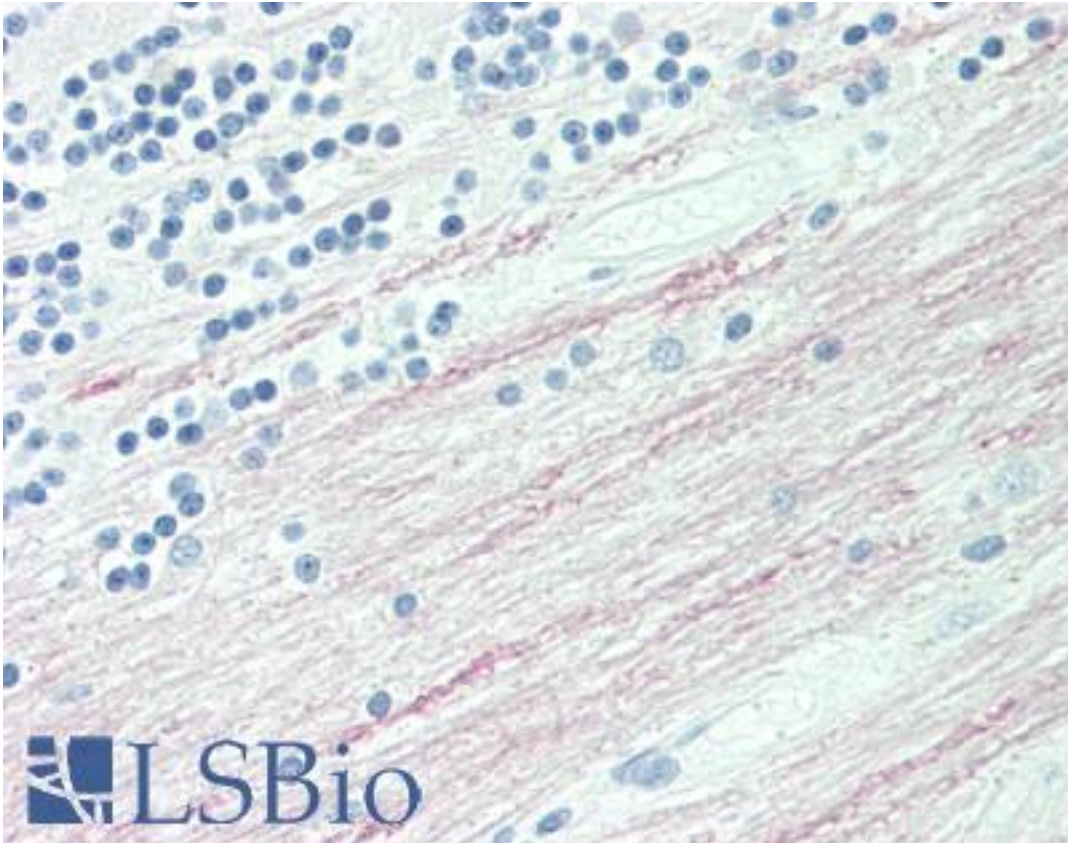


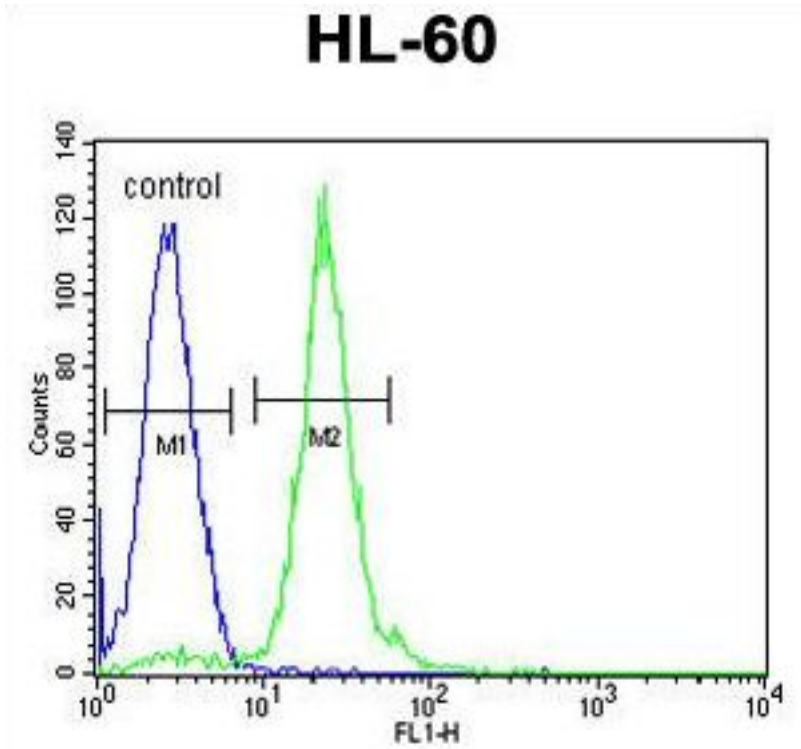
CPT1C Rabbit anti-Human Polyclonal (aa759-790) Antibody - LS-B10201 - LSBio	
CatalogID:	LS-B10201
Validation:	This antibody replaces catalog number LS-C167010. It has been validated for use in the following assays: IHC-P.
Target:	carnitine palmitoyltransferase 1C (CPT1C)
Synonyms:	CPT1C Antibody, CPT1-B Antibody, CATL1 Antibody, CPT IC Antibody, CPTI-B Antibody, CPTIC Antibody, CPT1P Antibody
Host	CPT1C antibody was produced in Rabbit
Clonality:	Polyclonal
Immunogen Species:	CPT1C antibody was raised against Human
Antigen Type:	Synthetic peptide
Immunogen:	CPT1C antibody was raised against kLH-conjugated synthetic peptide from C-terminal region of human CPT1C.
Specificity:	Human CPT1C
Epitope:	aa759-790
Reactivity:	Human
Purification:	Immunoaffinity purified
Presentation:	PBS, 0.09% sodium azide
Recommended Storage:	Maintain refrigerated at 2-8°C for up to 6 months. For long term storage store at -20°C.
Uses:	IHC - Paraffin (1:50), Western blot (1:1000), Flow Cytometry (1:10 - 1:50) (Optimal dilution to be determined by the researcher)
Size:	200 µl

Immunohistochemistry Image:



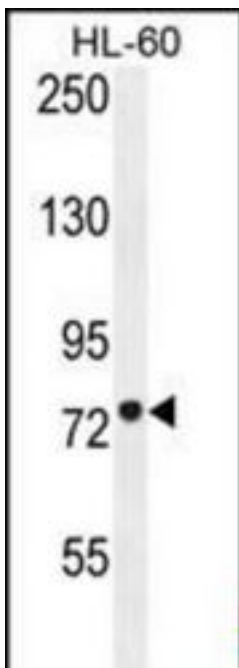
Human Brain, Cerebellum, White Matter: Formalin-Fixed, Paraffin-Embedded (FFPE)

Flow Cytometry Image:



CPT1C Antibody (C-term) flow cytometry of HL-60 cells (right histogram) compared to a negative control cell (left histogram). FITC-conjugated goat-anti-rabbit secondary antibodies were used for the analysis.

Western Blot Image:



CPT1C Antibody (C-term) Western blot of HL-60 cell line lysates (35 µg/lane). This demonstrates the CPT1C antibody detected the CPT1C protein (arrow).

Requested From:	Japan
Laboratory Reagent For In Vitro Research Use Only	
Not for resale without prior written consent from LifeSpan BioSciences, Inc.	
Created on 9/23/2014	
© 2014 LifeSpan BioSciences	