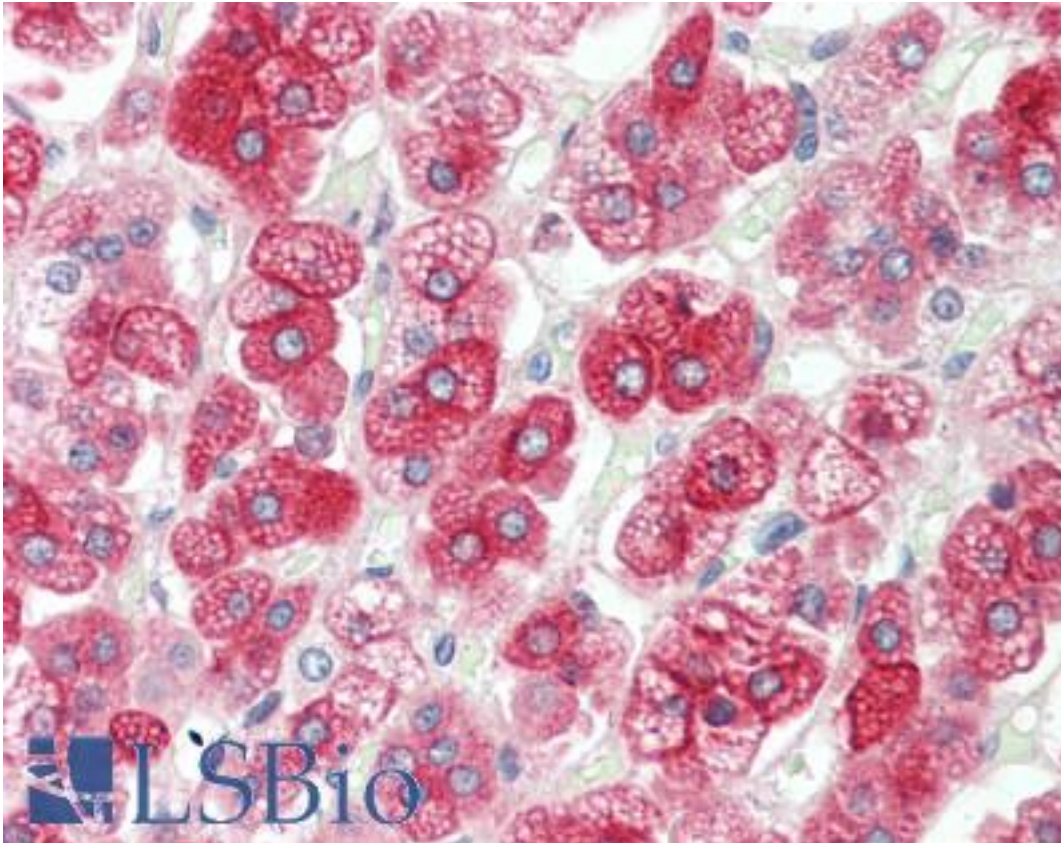


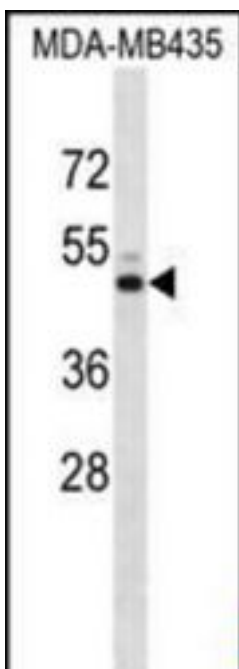
KCNJ13 / KIR7.1 Rabbit anti-Human Polyclonal (aa74-103) Antibody - LS-B10200 - LSBio	
CatalogID:	LS-B10200
Validation:	This antibody replaces catalog number LS-C165428. It has been validated for use in the following assays: IHC-P.
Target:	potassium inwardly-rectifying channel, subfamily J, member 13 (KCNJ13)
Synonyms:	KCNJ13 Antibody, KIR7.1 Antibody, LCA16 Antibody, SVD Antibody, KIR1.4 Antibody
Family / Subfamily:	Ion Channel / Potassium channel - inward-rectifying
Host	KCNJ13 antibody was produced in Rabbit
Clonality:	Polyclonal
Immunogen Species:	KCNJ13 / KIR7.1 antibody was raised against Human
Antigen Type:	Synthetic peptide
Immunogen:	KCNJ13 / KIR7.1 antibody was raised against kLH-conjugated synthetic peptide from N-terminal region of human KCNJ13.
Specificity:	Human KCNJ13
Epitope:	aa74-103
Reactivity:	Human
Purification:	Immunoaffinity purified
Presentation:	PBS, 0.09% sodium azide
Recommended Storage:	Maintain refrigerated at 2-8°C for up to 6 months. For long term storage store at -20°C.
Uses:	IHC - Paraffin (1:10 - 1:100), Western blot (1:1000) (Optimal dilution to be determined by the researcher)
Size:	200 µl

Immunohistochemistry Image:



Human Adrenal: Formalin-Fixed, Paraffin-Embedded (FFPE)

Western Blot Image:



KCNJ13 Antibody (N-term) Western blot of MDA-MB435 cell line lysates (35 ug/lane). This demonstrates the KCNJ13 antibody detected the KCNJ13 protein (arrow).

Requested From:	Japan
Laboratory Reagent For In Vitro Research Use Only	
Not for resale without prior written consent from LifeSpan BioSciences, Inc.	
Created on 9/23/2014	
© 2014 LifeSpan BioSciences	