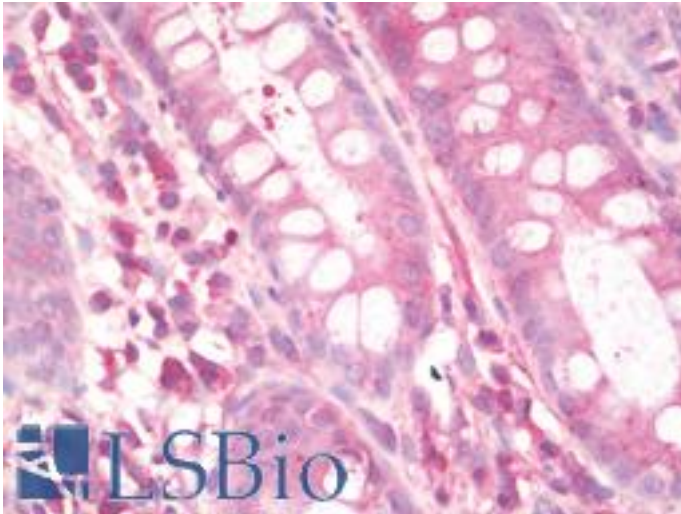


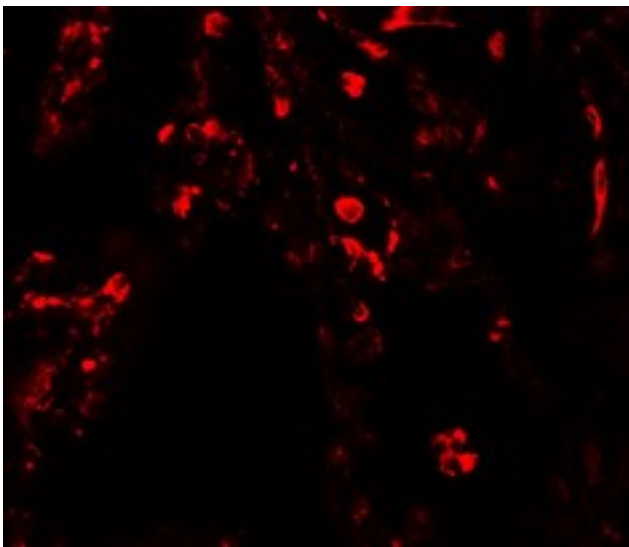
SUZ12 Rabbit anti-Human Polyclonal (Internal) Antibody - LS-B10186 - LSBio	
CatalogID:	LS-B10186
Validation:	This antibody replaces catalog number LS-C201194. It has been validated for use in the following assays: IHC-P.
Target:	SUZ12 polycomb repressive complex 2 subunit
Synonyms:	SUZ12 Antibody, ChET 9 protein Antibody, Joined to JAZF1 protein Antibody, CHET9 Antibody, JJAZ1 Antibody, KIAA0160 Antibody, Polycomb protein SUZ12 Antibody
Host	SUZ12 antibody was produced in Rabbit
Clonality:	Polyclonal
Isotype:	IgG
Immunogen Species:	SUZ12 antibody was raised against Human
Immunogen:	SUZ12 antibody was raised against 19 amino acid peptide near the center of human SUZ12.
Specificity:	SUZ12 antibody is human specific.
Epitope:	Internal
Reactivity:	Human
Purification:	Immunoaffinity purified
Presentation:	PBS, 0.02% sodium azide.
Recommended Storage:	Long term: -20°C; Short term: +4°C. Avoid repeat freeze-thaw cycles.
Uses:	IHC - Paraffin (10 µg/ml), Immunofluorescence (20 µg/ml), Western blot (1 - 2 µg/ml), ELISA (Optimal dilution to be determined by the researcher)
Size:	50 µg
Concentration:	1 mg/ml

Immunohistochemistry Image:



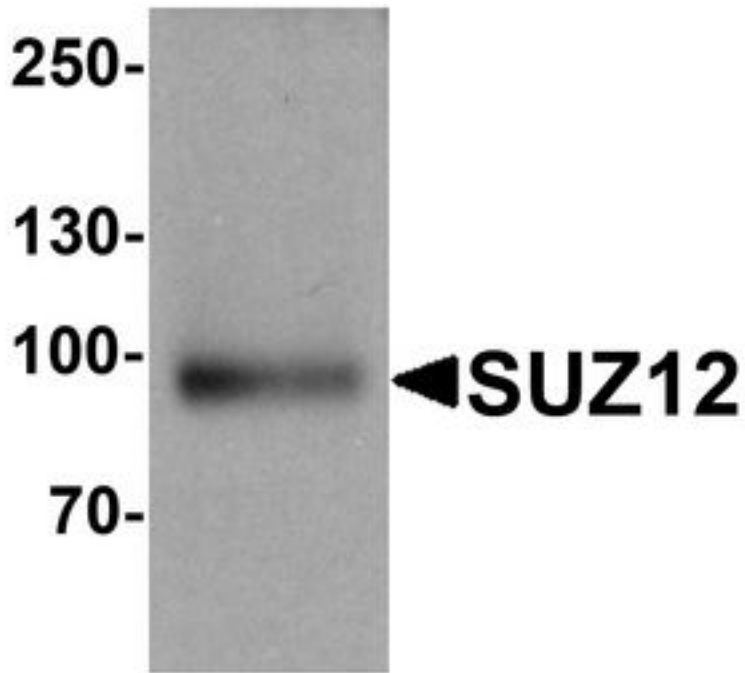
Human Colon: Formalin-Fixed, Paraffin-Embedded (FFPE)

Immunofluorescence Image:



Immunofluorescence of SUZ12 in human lung tissue with SUZ12 antibody at 20 $\mu\text{g}/\text{mL}$.

Western Blot Image:



Western blot analysis of SUZ12 in human liver tissue lysate with SUZ12 antibody at 1 ug/ml.

Requested From:

Japan

Laboratory Reagent For In Vitro Research Use Only

Not for resale without prior written consent from LifeSpan BioSciences, Inc.

Created on 9/23/2014

© 2014 LifeSpan BioSciences