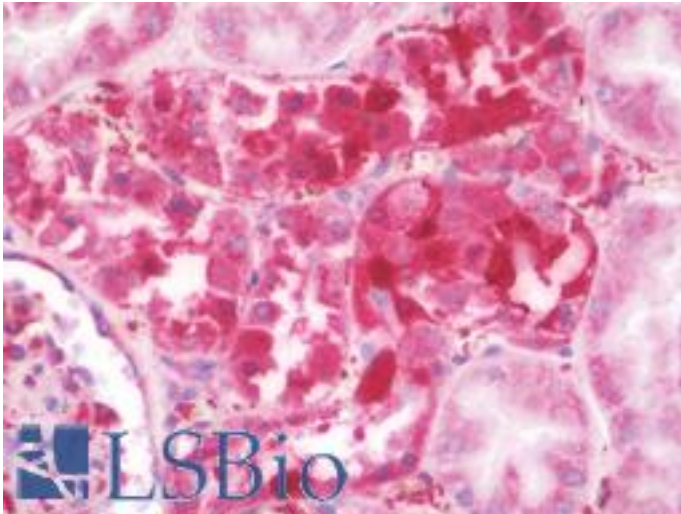


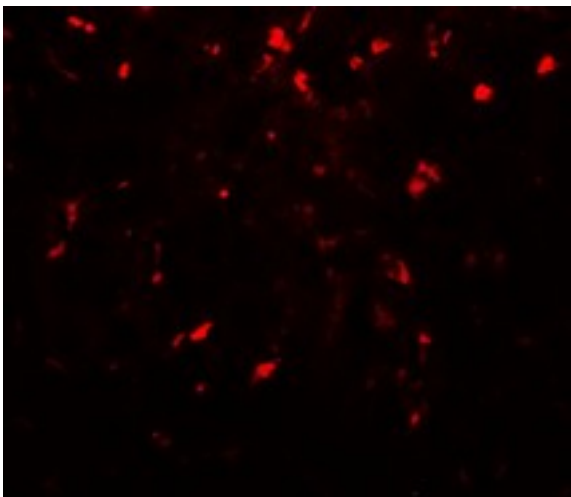
RPSA / Laminin Receptor Rabbit anti-Human Polyclonal (C-Terminus) Antibody - LS-B10178 - LSBio	
CatalogID:	LS-B10178
Validation:	This antibody replaces catalog number LS-C201166. It has been validated for use in the following assays: IHC-P.
Target:	ribosomal protein SA (RPSA)
Synonyms:	RPSA Antibody, 37 kDa laminin receptor Antibody, 37LRP Antibody, 40S ribosomal protein SA Antibody, 67LR Antibody, 67 kDa laminin receptor Antibody, 37/67 kDa laminin receptor Antibody, 67kD, ribosomal protein SA Antibody, LAMR1 Antibody, LAMBR Antibody, Laminin receptor 1 Antibody, LamR Antibody, NEM/1CHD4 Antibody, SA Antibody, LRP/LR Antibody, Laminin binding protein Antibody, Laminin Receptor Antibody, LRP Antibody, p40 Antibody, Ribosomal protein SA Antibody
Family / Subfamily:	Laminin / not assigned-Laminin
Host	RPSA antibody was produced in Rabbit
Clonality:	Polyclonal
Isotype:	IgG
Immunogen Species:	RPSA / Laminin Receptor antibody was raised against Human
Immunogen:	RPSA / Laminin Receptor antibody was raised against 17 amino acid peptide near the carboxy terminus of human RPSA.
Specificity:	RPSA antibody is human, mouse and rat reactive.
Epitope:	C-Terminus
Reactivity:	Human, Mouse
Purification:	Immunoaffinity purified
Presentation:	PBS, 0.02% sodium azide.
Recommended Storage:	Long term: -20°C; Short term: +4°C. Avoid repeat freeze-thaw cycles.
Uses:	IHC - Paraffin (10 µg/ml), Immunofluorescence (20 µg/ml), Western blot (1 - 2 µg/ml), ELISA (Optimal dilution to be determined by the researcher)
Size:	50 µg
Concentration:	1 mg/ml

Immunohistochemistry Image:



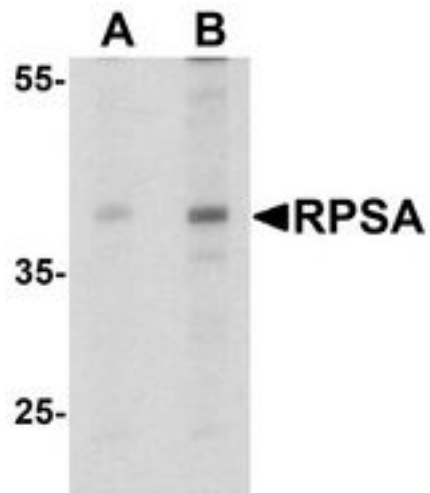
Human Kidney: Formalin-Fixed, Paraffin-Embedded (FFPE)

Immunofluorescence Image:



Immunofluorescence of RPSA in mouse liver tissue with RPSA antibody at 20 $\mu\text{g/mL}$.

Western Blot Image:



Western blot analysis of RPSA in HepG2 cell lysate with RPSA antibody at (A) 1 and (B) 2 ug/ml.

Requested From:

Japan

Laboratory Reagent For In Vitro Research Use Only

Not for resale without prior written consent from LifeSpan BioSciences, Inc.

Created on 9/23/2014

© 2014 LifeSpan BioSciences