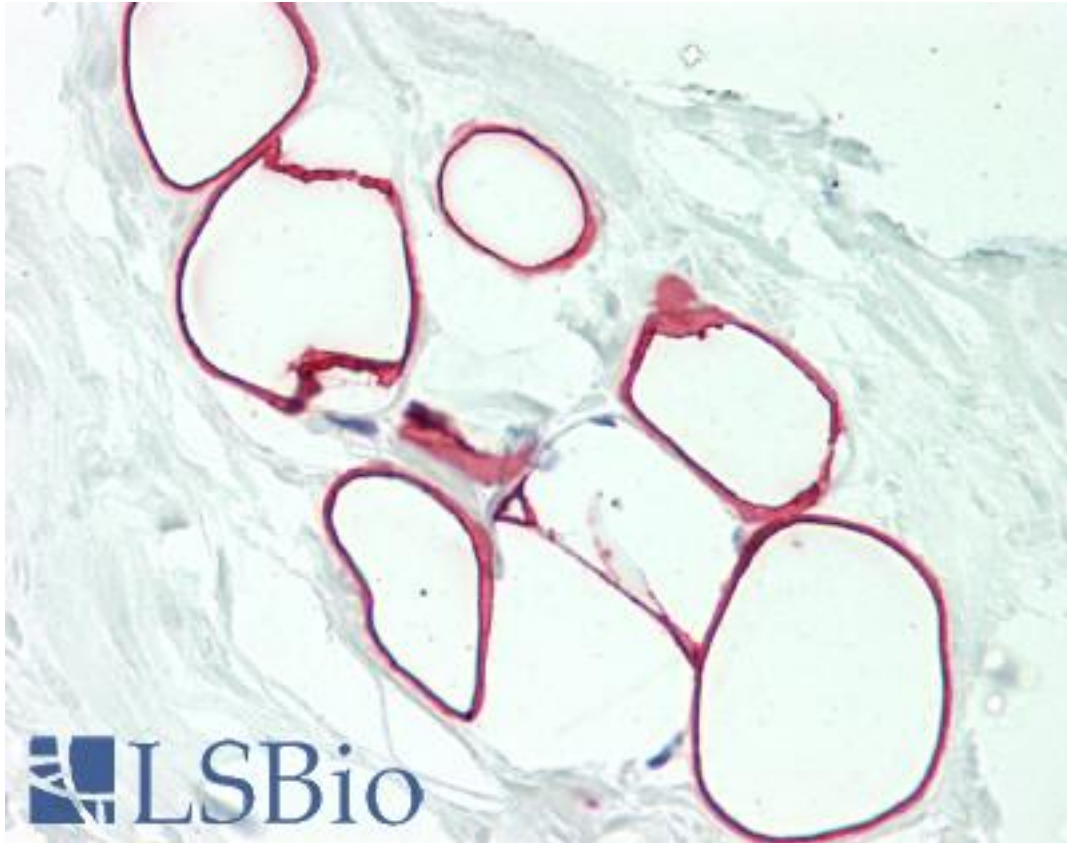


SLC25A6 / ANT3 Rabbit anti-Human Polyclonal (aa135-163) Antibody - LS-B10174 - LSBio

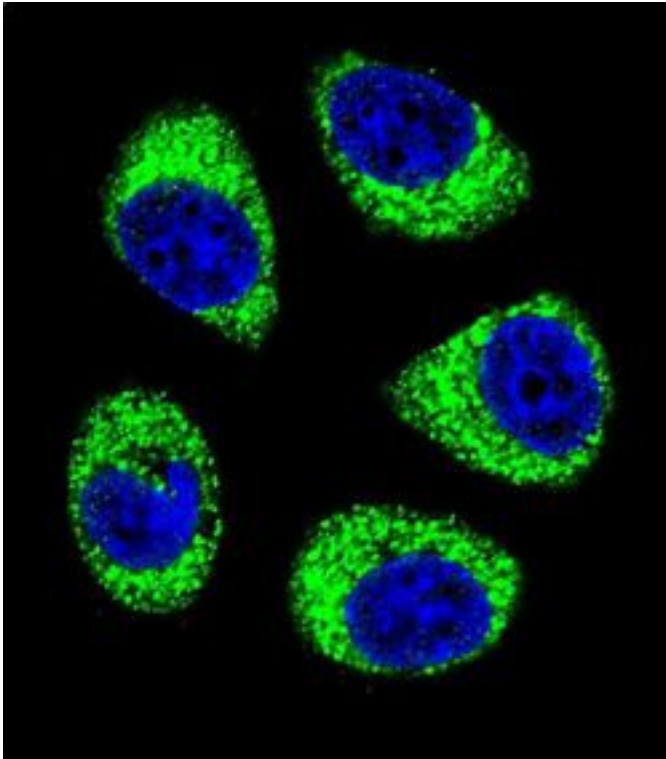
CatalogID:	LS-B10174
Validation:	This antibody replaces catalog number LS-C161197. It has been validated for use in the following assays: IHC-P.
Target:	solute carrier family 25 (mitochondrial carrier; adenine nucleotide translocator), member 6 (SLC25A6)
Synonyms:	SLC25A6 Antibody, ADP,ATP carrier protein Antibody, ADP,ATP carrier protein 3 Antibody, ADP,ATP carrier protein, liver Antibody, ANT 2 Antibody, ANT 3 Antibody, AAC3 Antibody, ADP/ATP translocase 3 Antibody, ADP/ATP translocator of liver Antibody, ANT3 Antibody, ANT3Y Antibody
Family / Subfamily:	Transporter / Mitochondrial carrier
Host	SLC25A6 antibody was produced in Rabbit
Clonality:	Polyclonal
Immunogen Species:	SLC25A6 / ANT3 antibody was raised against Human
Antigen Type:	Synthetic peptide
Immunogen:	SLC25A6 / ANT3 antibody was raised against KLH-conjugated synthetic peptide from internal region of human SLC25A6.
Specificity:	Human SLC25A6 / ANT3
Epitope:	aa135-163
Reactivity:	Human
Purification:	Immunoaffinity purified
Presentation:	PBS, 0.09% sodium azide
Recommended Storage:	Maintain refrigerated at 2-8°C for up to 6 months. For long term storage store at -20°C.
Uses:	IHC - Paraffin (1:10 - 1:100), Immunofluorescence (1:10 - 1:50), Western blot (1:1000), Flow Cytometry (1:10 - 1:50) (Optimal dilution to be determined by the researcher)
Size:	200 µl

Immunohistochemistry Image:



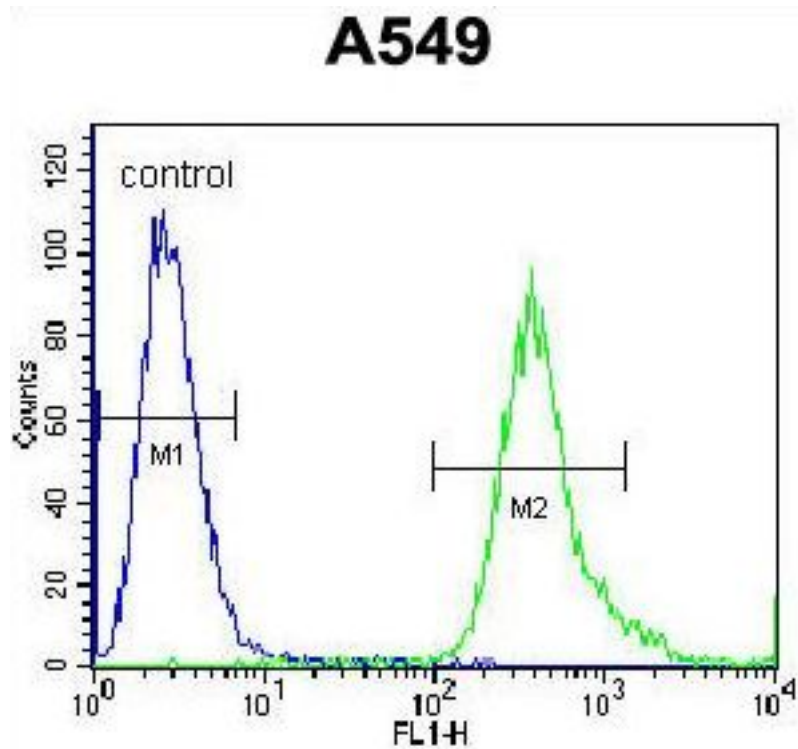
Human Adipose Tissue: Formalin-Fixed, Paraffin-Embedded (FFPE)

Immunofluorescence Image:



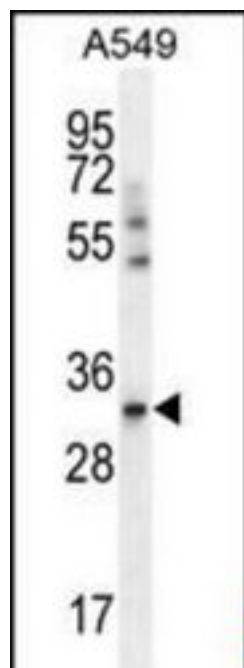
Confocal immunofluorescence of SLC25A6 Antibody (Center)with A549 cell followed by Alexa Fluor 488-conjugated goat anti-rabbit IgG (green). DAPI was used to stain the cell nuclear (blue).

Flow Cytometry Image:



SLC25A6 Antibody (Center) flow cytometry of A549 cells (right histogram) compared to a negative control cell (left histogram). FITC-conjugated goat-anti-rabbit secondary antibodies were used for the analysis.

Western Blot Image:



SLC25A6 Antibody (Center) Western blot of A549 cell line lysates (35 ug/lane). This demonstrates the SLC25A6 antibody detected the SLC25A6 protein (arrow).

Requested From:	Japan
Laboratory Reagent For In Vitro Research Use Only	
Not for resale without prior written consent from LifeSpan BioSciences, Inc.	
Created on 9/23/2014	
© 2014 LifeSpan BioSciences	