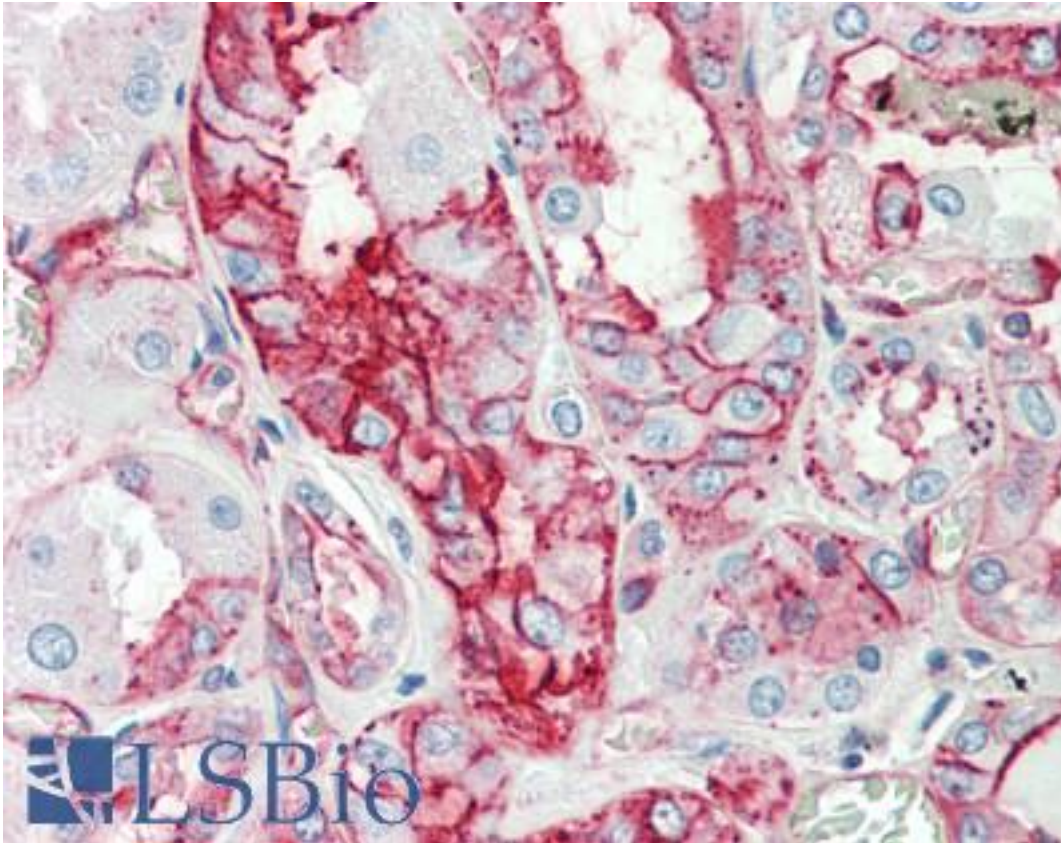


ANXA2 / Annexin A2 Rabbit anti-Human Polyclonal (aa121-141) Antibody - LS-B10159 - LSBio

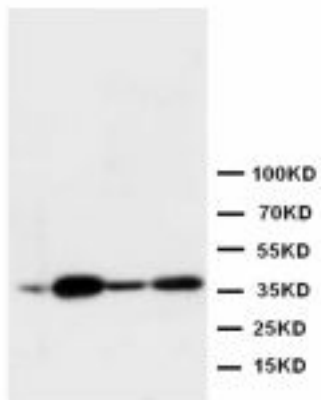
CatalogID:	LS-B10159
Validation:	This antibody replaces catalog number LS-C172198. It has been validated for use in the following assays: IHC-P.
Target:	annexin A2 (ANXA2)
Synonyms:	ANXA2 Antibody, Annexin A2 Antibody, Annexin-2 Antibody, ANX2 Antibody, Calpactin I heavy chain Antibody, Chromobindin-8 Antibody, CAL1H Antibody, Calpactin I heavy polypeptide Antibody, Chromobindin 8 Antibody, LPC2 Antibody, LIP2 Antibody, Lipocortin II Antibody, p36 Antibody, LPC2D Antibody, PAP-IV Antibody, Protein I Antibody, Annexin II Antibody, ANX2L4 Antibody, Calpactin-1 heavy chain Antibody
Family / Subfamily:	Annexin
Host	ANXA2 antibody was produced in Rabbit
Clonality:	Polyclonal
Immunogen Species:	ANXA2 / Annexin A2 antibody was raised against Human
Antigen Type:	Synthetic peptide
Immunogen:	ANXA2 / Annexin A2 antibody was raised against synthetic peptide corresponding to a sequence at the middle region of human Annexin A2 (121-141 aa), different from the mouse sequence by one amino acid.
Specificity:	Human, rat, mouse No cross reactivity with other proteins.
Epitope:	aa121-141
Reactivity:	Human, Mouse, Rat
Purification:	Immunoaffinity purified
Presentation:	5 mg BSA, 0.9 mg sodium chloride, 0.2 mg sodium phosphate, 0.05 mg Thimerosal, 0.05 mg sodium azide
Recommended Storage:	Short term +4°C; Long term -20°C
Uses:	IHC - Paraffin (5 µg/ml), IHC - Frozen, Western blot (Optimal dilution to be determined by the researcher)
Size:	50 µg
Concentration:	1 mg/ml

Immunohistochemistry Image:



Human Kidney: Formalin-Fixed, Paraffin-Embedded (FFPE)

Western Blot Image:



Lane 1 : Rat brain tissue Lysate
Lane 2 : Rat lung tissue Lysate
Lane 3 : Rat Testicular tissue Lysate
Lane 4 : Rat skeletal muscle tissue Lysate

Requested From:

Japan

Laboratory Reagent For In Vitro Research Use Only

Not for resale without prior written consent from LifeSpan BioSciences, Inc.

Created on 9/23/2014

© 2014 LifeSpan BioSciences