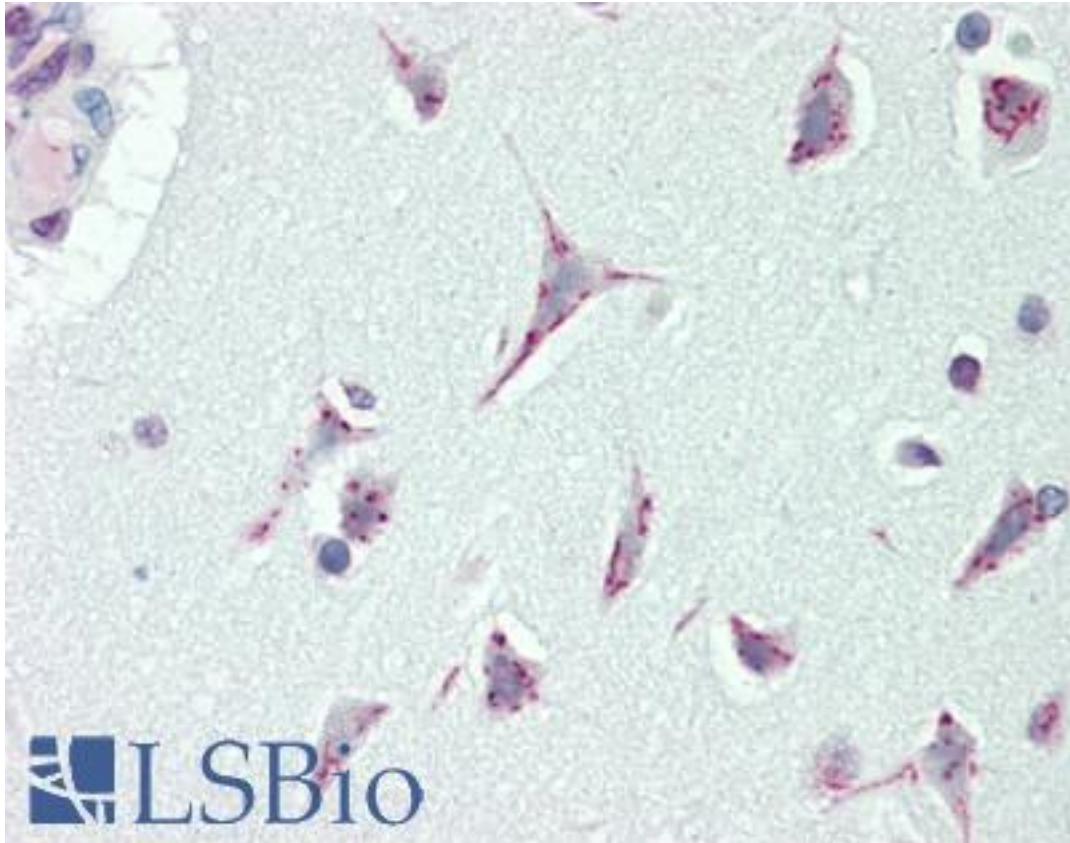


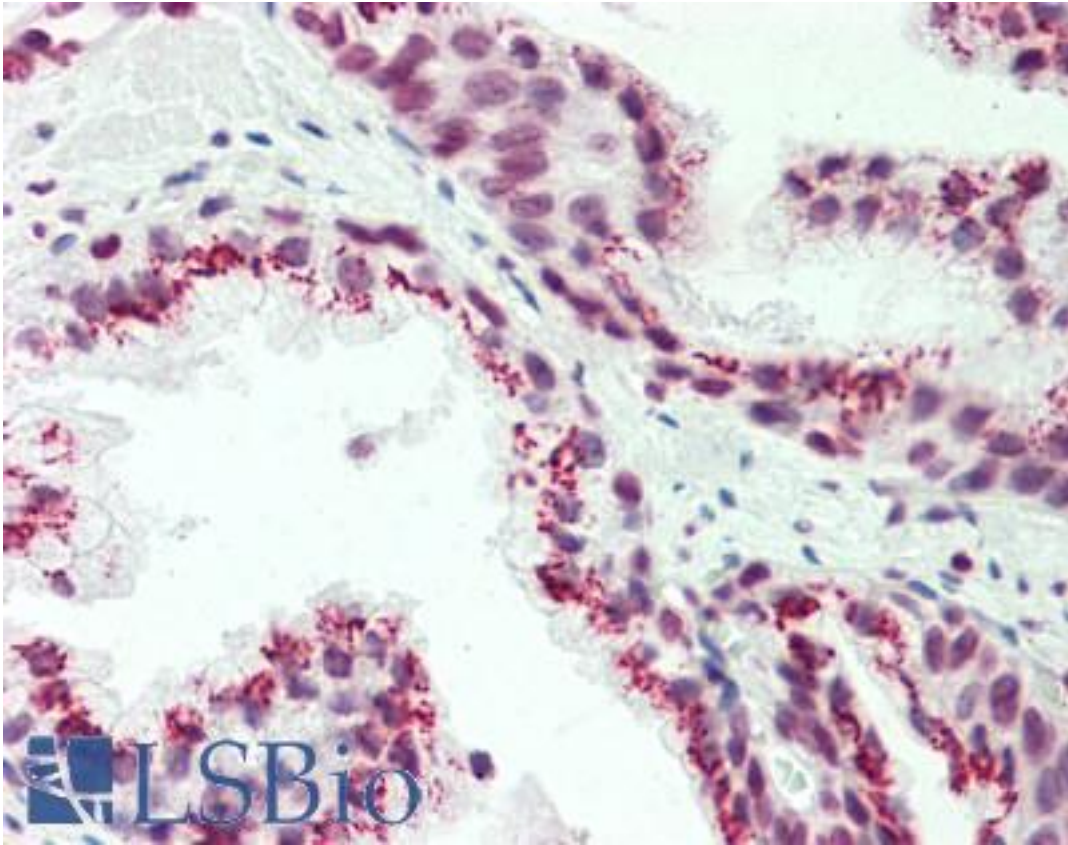
CASC4 Rabbit anti-Human Polyclonal (aa343-373) Antibody - LS-B10156 - LSBio	
CatalogID:	LS-B10156
Validation:	This antibody replaces catalog number LS-C168320. It has been validated for use in the following assays: IHC-P.
Target:	Cancer Susceptibility Candidate 4 (CASC4)
Synonyms:	CASC4 Antibody, H63 Antibody, Protein CASC4 Antibody
Host	CASC4 antibody was produced in Rabbit
Clonality:	Polyclonal
Immunogen Species:	CASC4 antibody was raised against Human
Antigen Type:	Synthetic peptide
Immunogen:	CASC4 antibody was raised against kLH-conjugated synthetic peptide from C-terminal region of human CASC4.
Specificity:	Human CASC4
Epitope:	aa343-373
Reactivity:	Human, Mouse
Purification:	Immunoaffinity purified
Presentation:	PBS, 0.09% sodium azide
Recommended Storage:	Maintain refrigerated at 2-8°C for up to 6 months. For long term storage store at -20°C.
Uses:	IHC - Paraffin (1:100), Western blot (1:1000), Flow Cytometry (1:10 - 1:50) (Optimal dilution to be determined by the researcher)
Size:	200 µl

Immunohistochemistry Image:



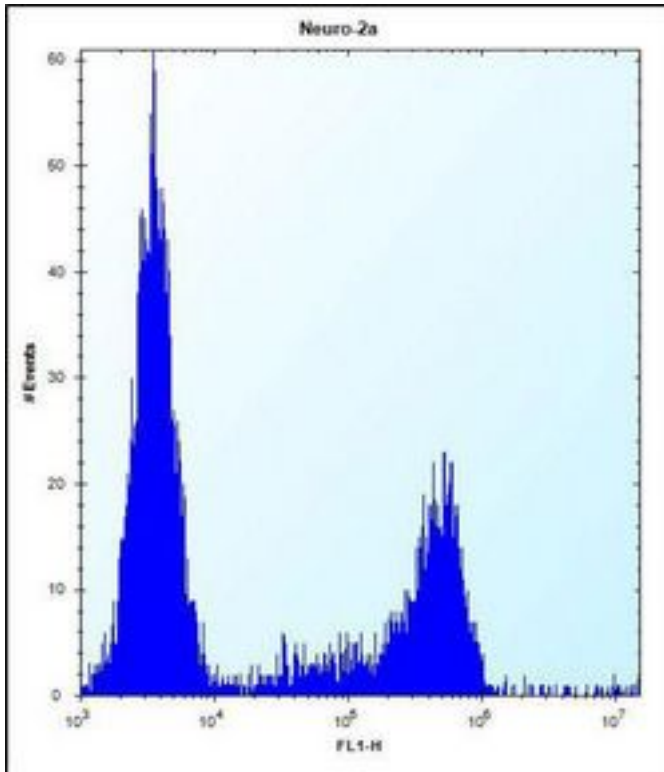
Human Brain, Cortex: Formalin-Fixed, Paraffin-Embedded (FFPE)

Immunohistochemistry Image:



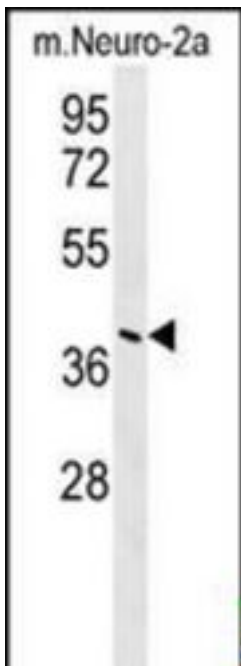
Human Prostate: Formalin-Fixed, Paraffin-Embedded (FFPE)

Flow Cytometry Image:



CASC4 Antibody (C-term) flow cytometry of Neuro-2a cells (right histogram) compared to a negative control cell (left histogram). FITC-conjugated donkey-anti-rabbit secondary antibodies were used for the analysis.

Western Blot Image:



CASC4 Antibody (C-term) Western blot of mouse Neuro-2a cell line lysates (35 ug/lane). This demonstrates the CASC4 antibody detected the CASC4 protein (arrow).

Requested From:	Japan
Laboratory Reagent For In Vitro Research Use Only	
Not for resale without prior written consent from LifeSpan BioSciences, Inc.	
Created on 9/23/2014	
© 2014 LifeSpan BioSciences	