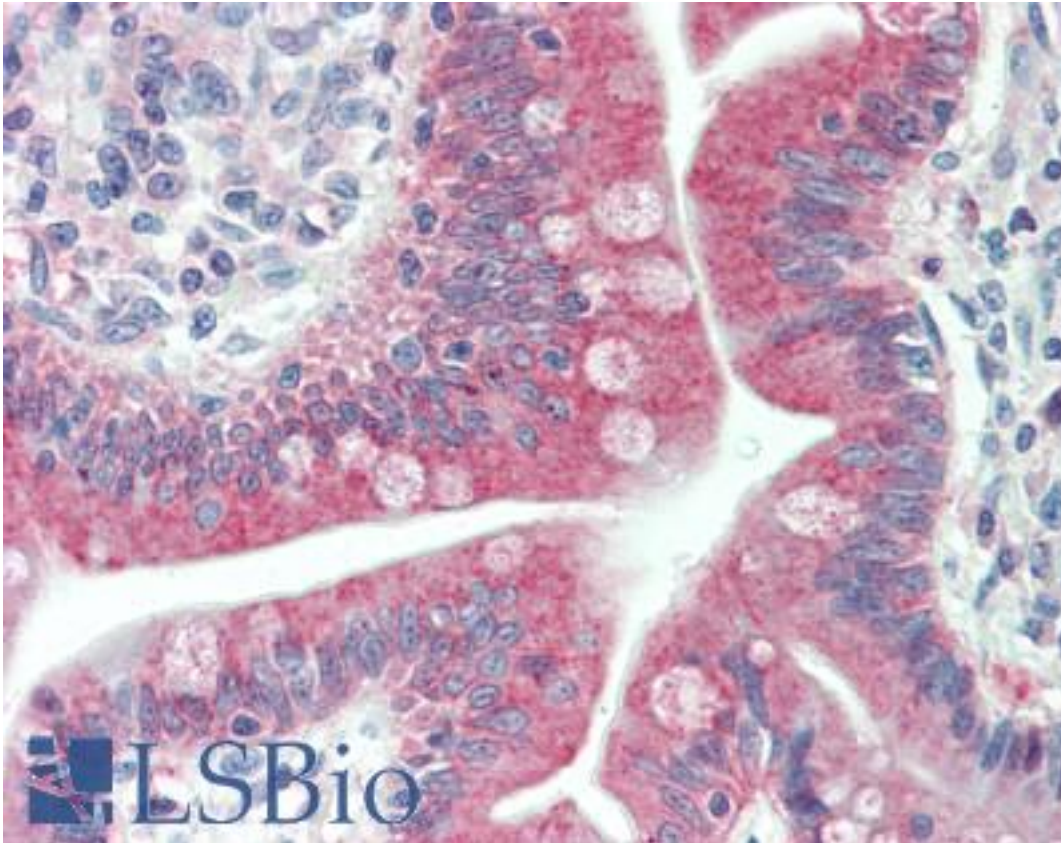


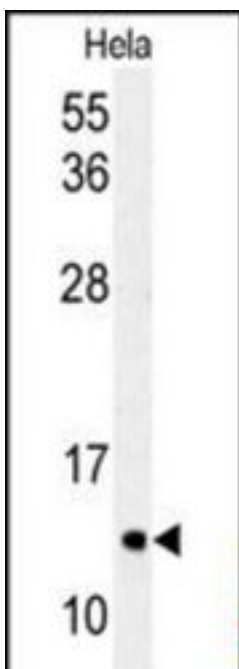
MAP1LC3C / LC3C Rabbit anti-Human Polyclonal (aa35-64) Antibody - LS-B10155 - LSBio	
<b>CatalogID:</b>	LS-B10155
<b>Validation:</b>	This antibody replaces catalog number LS-C165709. It has been validated for use in the following assays: IHC-P.
<b>Target:</b>	microtubule-associated protein 1 light chain 3 gamma (MAP1LC3C)
<b>Synonyms:</b>	MAP1LC3C Antibody, ATG8J Antibody, LC3C Antibody, MAP1A/MAP1B LC3 C Antibody, MAP1A/MAP1B light chain 3 C Antibody, LC3-like protein 2 Antibody
<b>Host</b>	MAP1LC3C antibody was produced in Rabbit
<b>Clonality:</b>	Polyclonal
<b>Immunogen Species:</b>	MAP1LC3C / LC3C antibody was raised against Human
<b>Antigen Type:</b>	Synthetic peptide
<b>Immunogen:</b>	MAP1LC3C / LC3C antibody was raised against kLH-conjugated synthetic peptide surrounding T48 of human MAP1LC3C.
<b>Specificity:</b>	Human LC3C / MAP1LC3C
<b>Epitope:</b>	aa35-64
<b>Reactivity:</b>	Human
<b>Purification:</b>	Immunoaffinity purified
<b>Presentation:</b>	PBS, 0.09% sodium azide
<b>Recommended Storage:</b>	Maintain refrigerated at 2-8°C for up to 6 months. For long term storage store at -20°C.
<b>Uses:</b>	IHC - Paraffin (1:100), Western blot (1:1000) (Optimal dilution to be determined by the researcher)
<b>Size:</b>	200 µl

**Immunohistochemistry Image:**



Human Small Intestine: Formalin-Fixed, Paraffin-Embedded (FFPE)

**Western Blot Image:**



Western blot of APG8c (MAP1LC3C) Antibody (T48) in HeLa cell line lysates (35 ug/lane). MAP1LC3C (arrow) was detected using the purified Pab.

<b>Requested From:</b>	Japan
Laboratory Reagent For In Vitro Research Use Only	
Not for resale without prior written consent from LifeSpan BioSciences, Inc.	
Created on 9/23/2014	
© 2014 LifeSpan BioSciences	