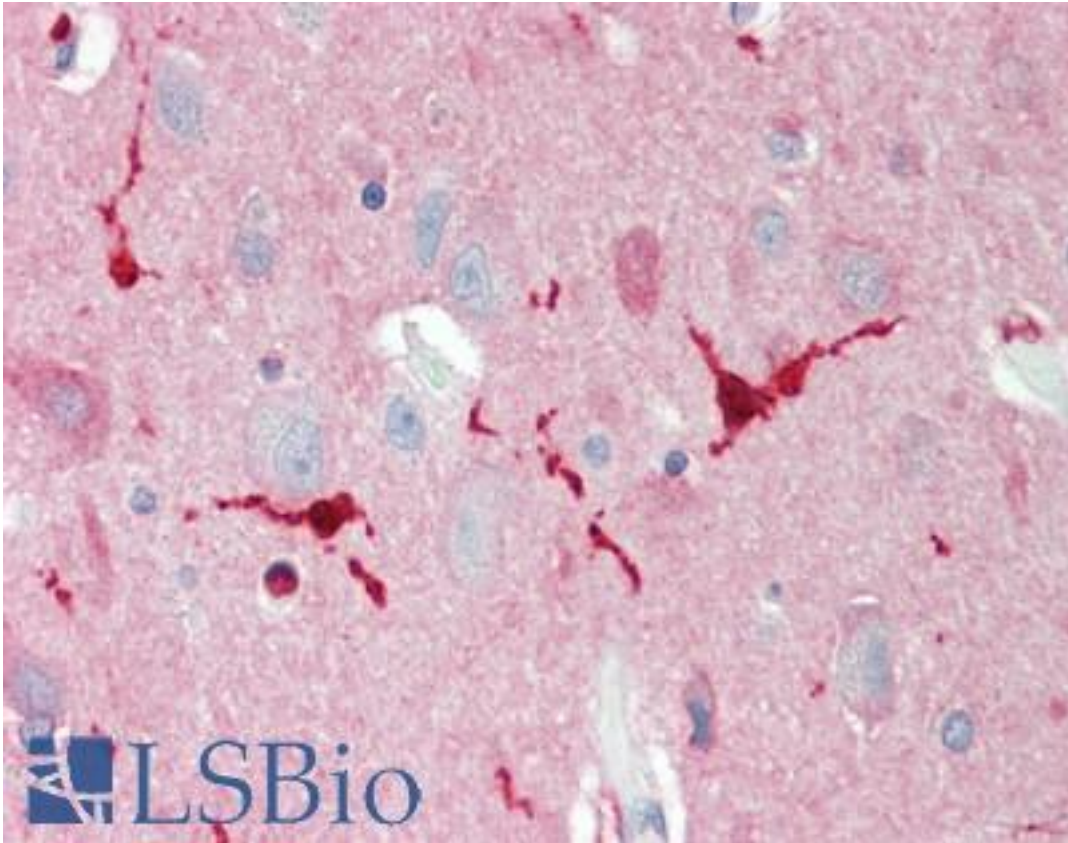


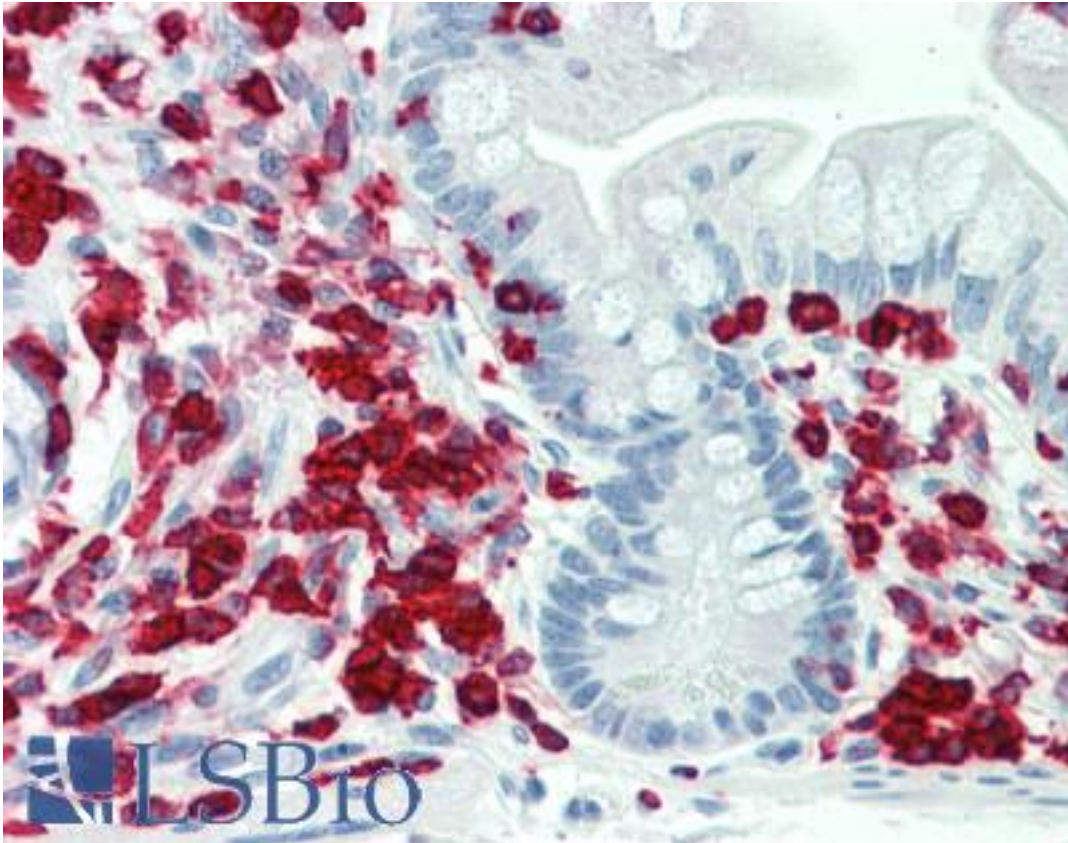
PON2 Rabbit anti-Human Polyclonal (aa78-107) Antibody - LS-B10154 - LSBio	
<b>CatalogID:</b>	LS-B10154
<b>Validation:</b>	This antibody replaces catalog number LS-C163864. It has been validated for use in the following assays: IHC-P.
<b>Target:</b>	paraoxonase 2 (PON2)
<b>Synonyms:</b>	PON2 Antibody, A-esterase 2 Antibody, Aromatic esterase 2 Antibody, Paraoxonase 2 Antibody, Paraoxonase nirs Antibody, PON 2 Antibody, Serum arylalkylphosphatase 2 Antibody
<b>Host</b>	PON2 antibody was produced in Rabbit
<b>Clonality:</b>	Polyclonal
<b>Immunogen Species:</b>	PON2 antibody was raised against Human
<b>Antigen Type:</b>	Synthetic peptide
<b>Immunogen:</b>	PON2 antibody was raised against kLH-conjugated synthetic peptide from N-terminal region of human PON2.
<b>Specificity:</b>	Human PON2
<b>Epitope:</b>	aa78-107
<b>Reactivity:</b>	Human
<b>Purification:</b>	Immunoaffinity purified
<b>Presentation:</b>	PBS, 0.09% sodium azide
<b>Recommended Storage:</b>	Maintain refrigerated at 2-8°C for up to 6 months. For long term storage store at -20°C.
<b>Uses:</b>	IHC - Paraffin (1:10 - 1:100), Western blot (1:1000), Flow Cytometry (1:10 - 1:50) (Optimal dilution to be determined by the researcher)
<b>Size:</b>	200 µl

**Immunohistochemistry Image:**



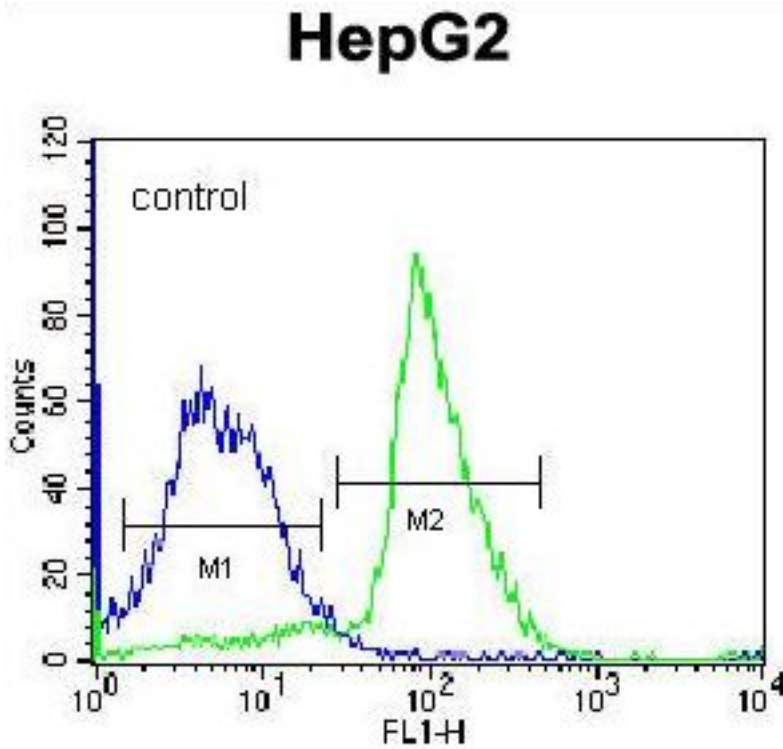
Human Brain, Cortex: Formalin-Fixed, Paraffin-Embedded (FFPE)

**Immunohistochemistry Image:**



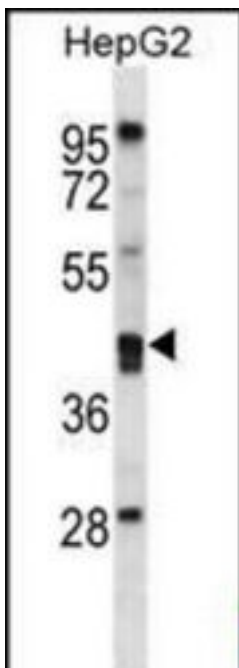
Human Small Intestine: Formalin-Fixed, Paraffin-Embedded (FFPE)

**Flow Cytometry Image:**



PON2 Antibody (N-term) flow cytometry of K562 cells (right histogram) compared to a negative control cell (left histogram). FITC-conjugated donkey-anti-rabbit secondary antibodies were used for the analysis.

**Western Blot Image:**



PON2 Antibody (N-term) Western blot of HepG2 cell line lysates (35 ug/lane). This demonstrates the PON2 antibody detected the PON2 protein (arrow).

<b>Requested From:</b>	Japan
Laboratory Reagent For In Vitro Research Use Only	
Not for resale without prior written consent from LifeSpan BioSciences, Inc.	
Created on 9/23/2014	
© 2014 LifeSpan BioSciences	