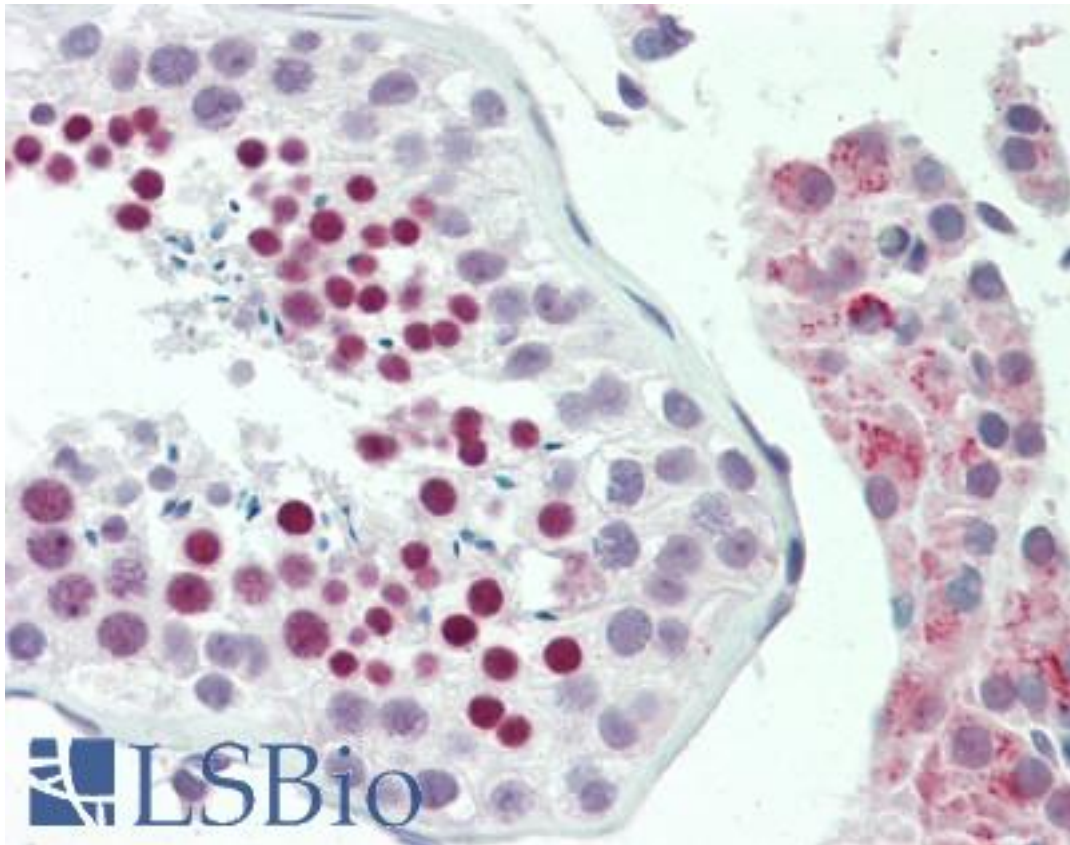


ZFP91 Rabbit anti-Human Polyclonal (aa223-253) Antibody - LS-B10151 - LSBio

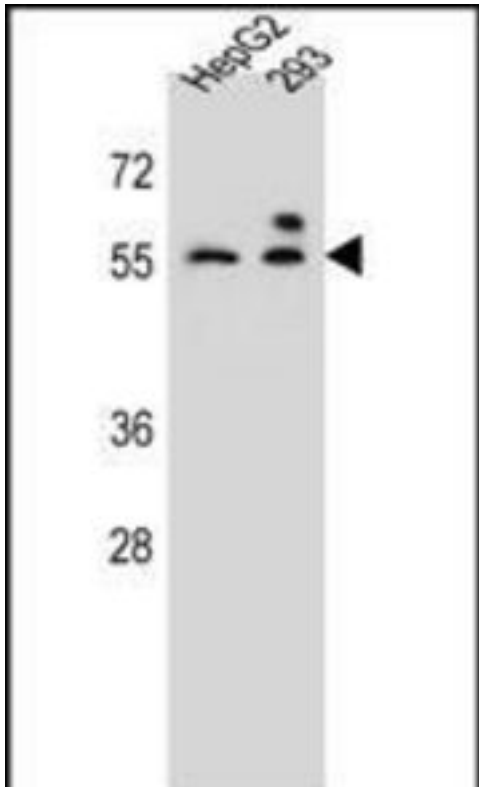
CatalogID:	LS-B10151
Validation:	This antibody replaces catalog number LS-C160779. It has been validated for use in the following assays: IHC-P.
Target:	ZFP91 zinc finger protein
Synonyms:	ZFP91 Antibody, DMS-8 Antibody, DSM-8 Antibody, FKSG11 Antibody, Zinc finger protein 757 Antibody, Zinc finger protein 91 homolog Antibody, ZFP-91 Antibody, ZNF757 Antibody, Penta zinc finger protein Antibody, PZF Antibody, ZFP91 zinc finger protein Antibody
Host	ZFP91 antibody was produced in Rabbit
Clonality:	Polyclonal
Immunogen Species:	ZFP91 antibody was raised against Human
Antigen Type:	Synthetic peptide
Immunogen:	ZFP91 antibody was raised against kLH-conjugated synthetic peptide from internal region of human ZFP91.
Specificity:	Human ZFP91
Epitope:	aa223-253
Reactivity:	Human
Purification:	Immunoaffinity purified
Presentation:	PBS, 0.09% sodium azide
Recommended Storage:	Maintain refrigerated at 2-8°C for up to 6 months. For long term storage store at -20°C.
Uses:	IHC - Paraffin (1:100), Western blot (1:1000) (Optimal dilution to be determined by the researcher)
Size:	200 µl

Immunohistochemistry Image:



Human Testis: Formalin-Fixed, Paraffin-Embedded (FFPE)

Western Blot Image:



ZFP91 Antibody (Center) Western blot of HepG2,293 cell line lysates (35 ug/lane). This demonstrates the ZFP91 antibody detected the ZFP91 protein (arrow).

Requested From:

Japan

Laboratory Reagent For In Vitro Research Use Only

Not for resale without prior written consent from LifeSpan BioSciences, Inc.

Created on 9/23/2014

© 2014 LifeSpan BioSciences