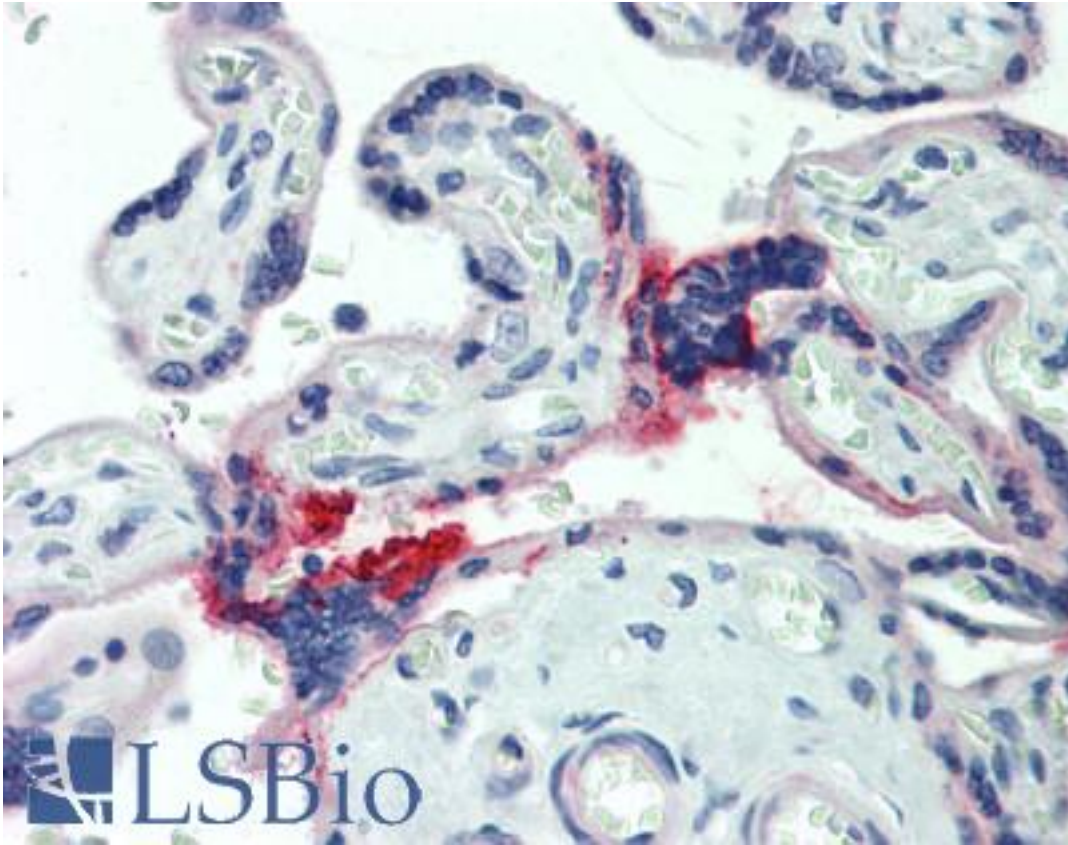


HAS3 Rabbit anti-Human Polyclonal (aa136-164) Antibody - LS-B10150 - LSBio

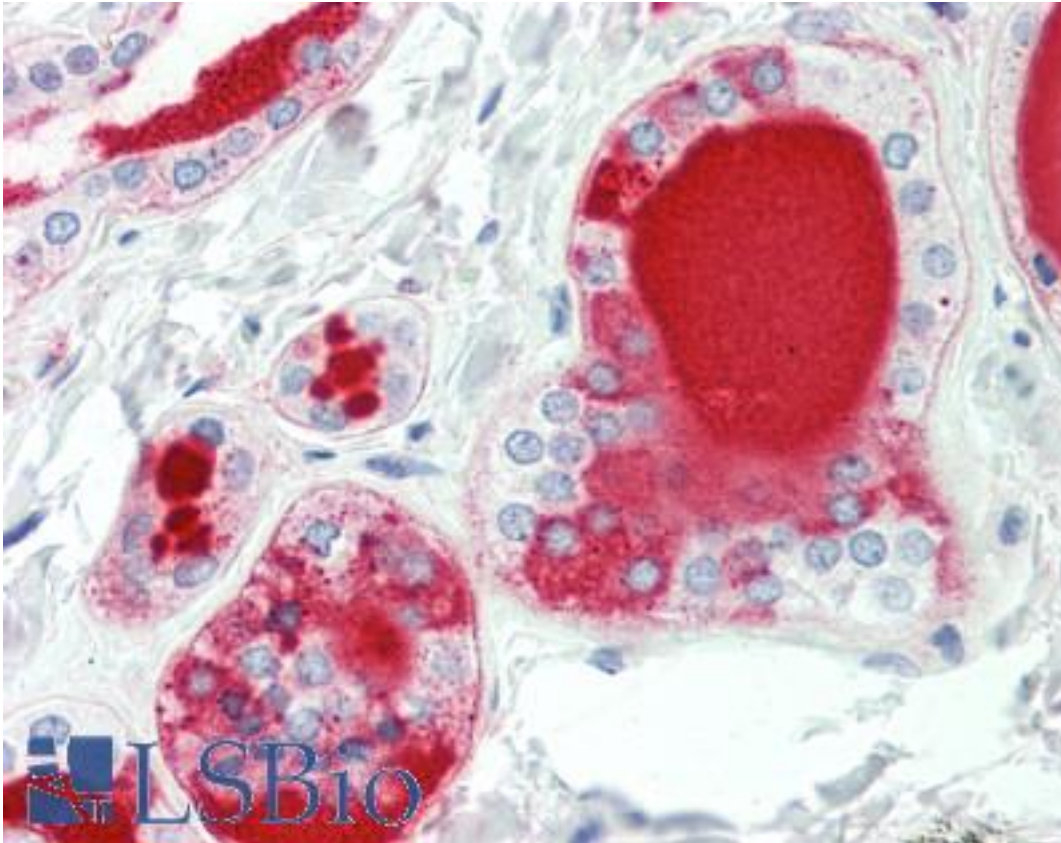
CatalogID:	LS-B10150
Validation:	This antibody replaces catalog number LS-C159808. It has been validated for use in the following assays: IHC-P.
Target:	hyaluronan synthase 3 (HAS3)
Synonyms:	HAS3 Antibody, Hyaluronan synthase 3 Antibody, Hyaluronate synthase 3 Antibody, HA synthase 3 Antibody, Hyaluronic acid synthase 3 Antibody
Host	HAS3 antibody was produced in Rabbit
Clonality:	Polyclonal
Immunogen Species:	HAS3 antibody was raised against Human
Antigen Type:	Synthetic peptide
Immunogen:	HAS3 antibody was raised against kLH-conjugated synthetic peptide from internal region of human HAS3.
Specificity:	Human HAS3
Epitope:	aa136-164
Reactivity:	Human
Purification:	Immunoaffinity purified
Presentation:	PBS, 0.09% sodium azide
Recommended Storage:	Maintain refrigerated at 2-8°C for up to 6 months. For long term storage store at -20°C.
Uses:	IHC - Paraffin (1:100), Western blot (1:1000) (Optimal dilution to be determined by the researcher)
Size:	200 µl

Immunohistochemistry Image:



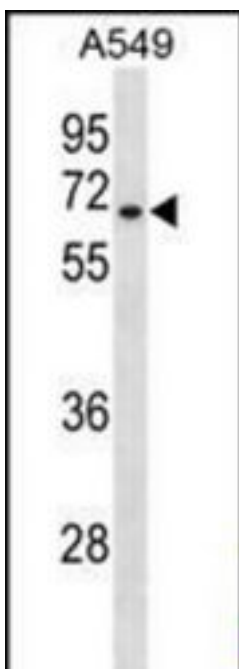
Human Placenta: Formalin-Fixed, Paraffin-Embedded (FFPE)

Immunohistochemistry Image:



Human Thyroid: Formalin-Fixed, Paraffin-Embedded (FFPE)

Western Blot Image:



HAS3 Antibody (Center) Western blot of A549 cell line lysates (35 ug/lane). This demonstrates the HAS3 antibody detected the HAS3 protein (arrow).

Requested From:	Japan
Laboratory Reagent For In Vitro Research Use Only	
Not for resale without prior written consent from LifeSpan BioSciences, Inc.	
Created on 9/23/2014	
© 2014 LifeSpan BioSciences	