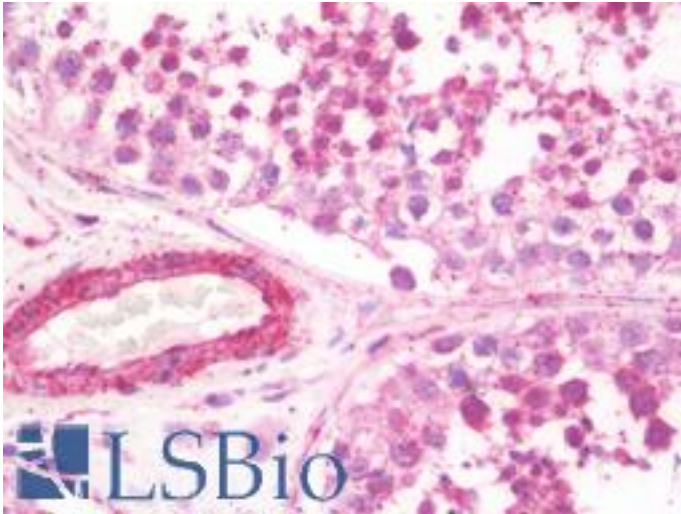


BHLHA15 Rabbit anti-Human Polyclonal (Internal) Antibody - LS-B10140 - LSBio

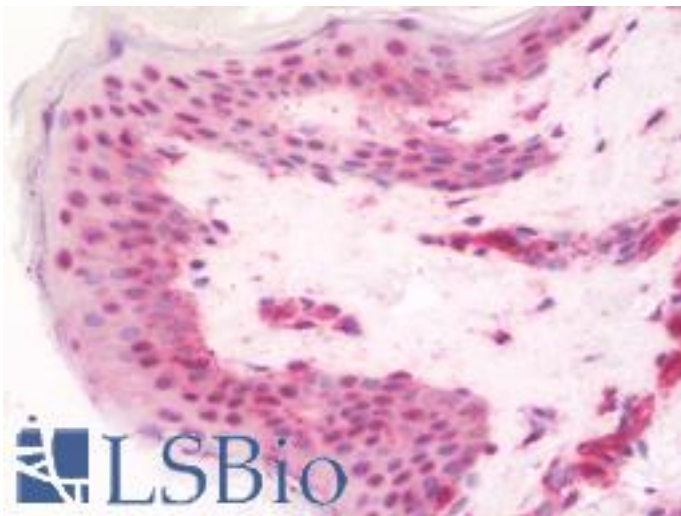
CatalogID:	LS-B10140
Validation:	This antibody replaces catalog number LS-C201147. It has been validated for use in the following assays: IHC-P.
Target:	basic helix-loop-helix family, member a15 (BHLHA15)
Synonyms:	BHLHA15 Antibody, BHLHB8 Antibody, Class II bHLH protein MIST1 Antibody, MIST-1 Antibody, MIST1 Antibody
Host	BHLHA15 antibody was produced in Rabbit
Clonality:	Polyclonal
Isotype:	IgG
Immunogen Species:	BHLHA15 antibody was raised against Human
Immunogen:	BHLHA15 antibody was raised against 18 amino acid peptide near the center of human BHLHA15.
Specificity:	BHLHA15 antibody is human, mouse and rat reactive.
Epitope:	Internal
Reactivity:	Human, Mouse, Rat
Purification:	Immunoaffinity purified
Presentation:	PBS, 0.02% sodium azide.
Recommended Storage:	Long term: -20°C; Short term: +4°C. Avoid repeat freeze-thaw cycles.
Uses:	IHC - Paraffin (10 µg/ml), Immunofluorescence (20 µg/ml), Western blot (1 - 2 µg/ml), ELISA (Optimal dilution to be determined by the researcher)
Size:	50 µg
Concentration:	1 mg/ml

Immunohistochemistry Image:



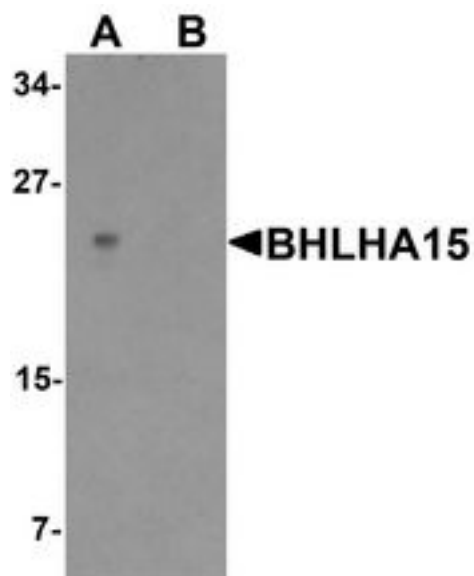
Human Testis: Formalin-Fixed, Paraffin-Embedded (FFPE)

Immunohistochemistry Image:



Human Skin: Formalin-Fixed, Paraffin-Embedded (FFPE)

Western Blot Image:



Western blot analysis of BHLHA15 in rat small Intestine tissue lysate with BHLHA15 antibody at 1 ug/ml in (A) the absence and (B) the presence of blocking peptide

Requested From:

Japan

Laboratory Reagent For In Vitro Research Use Only

Not for resale without prior written consent from LifeSpan BioSciences, Inc.

Created on 9/23/2014

© 2014 LifeSpan BioSciences