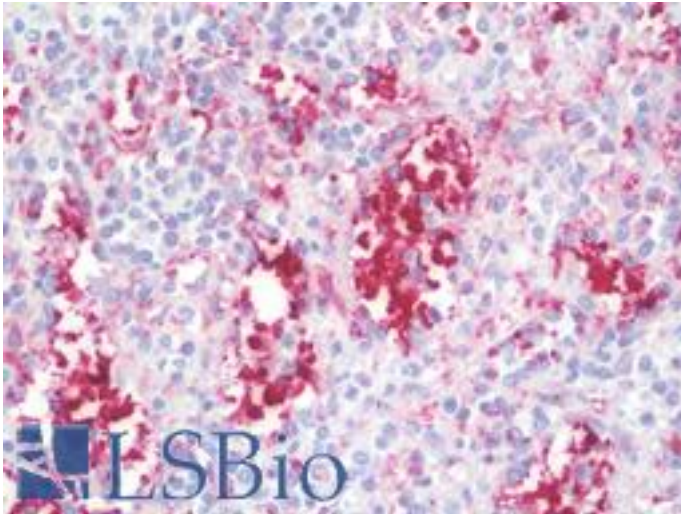


IL37 Rabbit anti-Human Polyclonal (N-Terminus) Antibody - LS-B10134 - LSBio

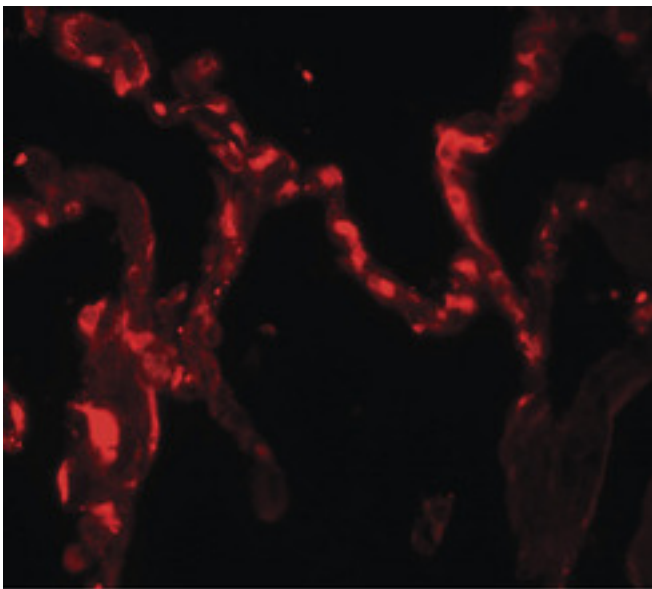
CatalogID:	LS-B10134
Validation:	This antibody replaces catalog number LS-C201137. It has been validated for use in the following assays: IHC-P.
Target:	interleukin 37 (IL37)
Synonyms:	IL37 Antibody, FIL1 Antibody, FIL1 zeta Antibody, FIL1(ZETA) Antibody, IL-1 zeta Antibody, IL-1F7 Antibody, IL-1H Antibody, IL-1RP1 Antibody, IL-1X Antibody, IL-37 Antibody, IL37 Antibody, Interleukin-1 homolog 4 Antibody, Interleukin-1 zeta Antibody, Interleukin-1-related protein Antibody, Interleukin-23 Antibody, Interleukin-37 Antibody, IL1F7 Antibody, Interleukin 1, zeta Antibody, Interleukin-1 family member 7 Antibody, FIL1Z Antibody, IL-1H4 Antibody, IL1RP1 Antibody, Interleukin 1 family member 7 Antibody, Interleukin 37 Antibody, IL-1X protein Antibody, IL1H4 Antibody, Interleukin-1 superfamily z Antibody
Family / Subfamily:	IL-1 / not assigned-IL-1
Host	IL37 antibody was produced in Rabbit
Clonality:	Polyclonal
Isotype:	IgG
Immunogen Species:	IL37 antibody was raised against Human
Immunogen:	IL37 antibody was raised against 17 amino acid peptide near the amino terminus of human IL-37.
Specificity:	IL-37 antibody is human specific. Multiple isoforms of IL-37 are known to exist; this antibody will only detect the largest isoform. IL-37 antibody is predicted to not cross-react with IL-36.
Epitope:	N-Terminus
Reactivity:	Human
Purification:	Immunoaffinity purified
Presentation:	PBS, 0.02% sodium azide.
Recommended Storage:	Long term: -20°C; Short term: +4°C. Avoid repeat freeze-thaw cycles.
Uses:	IHC - Paraffin (10 µg/ml), Immunofluorescence (20 µg/ml), Western blot (1 µg/ml), ELISA (Optimal dilution to be determined by the researcher)
Size:	50 µg
Concentration:	1 mg/ml

Immunohistochemistry Image:



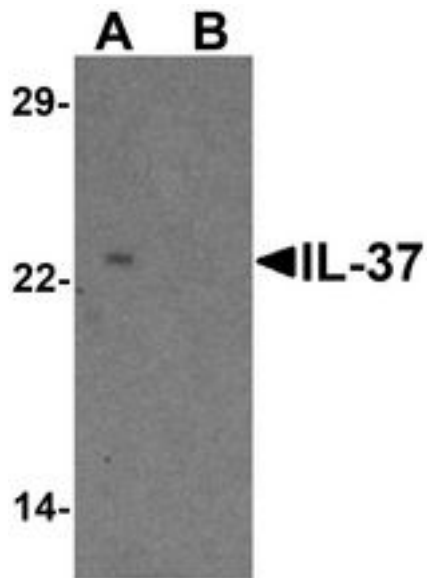
Human Spleen: Formalin-Fixed, Paraffin-Embedded (FFPE)

Immunofluorescence Image:



Immunofluorescence of IL-12A in human kidney tissue with IL-12A antibody at 20 ug/ml.

Western Blot Image:



Western blot analysis of IL-37 in human lung tissue lysate with IL-37 antibody at 1 ug/ml in (A) the presence and (B) the absence of blocking peptide.

Requested From:

Japan

Laboratory Reagent For In Vitro Research Use Only

Not for resale without prior written consent from LifeSpan BioSciences, Inc.

Created on 9/23/2014

© 2014 LifeSpan BioSciences