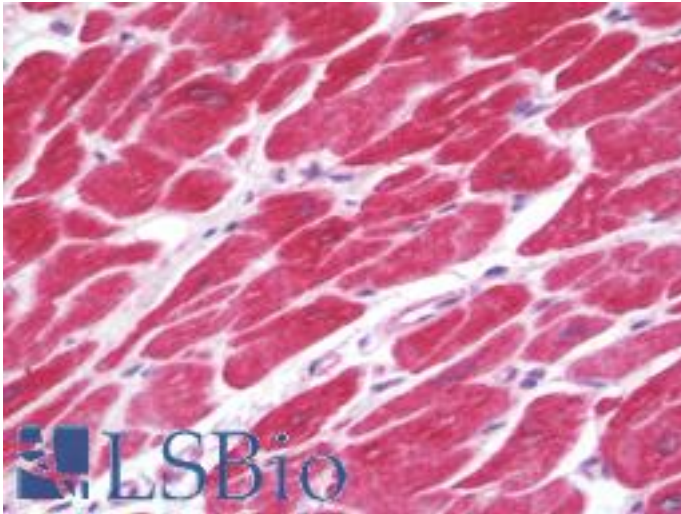


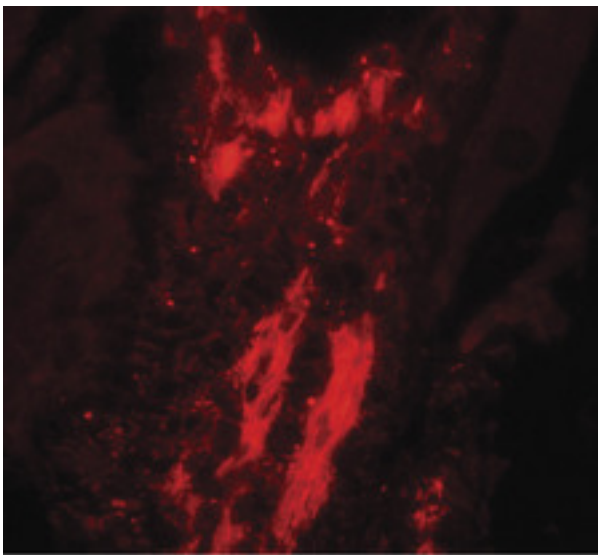
VCL / Vinculin Rabbit anti-Human Polyclonal (C-Terminus) Antibody - LS-B10133 - LSBio	
<b>CatalogID:</b>	LS-B10133
<b>Validation:</b>	This antibody replaces catalog number LS-C201135. It has been validated for use in the following assays: IHC-P.
<b>Target:</b>	vinculin (VCL)
<b>Synonyms:</b>	VCL Antibody, CMD1W Antibody, CMH15 Antibody, Metavinculin Antibody, Vinculin Antibody, MVCL Antibody
<b>Family / Subfamily:</b>	Cytoskeleton
<b>Host</b>	VCL antibody was produced in Rabbit
<b>Clonality:</b>	Polyclonal
<b>Isotype:</b>	IgG
<b>Immunogen Species:</b>	VCL / Vinculin antibody was raised against Human
<b>Immunogen:</b>	VCL / Vinculin antibody was raised against 16 amino acid peptide near the carboxy terminus of human Vinculin.
<b>Specificity:</b>	Vinculin antibody is human, mouse and rat specific. At least three isoforms of Vinculin are known to exist.
<b>Epitope:</b>	C-Terminus
<b>Reactivity:</b>	Human, Mouse, Rat
<b>Purification:</b>	Immunoaffinity purified
<b>Presentation:</b>	PBS, 0.02% sodium azide.
<b>Recommended Storage:</b>	Long term: -20°C; Short term: +4°C. Avoid repeat freeze-thaw cycles.
<b>Uses:</b>	IHC - Paraffin (10 µg/ml), Immunofluorescence (20 µg/ml), Western blot (1 - 2 µg/ml), ELISA (Optimal dilution to be determined by the researcher)
<b>Size:</b>	50 µg
<b>Concentration:</b>	1 mg/ml

**Immunohistochemistry Image:**



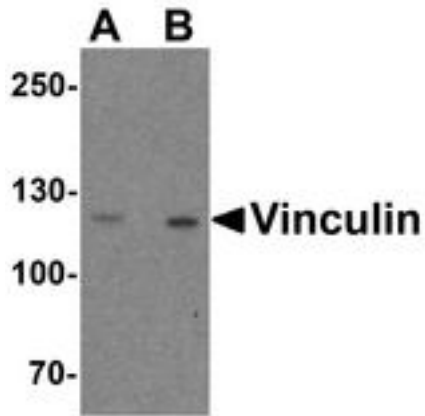
Human Heart: Formalin-Fixed, Paraffin-Embedded (FFPE)

**Immunofluorescence Image:**

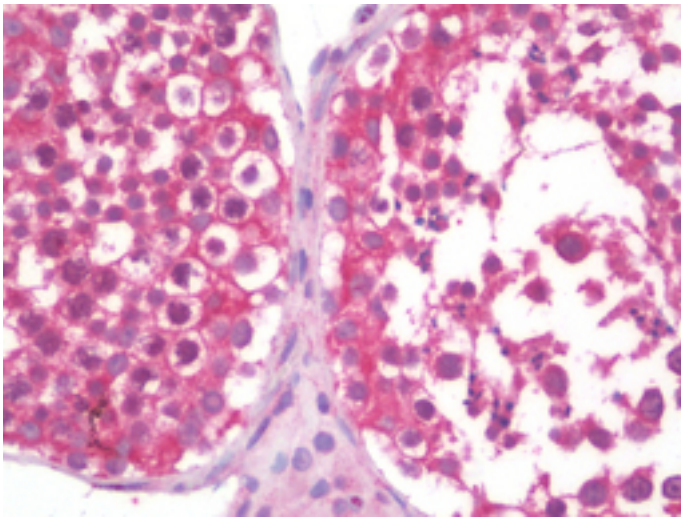


Immunofluorescence of Vinculin in rat small intestine tissue with Vinculin antibody at 20 ug/ml.

**Western Blot Image:**



Western blot analysis of Vinculin in PC-3 cell lysate with Vinculin antibody at (A) 1 and (B) 2 ug/ml.



Human Testis: Formalin-Fixed, Paraffin-Embedded (FFPE)

**Requested From:**

Japan

Laboratory Reagent For In Vitro Research Use Only

Not for resale without prior written consent from LifeSpan BioSciences, Inc.

Created on 9/23/2014

© 2014 LifeSpan BioSciences