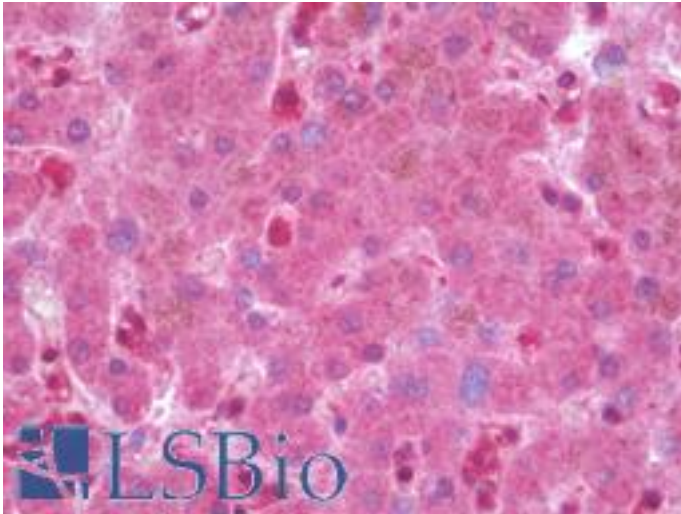


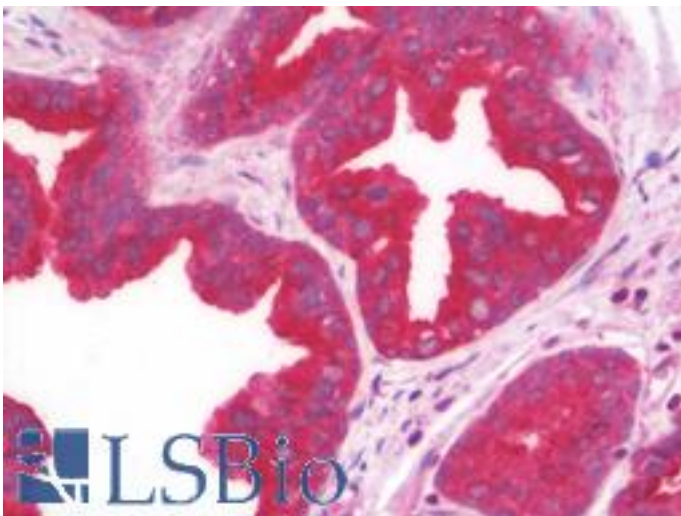
| B2M / Beta 2 Microglobulin Rabbit anti-Human Polyclonal (C-Terminus) Antibody - LS-B10120 - LSBio |   |
|---|---|
| <b>CatalogID:</b>   | LS-B10120   |
| <b>Validation:</b>  | This antibody replaces catalog number LS-C201114. It has been validated for use in the following assays: IHC-P.                                   |
| <b>Target:</b>  | beta-2-microglobulin (B2M)  |
| <b>Synonyms:</b>  | B2M Antibody, Beta 2 Microglobulin Antibody, Beta-2-microglobulin Antibody, Beta -2-microglobin Antibody  |
| <b>Host</b>   | B2M antibody was produced in Rabbit   |
| <b>Clonality:</b>   | Polyclonal  |
| <b>Isotype:</b>   | IgG   |
| <b>Immunogen Species:</b>   | B2M / Beta 2 Microglobulin antibody was raised against Human  |
| <b>Immunogen:</b>   | B2M / Beta 2 Microglobulin antibody was raised against 15 amino acid peptide near the carboxy terminus of human B2M.                              |
| <b>Specificity:</b>   | B2M antibody is human reactive.   |
| <b>Epitope:</b>   | C-Terminus  |
| <b>Reactivity:</b>  | Human   |
| <b>Purification:</b>  | Immunoaffinity purified   |
| <b>Presentation:</b>  | PBS, 0.02% sodium azide.  |
| <b>Recommended Storage:</b>   | Long term: -20°C; Short term: +4°C. Avoid repeat freeze-thaw cycles.  |
| <b>Uses:</b>  | IHC - Paraffin (10 µg/ml), Immunofluorescence (20 µg/ml), Western blot (1 - 2 µg/ml), ELISA (Optimal dilution to be determined by the researcher) |
| <b>Size:</b>  | 50 µg   |
| <b>Concentration:</b>   | 1 mg/ml   |

**Immunohistochemistry Image:**



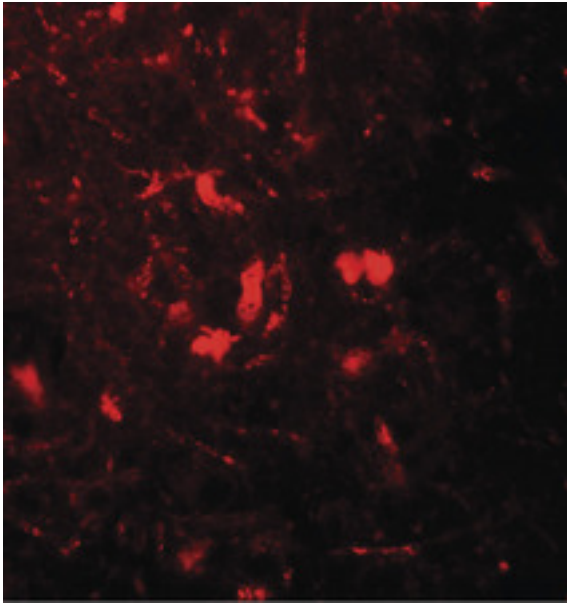
Human Liver: Formalin-Fixed, Paraffin-Embedded (FFPE)

**Immunohistochemistry Image:**



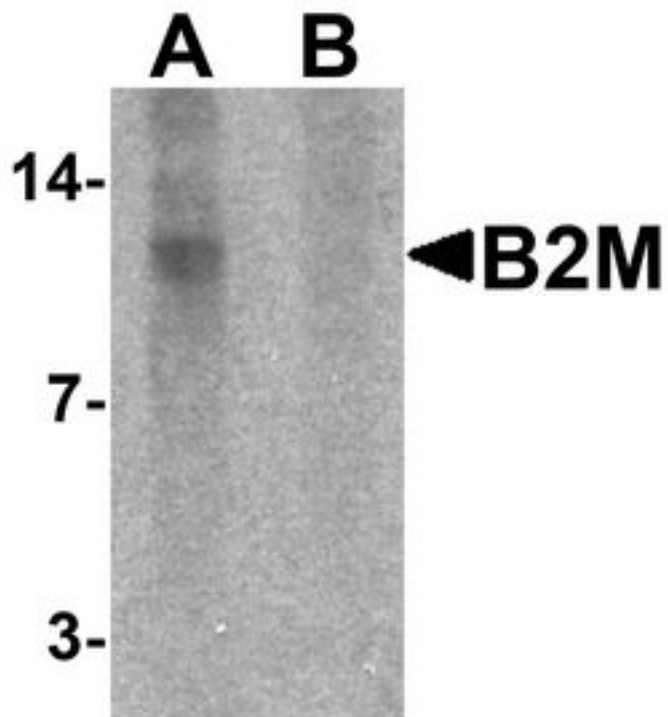
Human Prostate: Formalin-Fixed, Paraffin-Embedded (FFPE)

**Immunofluorescence Image:**



Immunofluorescence of B2M in mouse brain tissue with B2M antibody at 20 ug/ml.

**Western Blot Image:**



Western blot analysis of B2M in SK-N-SH cell lysate with B2M antibody at 1 ug/ml in (A) the absence and (B) the presence of blocking peptide.

Requested From:

Japan

Laboratory Reagent For In Vitro Research Use Only

Not for resale without prior written consent from LifeSpan BioSciences, Inc.

Created on 9/23/2014

© 2014 LifeSpan BioSciences