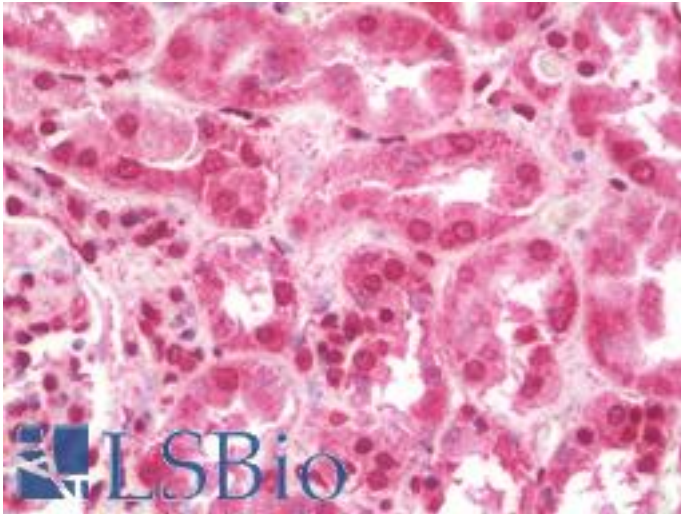


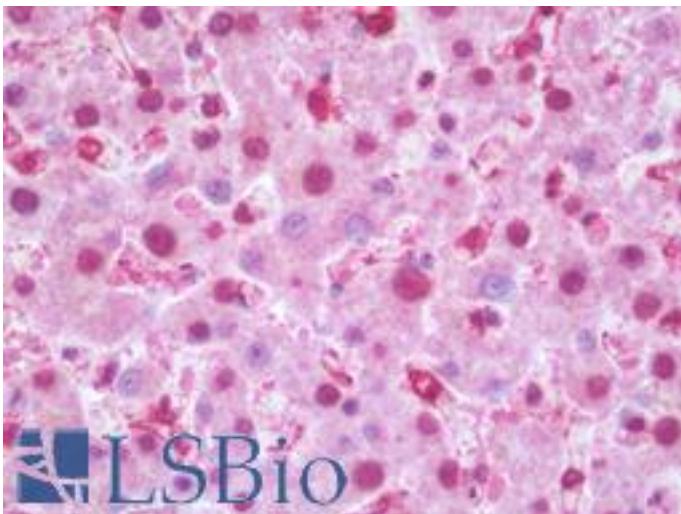
CNRIP1 Rabbit anti-Human Polyclonal (Internal) Antibody - LS-B10098 - LSBio	
<b>CatalogID:</b>	LS-B10098
<b>Validation:</b>	This antibody replaces catalog number LS-C201075. It has been validated for use in the following assays: IHC-P.
<b>Target:</b>	cannabinoid receptor interacting protein 1 (CNRIP1)
<b>Synonyms:</b>	CNRIP1 Antibody, C2orf32 Antibody, CRIP-1 Antibody, CRIP1a Antibody, CRIP1b Antibody, DKFZP566K1924 Antibody
<b>Host</b>	CNRIP1 antibody was produced in Rabbit
<b>Clonality:</b>	Polyclonal
<b>Isotype:</b>	IgG
<b>Immunogen Species:</b>	CNRIP1 antibody was raised against Human
<b>Immunogen:</b>	CNRIP1 antibody was raised against 15 amino acid peptide near the center of human CNRIP1.
<b>Specificity:</b>	At least two isoforms of CNRIP1 are known to exist; this antibody will detect both isoforms.
<b>Epitope:</b>	Internal
<b>Reactivity:</b>	Human, Mouse, Rat
<b>Purification:</b>	Immunoaffinity purified
<b>Presentation:</b>	PBS, 0.02% sodium azide.
<b>Recommended Storage:</b>	Long term: -20°C; Short term: +4°C. Avoid repeat freeze-thaw cycles.
<b>Uses:</b>	IHC - Paraffin (10 µg/ml), Immunofluorescence (20 µg/ml), Western blot (1 - 2 µg/ml), ELISA (Optimal dilution to be determined by the researcher)
<b>Size:</b>	50 µg
<b>Concentration:</b>	1 mg/ml

**Immunohistochemistry Image:**



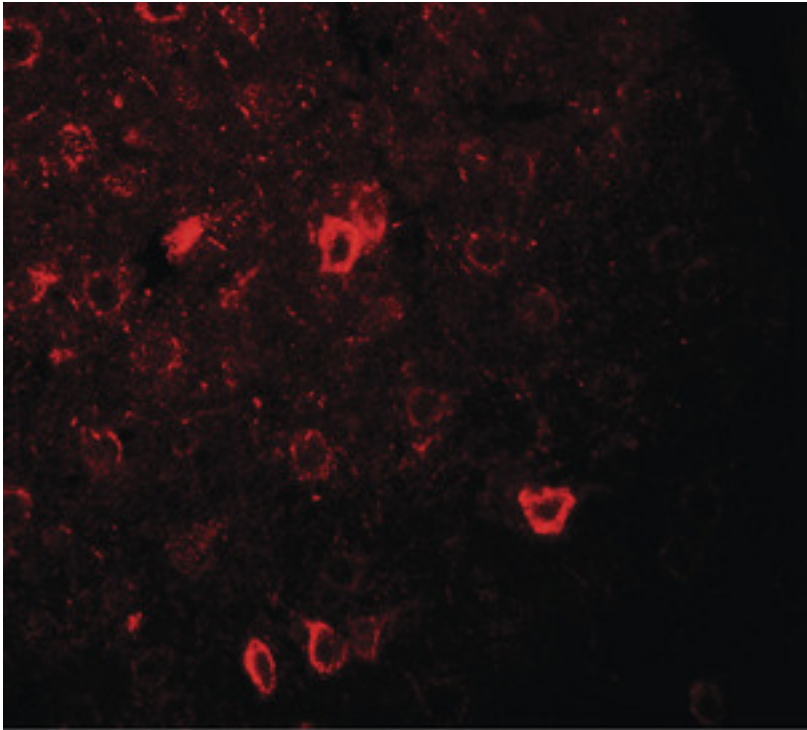
Human Kidney: Formalin-Fixed, Paraffin-Embedded (FFPE)

**Immunohistochemistry Image:**



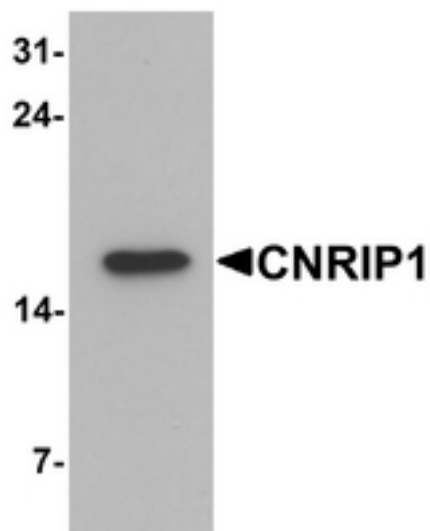
Human Liver: Formalin-Fixed, Paraffin-Embedded (FFPE)

**Immunofluorescence Image:**



Immunofluorescence of CNRIP1 in rat brain tissue with CNRIP1 antibody at 20 ug/ml.

**Western Blot Image:**



Western blot analysis of CNRIP1 in human brain tissue lysate with CNRIP1 antibody at 1 ug/ml.

**Requested From:**

Japan

Laboratory Reagent For In Vitro Research Use Only

Not for resale without prior written consent from LifeSpan BioSciences, Inc.

Created on 9/23/2014

© 2014 LifeSpan BioSciences