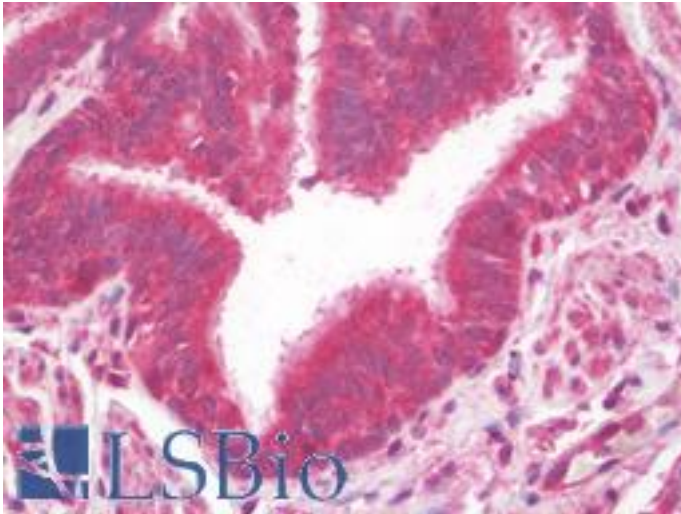


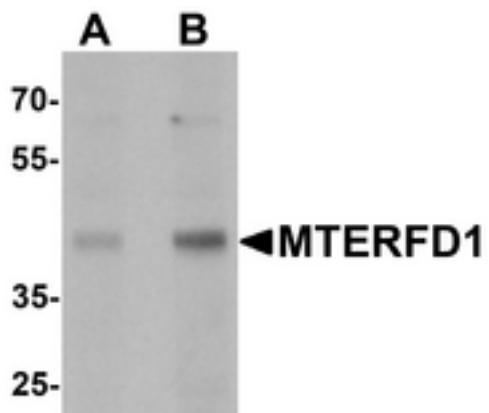
MTERFD1 Rabbit anti-Human Polyclonal (C-Terminus) Antibody - LS-B10092 - LSBio	
CatalogID:	LS-B10092
Validation:	This antibody replaces catalog number LS-C201066. It has been validated for use in the following assays: IHC-P.
Target:	MTERF Domain Containing 1 (MTERFD1)
Synonyms:	MTERFD1 Antibody, CGI-12 Antibody, MTERF3 Antibody, MTERF domain containing 1 Antibody
Host	MTERFD1 antibody was produced in Rabbit
Clonality:	Polyclonal
Isotype:	IgG
Immunogen Species:	MTERFD1 antibody was raised against Human
Immunogen:	MTERFD1 antibody was raised against 17 amino acid peptide near the carboxy terminus of human MTERFD1.
Specificity:	At least three isoforms of MTERFD1 are known to exist. MTERFD1 antibody is predicted to not cross-react with other MTERFD protein family members.
Epitope:	C-Terminus
Reactivity:	Human, Mouse
Purification:	Immunoaffinity purified
Presentation:	PBS, 0.02% sodium azide.
Recommended Storage:	Long term: -20°C; Short term: +4°C. Avoid repeat freeze-thaw cycles.
Uses:	IHC - Paraffin (10 µg/ml), Western blot (1 - 2 µg/ml), ELISA (Optimal dilution to be determined by the researcher)
Size:	50 µg
Concentration:	1 mg/ml

Immunohistochemistry Image:



Human Lung: Formalin-Fixed, Paraffin-Embedded (FFPE)

Western Blot Image:



Western blot analysis of MTERFD1 in 3T3 cell lysate with MTERFD1 antibody at (A) 1 and (B) 2 ug/ml.

Requested From:

Japan

Laboratory Reagent For In Vitro Research Use Only

Not for resale without prior written consent from LifeSpan BioSciences, Inc.

Created on 9/23/2014

© 2014 LifeSpan BioSciences