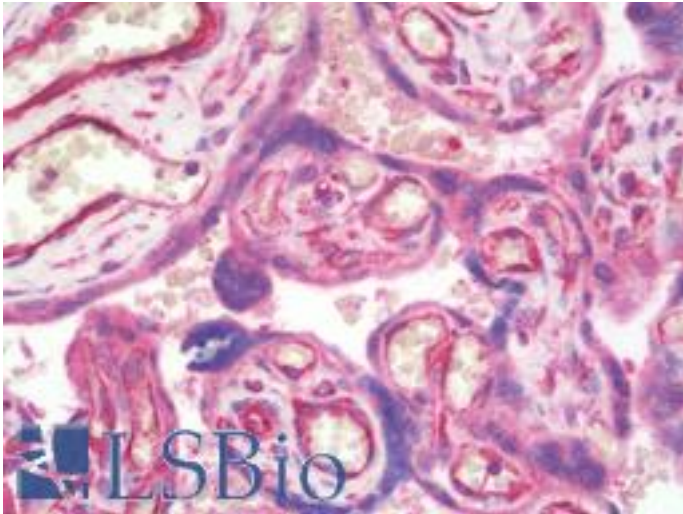


PIBF1 / PIBF Rabbit anti-Human Polyclonal (C-Terminus) Antibody - LS-B10082 - LSBio

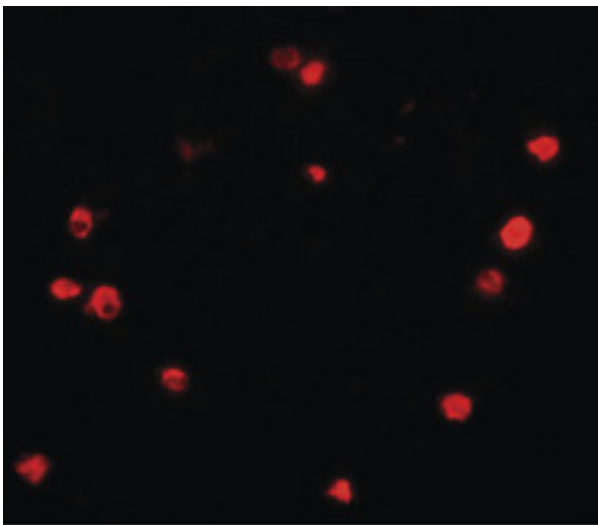
CatalogID:	LS-B10082
Validation:	This antibody replaces catalog number LS-C201049. It has been validated for use in the following assays: IHC-P.
Target:	progesterone immunomodulatory binding factor 1 (PIBF1)
Synonyms:	PIBF1 Antibody, C13orf24 Antibody, CEP90 Antibody, RP11-505F3.1 Antibody, PIBF Antibody
Host	PIBF1 antibody was produced in Rabbit
Clonality:	Polyclonal
Isotype:	IgG
Immunogen Species:	PIBF1 / PIBF antibody was raised against Human
Immunogen:	PIBF1 / PIBF antibody was raised against 15 amino acid peptide near the carboxy terminus of human PIBF1.
Specificity:	Multiple isoforms of PIBF1 exists as a result of alternative splicing event.
Epitope:	C-Terminus
Reactivity:	Human, Mouse, Rat
Purification:	Immunoaffinity purified
Presentation:	PBS, 0.02% sodium azide.
Recommended Storage:	Long term: -20°C; Short term: +4°C. Avoid repeat freeze-thaw cycles.
Uses:	IHC - Paraffin (10 µg/ml), Immunofluorescence (20 µg/ml), Western blot (1 - 2 µg/ml), ELISA (Optimal dilution to be determined by the researcher)
Size:	50 µg
Concentration:	1 mg/ml

Immunohistochemistry Image:



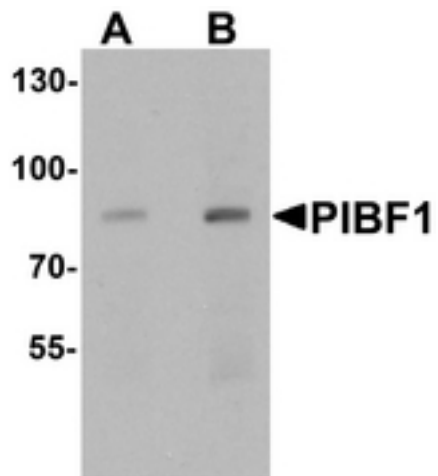
Human Placenta: Formalin-Fixed, Paraffin-Embedded (FFPE)

Immunofluorescence Image:



Immunofluorescence of PBIF in human spleen tissue with PBIF antibody at 20 ug/ml.

Western Blot Image:



Western blot analysis of PIBF1 in human placenta tissue lysate with PIBF1 antibody at (A) 1 and (B) 2 ug/ml

Requested From:

Japan

Laboratory Reagent For In Vitro Research Use Only

Not for resale without prior written consent from LifeSpan BioSciences, Inc.

Created on 9/23/2014

© 2014 LifeSpan BioSciences