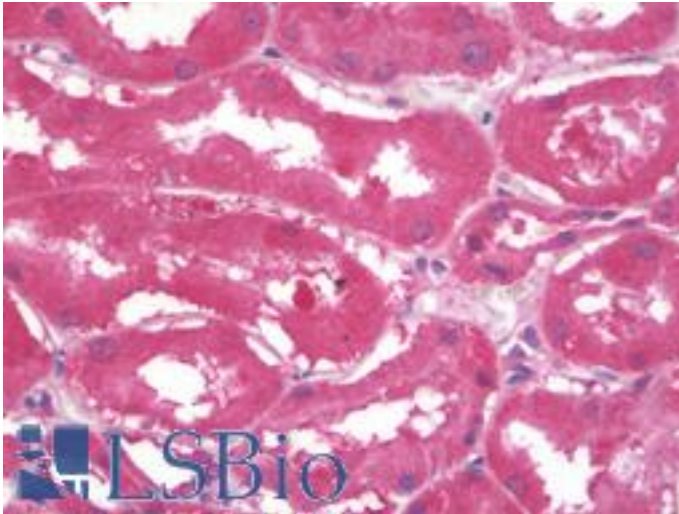


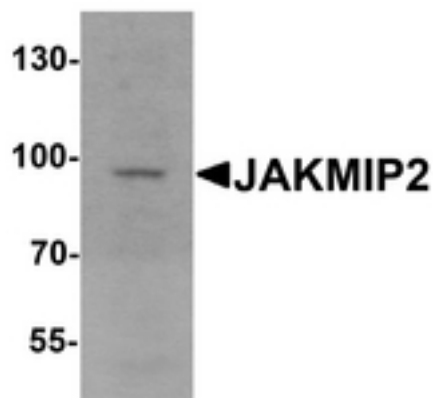
JAKMIP2 Rabbit anti-Human Polyclonal (Internal) Antibody - LS-B10070 - LSBio	
CatalogID:	LS-B10070
Validation:	This antibody replaces catalog number LS-C201026. It has been validated for use in the following assays: IHC-P.
Target:	janus kinase and microtubule interacting protein 2 (JAKMIP2)
Synonyms:	JAKMIP2 Antibody, CTCL tumor antigen HD-CL-04 Antibody, JAMIP2 Antibody, KIAA0555 Antibody, NECC1 Antibody
Host	JAKMIP2 antibody was produced in Rabbit
Clonality:	Polyclonal
Isotype:	IgG
Immunogen Species:	JAKMIP2 antibody was raised against Human
Immunogen:	JAKMIP2 antibody was raised against 16 amino acid peptide near the center of human JAKMIP2.
Specificity:	At least four isoforms of JAKMIP2 are known to exist; this antibody will detect all four isoforms. JAKMIP2 antibody is predicted to not cross-react with JAKMIP1.
Epitope:	Internal
Reactivity:	Human, Mouse
Purification:	Immunoaffinity purified
Presentation:	PBS, 0.02% sodium azide.
Recommended Storage:	Long term: -20°C; Short term: +4°C. Avoid repeat freeze-thaw cycles.
Uses:	IHC - Paraffin (10 µg/ml), Western blot (1 - 2 µg/ml), ELISA (Optimal dilution to be determined by the researcher)
Size:	50 µg
Concentration:	1 mg/ml

Immunohistochemistry Image:



Human Kidney: Formalin-Fixed, Paraffin-Embedded (FFPE)

Western Blot Image:



Western blot analysis of JAKMIP2 in mouse brain tissue lysate with JAKMIP2 antibody at 1 ug/ml.

Requested From:

Japan

Laboratory Reagent For In Vitro Research Use Only

Not for resale without prior written consent from LifeSpan BioSciences, Inc.

Created on 9/23/2014

© 2014 LifeSpan BioSciences