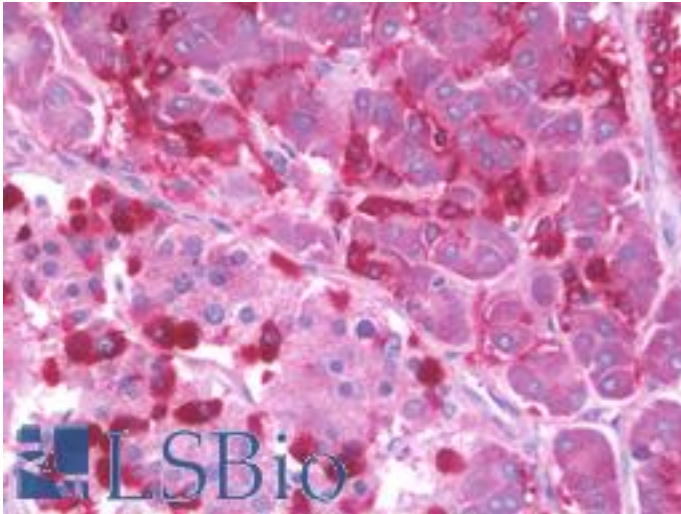


**SIDT2 Rabbit anti-Human Polyclonal (N-Terminus) Antibody - LS-B10067 - LSBio**

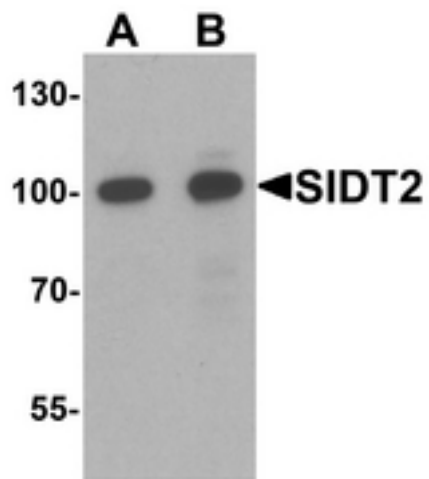
<b>CatalogID:</b>	LS-B10067
<b>Validation:</b>	This antibody replaces catalog number LS-C201023. It has been validated for use in the following assays: IHC-P.
<b>Target:</b>	SID1 transmembrane family, member 2 (SIDT2)
<b>Synonyms:</b>	SIDT2 Antibody, CGI-40 Antibody
<b>Host</b>	SIDT2 antibody was produced in Rabbit
<b>Clonality:</b>	Polyclonal
<b>Isotype:</b>	IgG
<b>Immunogen Species:</b>	SIDT2 antibody was raised against Human
<b>Immunogen:</b>	SIDT2 antibody was raised against 18 amino acid peptide near the amino terminus of human SIDT2.
<b>Specificity:</b>	Multiple isoforms of SIDT2 are known to exist; this antibody is predicted to not cross-react with other members of the SID1 transmembrane family.
<b>Epitope:</b>	N-Terminus
<b>Reactivity:</b>	Human, Mouse, Rat
<b>Purification:</b>	Immunoaffinity purified
<b>Presentation:</b>	PBS, 0.02% sodium azide.
<b>Recommended Storage:</b>	Long term: -20°C; Short term: +4°C. Avoid repeat freeze-thaw cycles.
<b>Uses:</b>	IHC - Paraffin (10 µg/ml), Western blot (0.5 - 1 µg/ml), ELISA (Optimal dilution to be determined by the researcher)
<b>Size:</b>	50 µg
<b>Concentration:</b>	1 mg/ml

**Immunohistochemistry Image:**



Human Pancreas: Formalin-Fixed, Paraffin-Embedded (FFPE)

**Western Blot Image:**



Western blot analysis of SIDT2 in mouse brain tissue lysate with SIDT2 antibody at (A) 0.5 and (B) 1 ug/ml.

**Requested From:**

Japan

Laboratory Reagent For In Vitro Research Use Only

Not for resale without prior written consent from LifeSpan BioSciences, Inc.

Created on 9/23/2014

© 2014 LifeSpan BioSciences