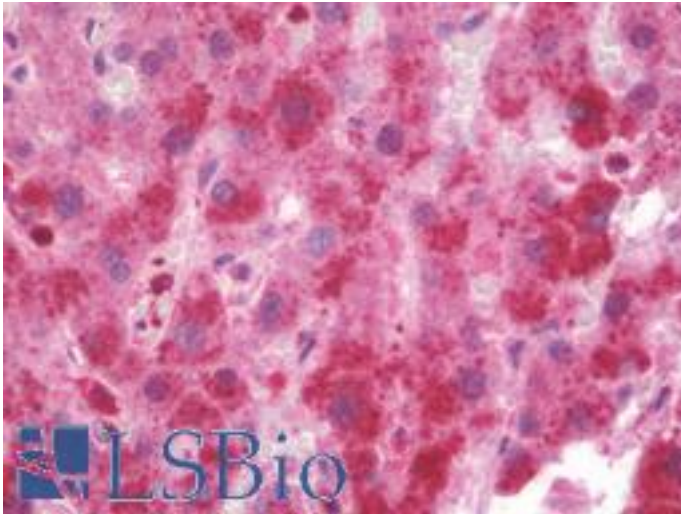


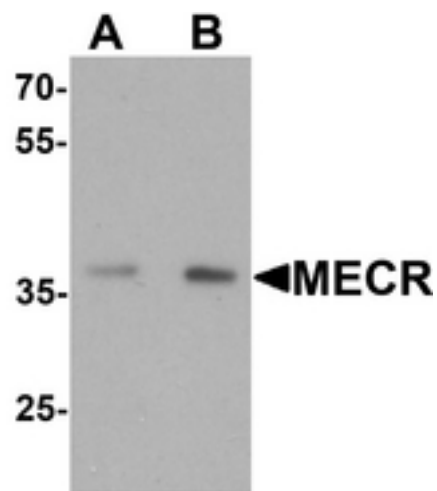
MECR Rabbit anti-Human Polyclonal (C-Terminus) Antibody - LS-B10065 - LSBio	
CatalogID:	LS-B10065
Validation:	This antibody replaces catalog number LS-C201020. It has been validated for use in the following assays: IHC-P.
Target:	Mitochondrial Trans-2-enoyl-CoA Reductase (MECR)
Synonyms:	MECR Antibody, CGI-63 Antibody, FASN2B Antibody, HsNrnf-1 Antibody, NBRF1 Antibody, NRBF-1 Antibody, NRBF1 Antibody
Host	MECR antibody was produced in Rabbit
Clonality:	Polyclonal
Isotype:	IgG
Immunogen Species:	MECR antibody was raised against Human
Immunogen:	MECR antibody was raised against 15 amino acid peptide near the carboxy terminus of human MECR.
Specificity:	At least two isoforms of MECR are known to exist; this antibody will detect both isoforms.
Epitope:	C-Terminus
Reactivity:	Human, Mouse, Rat
Purification:	Immunoaffinity purified
Presentation:	PBS, 0.02% sodium azide.
Recommended Storage:	Long term: -20°C; Short term: +4°C. Avoid repeat freeze-thaw cycles.
Uses:	IHC - Paraffin (10 µg/ml), Western blot (1 - 2 µg/ml), ELISA (Optimal dilution to be determined by the researcher)
Size:	50 µg
Concentration:	1 mg/ml

Immunohistochemistry Image:



Human Liver: Formalin-Fixed, Paraffin-Embedded (FFPE)

Western Blot Image:



Western blot analysis of MECR in human brain tissue lysate with MECR antibody at (A) 1 and (B) 2 ug/ml.

Requested From:

Japan

Laboratory Reagent For In Vitro Research Use Only

Not for resale without prior written consent from LifeSpan BioSciences, Inc.

Created on 9/23/2014

© 2014 LifeSpan BioSciences