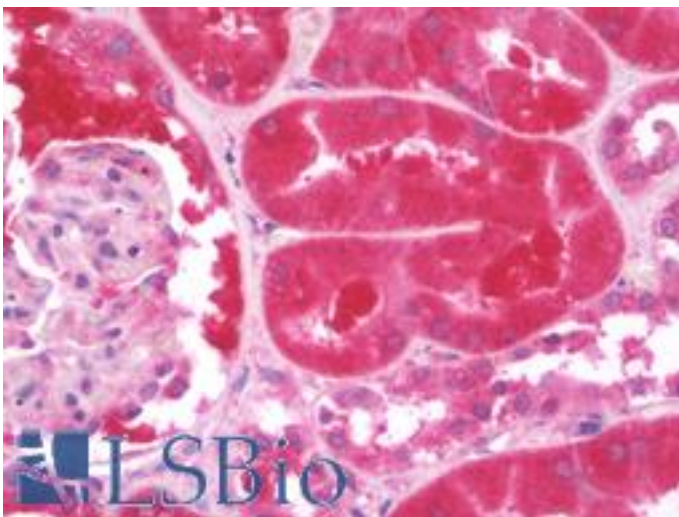


CD2AP Rabbit anti-Human Polyclonal Antibody - LS-B10060 - LSBio

CatalogID:	LS-B10060
Validation:	This antibody replaces catalog number LS-C137314. It has been validated for use in the following assays: IHC-P.
Target:	CD2-associated protein (CD2AP)
Synonyms:	CD2AP Antibody, Adapter protein CMS Antibody, CMS Antibody, CD2-associated protein Antibody
Host	CD2AP antibody was produced in Rabbit
Clonality:	Polyclonal
Immunogen Species:	CD2AP antibody was raised against Human
Antigen Type:	Synthetic peptide
Immunogen:	CD2AP antibody was raised against synthetic peptide
Reactivity:	Human, Mouse, Rat
Purification:	Affinity purified
Presentation:	PBS, pH 7.4, 0.02% sodium azide
Recommended Storage:	Store at -20°C for up to one year.
Uses:	IHC - Paraffin (5 µg/ml), Western blot (1:500 - 1:2000), ELISA (1:5000 - 1:10000) (Optimal dilution to be determined by the researcher)
Size:	50 µl
Concentration:	1 mg/ml

Immunohistochemistry Image:



Human Kidney: Formalin-Fixed, Paraffin-Embedded (FFPE)

Requested From:	Japan
Laboratory Reagent For In Vitro Research Use Only	
Not for resale without prior written consent from LifeSpan BioSciences, Inc.	
Created on 9/23/2014	
© 2014 LifeSpan BioSciences	