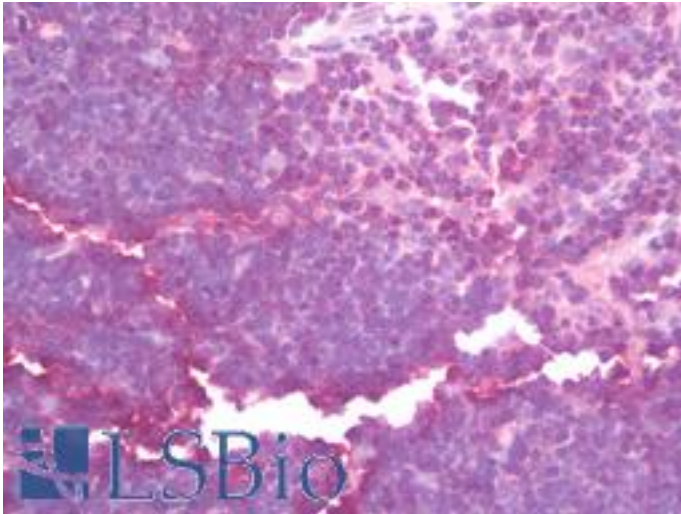


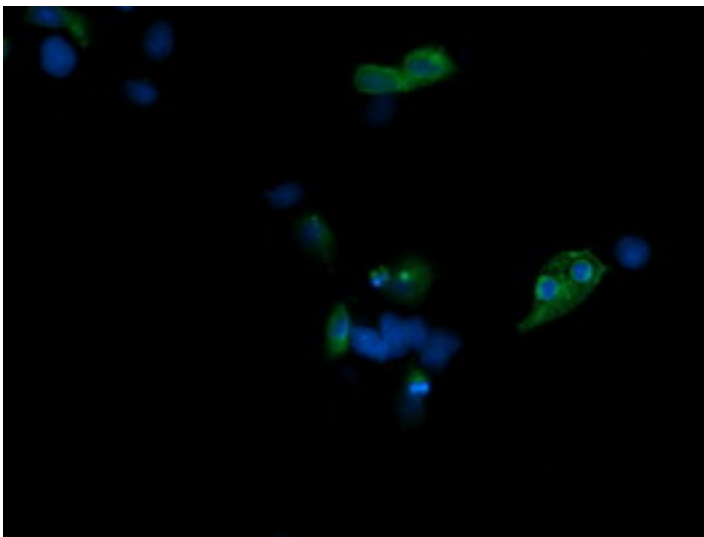
| CD1C Mouse anti-Human Monoclonal (4C7) Antibody - LS-B10059 - LSBio | |
|---------------------------------------------------------------------|-----------------------------------------------------------------------------------------------------------------------------------------------|
| CatalogID: | LS-B10059 |
| Validation: | This antibody replaces catalog number LS-C174300. It has been validated for use in the following assays: IHC-P. |
| Target: | CD1c molecule |
| Synonyms: | CD1C Antibody, BDCA1 Antibody, CD1 Antibody, CD1c molecule Antibody, CD1C antigen, c polypeptide Antibody, CD1c antigen Antibody, R7 Antibody |
| Host | CD1C antibody was produced in Mouse |
| Clonality: | Monoclonal |
| Isotype: | IgG1 |
| Clone Name: | 4C7 |
| Immunogen Species: | CD1C antibody was raised against Human |
| Antigen Type: | Recombinant protein |
| Immunogen: | CD1C antibody was raised against full length human recombinant protein of human CD1C(NP_001756) produced in HEK293T cell. |
| Specificity: | Human CD1C |
| Reactivity: | Human |
| Purification: | Protein A/G purified |
| Presentation: | PBS, pH 7.3, 1% BSA, 50% glycerol, 0.02% sodium azide |
| Recommended Storage: | Store at -20°C. Minimize freezing and thawing. |
| Uses: | IHC - Paraffin (10 µg/ml), Immunofluorescence (1:100), Western blot (1:500 - 1:2000) (Optimal dilution to be determined by the researcher) |
| Size: | 50 µl |
| Concentration: | 1 mg/ml |

Immunohistochemistry Image:



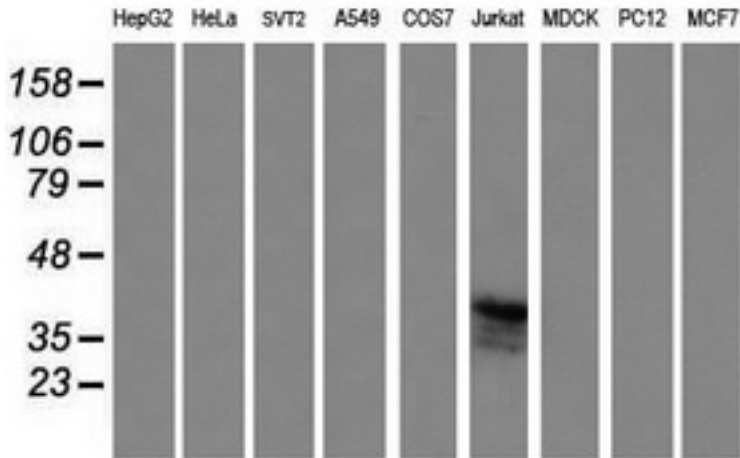
Human Thymus: Formalin-Fixed, Paraffin-Embedded (FFPE)

Immunofluorescence Image:



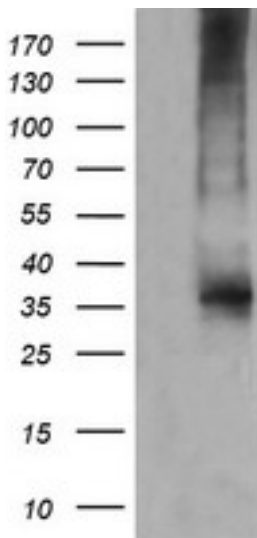
Anti-CD1C mouse monoclonal antibody immunofluorescent staining of COS7 cells transiently transfected by pCMV6-ENTRY CD1C.

Western Blot Image:



Western blot of extracts (35 ug) from 9 different cell lines by using g anti-CD1C monoclonal antibody (HepG2: human; HeLa: human; SVT2: mouse; A549: human; COS7: monkey; Jurkat: human; MDCK: canine; PC12: rat; MCF7: human).

Western Blot Image:



HEK293T cells were transfected with the pCMV6-ENTRY control (Left lane) or pCMV6-ENTRY CD1C (Right lane) cDNA for 48 hrs and lysed. Equivalent amounts of cell lysates (5 ug per lane) were separated by SDS-PAGE and immunoblotted with anti-CD1C.

Requested From:

Japan

Laboratory Reagent For In Vitro Research Use Only

Not for resale without prior written consent from LifeSpan BioSciences, Inc.

Created on 9/23/2014

© 2014 LifeSpan BioSciences