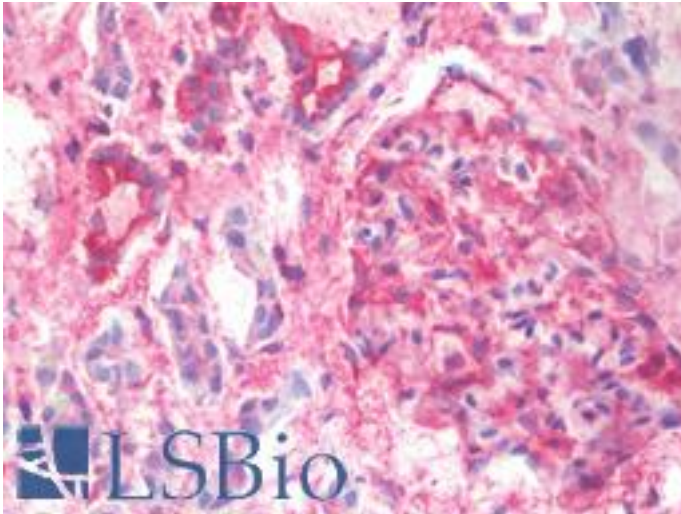


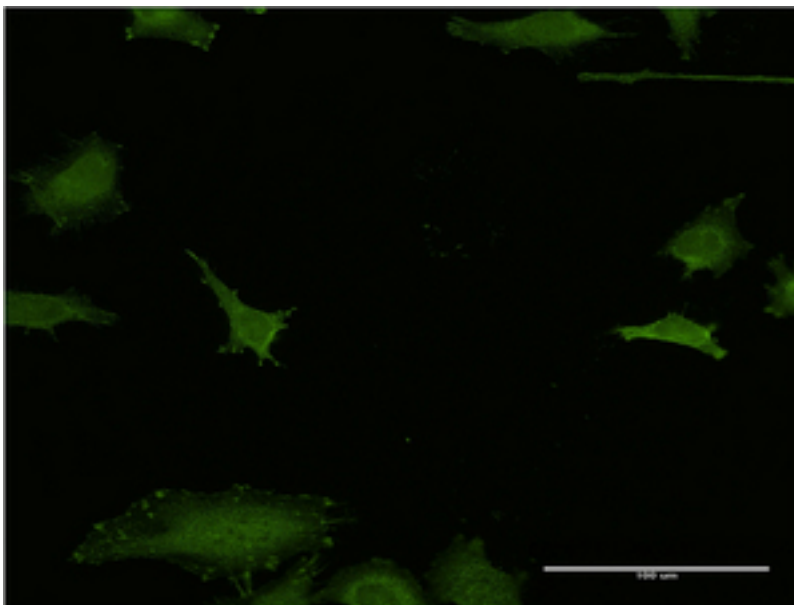
EFHD1 Mouse anti-Human Monoclonal (1H7) Antibody - LS-B10056 - LSBio	
CatalogID:	LS-B10056
Validation:	This antibody replaces catalog number LS-C105179. It has been validated for use in the following assays: IHC-Fr.
Target:	EF-hand domain family, member D1 (EFHD1)
Synonyms:	EFHD1 Antibody, EF hand domain containing 1 Antibody, MSTP133 Antibody, PP3051 Antibody, SWS2 Antibody, MST133 Antibody, Swiprosin-2 Antibody
Host	EFHD1 antibody was produced in Mouse
Clonality:	Monoclonal
Isotype:	IgG2a,k
Clone Name:	1H7
Immunogen Species:	EFHD1 antibody was raised against Human
Antigen Type:	Recombinant protein
Immunogen:	EFHD1 antibody was raised against eFHD1 (NP_079478, 168 a.a. ~ 238 a.a) full length recombinant protein with GST tag. MW of the GST tag alone is 26 KDa.
Reactivity:	Human, Mouse, Rat
Purification:	Protein A purified
Presentation:	PBS, pH 7.4.
Recommended Storage:	Store at -20°C. Aliquot to avoid freeze/thaw cycles.
Usage Summary:	Western Blot (Cell lysate) - positive control HeLa. Western Blot (Cell lysate) - positive control PC-12. Western Blot (Cell lysate) - positive control Raw 264. Western Blot (Cell lysate) - positive control NIH/3T3. Immunohistochemistry (frozen) - positive control human kidney.
Uses:	IHC - Frozen (1:50), Immunofluorescence (10 µg/ml), Western blot, ELISA (Optimal dilution to be determined by the researcher)
Uses Not Recommended:	IHC - Paraffin
Size:	50 µg

Immunohistochemistry Image:



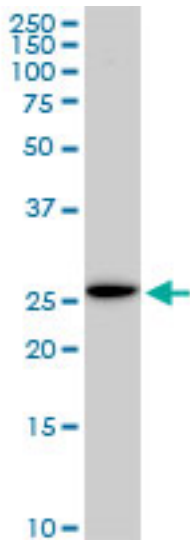
IHC with EFHD1 antibody on frozen human kidney.

Immunofluorescence Image:



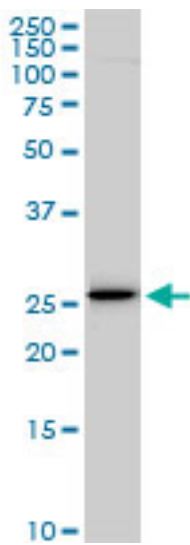
Immunofluorescence of monoclonal antibody to EFHD1 on HeLa cell [antibody concentration 10 ug/ml].

Western Blot Image:



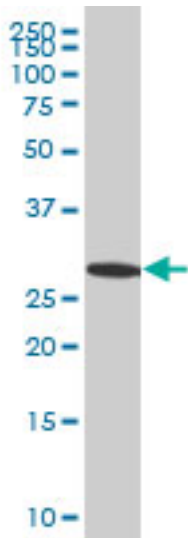
EFHD1 monoclonal antibody, clone 1H7. Western blot of EFHD1 expression in NIH/3T3.

Western Blot Image:



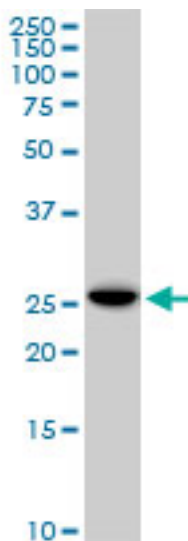
EFHD1 monoclonal antibody, clone 1H7. Western blot of EFHD1 expression in PC-12.

Western Blot Image:



EFHD1 monoclonal antibody, clone 1H7 Western blot of EFHD1 expression in HeLa.

Western Blot Image:



EFHD1 monoclonal antibody, clone 1H7. Western blot of EFHD1 expression in Raw 264.7.

Requested From:

Japan

Laboratory Reagent For In Vitro Research Use Only

Not for resale without prior written consent from LifeSpan BioSciences, Inc.

Created on 9/23/2014

© 2014 LifeSpan BioSciences