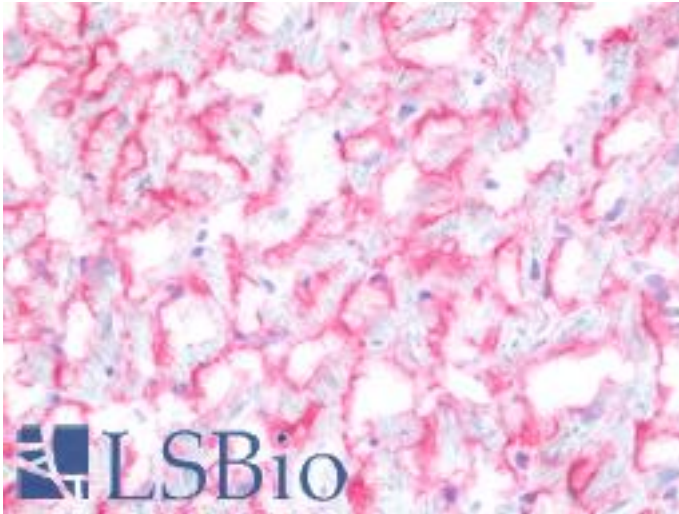


SGCB / SGC / Sarcoglycan Beta Mouse anti-Human Monoclonal (1E3) Antibody - LS-B10055 - LSBio

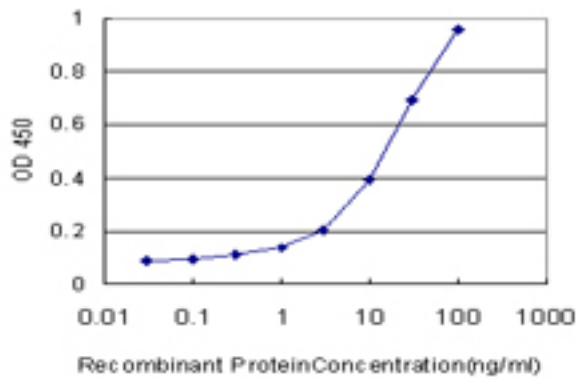
CatalogID:	LS-B10055
Validation:	This antibody replaces catalog number LS-C105024. It has been validated for use in the following assays: IHC-Fr.
Target:	sarcoglycan, beta (43kDa dystrophin-associated glycoprotein) (SGCB)
Synonyms:	SGCB Antibody, 43DAG Antibody, Beta-sarcoglycan Antibody, Beta-SG Antibody, A3b Antibody, LGMD2E Antibody, SGC Antibody
Host	SGCB antibody was produced in Mouse
Clonality:	Monoclonal
Isotype:	IgG1,k
Clone Name:	1E3
Immunogen Species:	SGCB / SGC / Sarcoglycan Beta antibody was raised against Human
Antigen Type:	Recombinant protein
Immunogen:	SGCB / SGC / Sarcoglycan Beta antibody was raised against sGCB (AAH20709, 1 a.a. ~ 319 a.a) full length recombinant protein with GST tag. MW of the GST tag alone is 26 KDa.
Reactivity:	Human
Purification:	Protein A purified
Presentation:	PBS, pH 7.4.
Recommended Storage:	Store at -20°C. Aliquot to avoid freeze/thaw cycles.
Usage Summary:	Immunohistochemistry: Frozen. Sandwich ELISA (Recombinant protein). Western Blot (Recombinant protein).
Uses:	IHC - Frozen (1:50), Western blot, ELISA (Optimal dilution to be determined by the researcher)
Uses Not Recommended:	IHC - Paraffin
Size:	50 µg

Immunohistochemistry Image:



IHC with SGCB antibody on frozen human heart.

ELISA Image:



Detection limit for recombinant GST tagged SGCB is approximately 0.3 ng/ml as a capture antibody.

Requested From:

Japan

Laboratory Reagent For In Vitro Research Use Only

Not for resale without prior written consent from LifeSpan BioSciences, Inc.

Created on 9/23/2014

© 2014 LifeSpan BioSciences