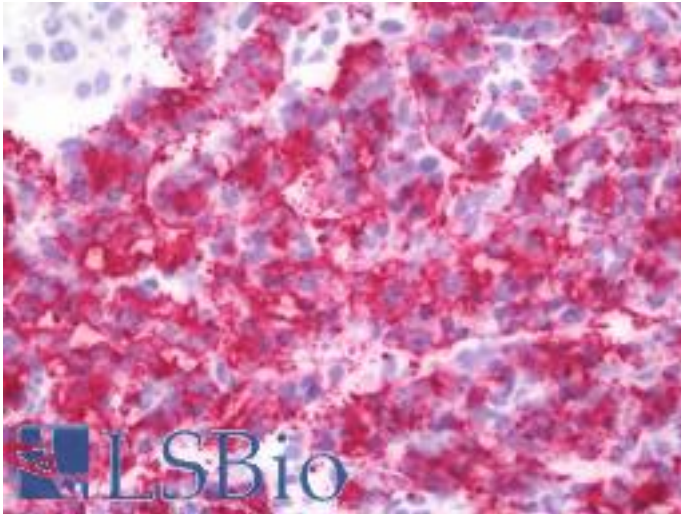


RICK / RIP2 / CCK Mouse anti-Human Monoclonal (7F5) Antibody - LS-B10054 - LSBio

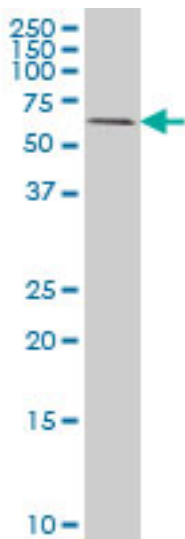
CatalogID:	LS-B10054
Validation:	This antibody replaces catalog number LS-C133571. It has been validated for use in the following assays: IHC-Fr.
Target:	receptor-interacting serine-threonine kinase 2 (RIPK2)
Synonyms:	RIPK2 Antibody, CARD-carrying kinase Antibody, CARDIAK Antibody, Growth-inhibiting gene 30 Antibody, Receptor interacting protein 2 Antibody, Receptor-interacting protein 2 Antibody, Rick Kinase Antibody, RIP2 Antibody, RICK Antibody, RIP-2 Antibody, Tyrosine-protein kinase RIPK2 Antibody, CARD3 Antibody, GIG30 Antibody
Family / Subfamily:	Protein Kinase / RIP
Host	RIPK2 antibody was produced in Mouse
Clonality:	Monoclonal
Isotype:	IgG1,k
Clone Name:	7F5
Immunogen Species:	RICK / RIP2 / CCK antibody was raised against Human
Immunogen:	RICK / RIP2 / CCK antibody was raised against rIPK2 (AAH04553, 431 a.a. ~ 541 a.a) partial recombinant protein with GST tag. MW of the GST tag alone is 26 KDa.
Specificity:	Human RIPK2
Reactivity:	Human
Purification:	Protein A purified
Presentation:	PBS, pH 7.4.
Recommended Storage:	Store at -20°C or lower. Aliquot to avoid repeated freezing and thawing.
Usage Summary:	Immunohistochemistry: Frozen. Sandwich ELISA: Recombinant protein. Western Blot: Cell lysate, Recombinant protein.
Uses:	IHC - Frozen (1:50), Western blot, ELISA (Optimal dilution to be determined by the researcher)
Uses Not Recommended:	IHC - Paraffin
Size:	50 µg

Immunohistochemistry Image:



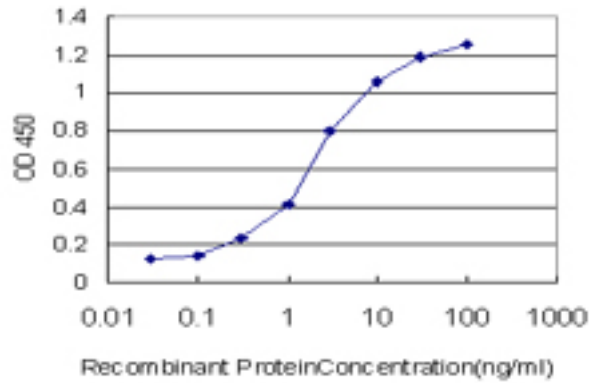
IHC with RIPK2 antibody on frozen human pancreas.

Western Blot Image:



RIPK2 monoclonal antibody, clone 7F5 Western blot of RIP2 expression in HeLa.

ELISA Image:



Detection limit for recombinant GST tagged RIPK2 is approximately 0.1 ng/ml as a capture antibody.

Requested From:

Japan

Laboratory Reagent For In Vitro Research Use Only

Not for resale without prior written consent from LifeSpan BioSciences, Inc.

Created on 9/23/2014

© 2014 LifeSpan BioSciences