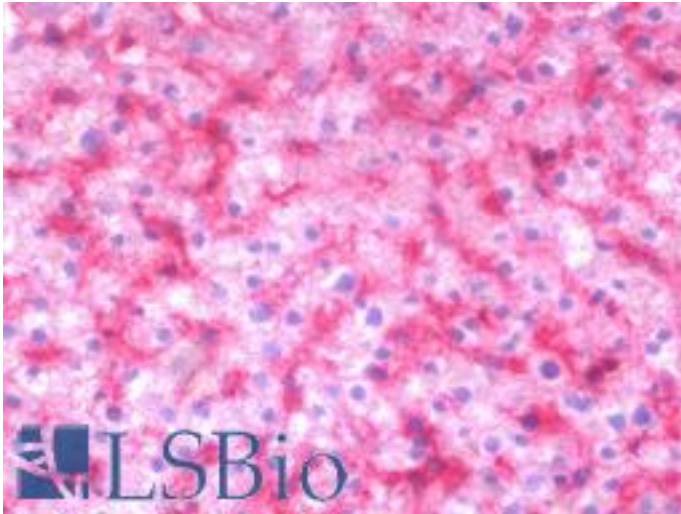


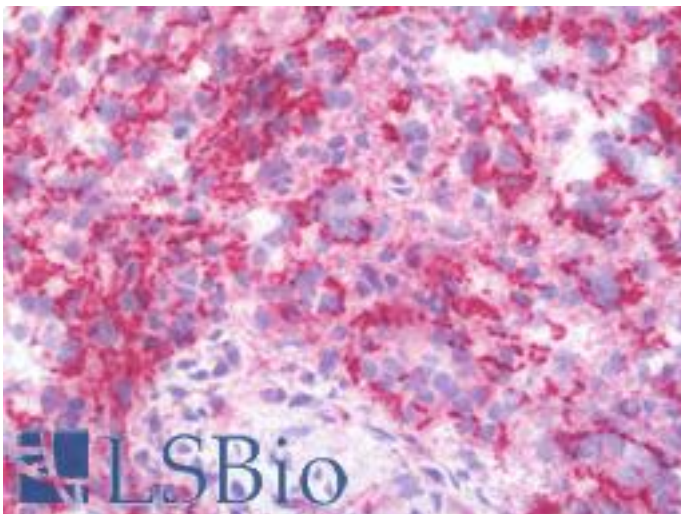
MAP3K11 / MLK3 Mouse anti-Human Monoclonal (3D11) Antibody - LS-B10053 - LSBio	
CatalogID:	LS-B10053
Validation:	This antibody replaces catalog number LS-C133912. It has been validated for use in the following assays: IHC-Fr.
Target:	mitogen-activated protein kinase kinase kinase 11 (MAP3K11)
Synonyms:	MAP3K11 Antibody, Mixed lineage kinase 3 Antibody, MLK3 Antibody, Protein-tyrosine kinase PTK1 Antibody, PTK1 Antibody, SPRK Antibody, MLK-3 Antibody, MEKK11 Antibody
Family / Subfamily:	Protein Kinase / MLK(MAP3K)
Host	MAP3K11 antibody was produced in Mouse
Clonality:	Monoclonal
Isotype:	IgG2a,k
Clone Name:	3D11
Immunogen Species:	MAP3K11 / MLK3 antibody was raised against Human
Immunogen:	MAP3K11 / MLK3 antibody was raised against mAP3K11 (NP_002410, 741 a.a. ~ 848 a.a) partial recombinant protein with GST tag. MW of the GST tag alone is 26 KDa.
Specificity:	Human MAP3K11
Reactivity:	Human
Purification:	Protein A purified
Presentation:	PBS, pH 7.4.
Recommended Storage:	Store at -20°C or lower. Aliquot to avoid repeated freezing and thawing.
Usage Summary:	Western Blot: Transfected lysate, Recombinant protein.
Uses:	IHC - Frozen (1:50), Western blot, ELISA (Optimal dilution to be determined by the researcher)
Uses Not Recommended:	IHC - Paraffin
Size:	50 µg
Concentration:	1 mg/ml

Immunohistochemistry Image:



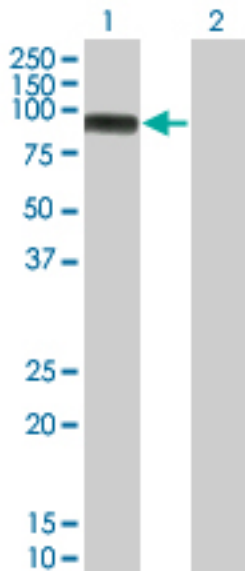
IHC with MAP3K11 antibody on frozen human liver.

Immunohistochemistry Image:



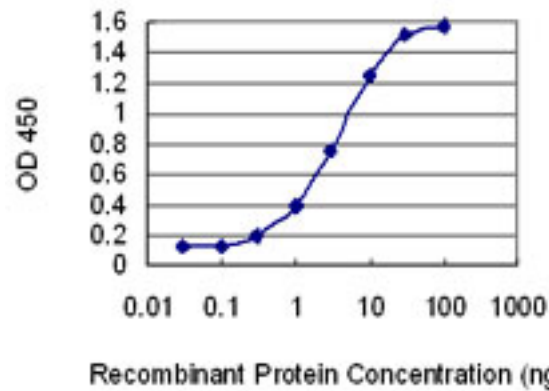
IHC with MAP3K11 antibody on frozen human spleen.

Western Blot Image:



Western blot of MAP3K11 expression in transfected 293T cell line by MAP3K11 monoclonal antibody, clone 3D11. Lane 1: MAP3K11 transfected lysate(92.7 KDa).Lane 2: Non-transfected lysate.

ELISA Image:



Detection limit for recombinant GST tagged MAP3K11 is 0.1 ng/ml as a capture antibody.

Requested From:

Japan

Laboratory Reagent For In Vitro Research Use Only

Not for resale without prior written consent from LifeSpan BioSciences, Inc.

Created on 9/23/2014

© 2014 LifeSpan BioSciences