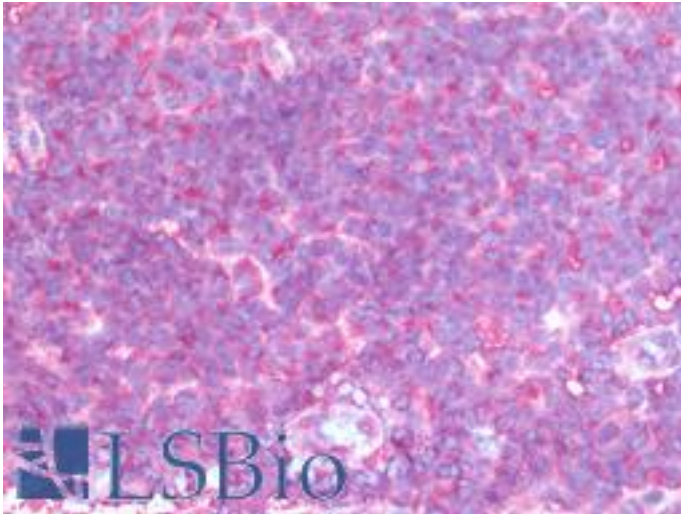


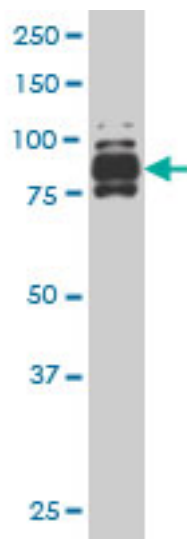
IFI16 Mouse anti-Human Monoclonal (4E6) Antibody - LS-B10051 - LSBio	
CatalogID:	LS-B10051
Validation:	This antibody replaces catalog number LS-C104976. It has been validated for use in the following assays: IHC-Fr.
Target:	interferon, gamma-inducible protein 16 (IFI16)
Synonyms:	IFI16 Antibody, IFNGIP1 Antibody, Ifi-16 Antibody, PYHIN2 Antibody
Host	IFI16 antibody was produced in Mouse
Clonality:	Monoclonal
Isotype:	IgG2a,k
Clone Name:	4E6
Immunogen Species:	IFI16 antibody was raised against Human
Antigen Type:	Recombinant protein
Immunogen:	IFI16 antibody was raised against iFI16 (AAH17059, 630 a.a. ~ 730 a.a) partial recombinant protein with GST tag. MW of the GST tag alone is 26 KDa.
Reactivity:	Human
Purification:	Protein A purified
Presentation:	PBS, pH 7.4.
Recommended Storage:	Store at -20°C. Aliquot to avoid freeze/thaw cycles.
Usage Summary:	Western Blot (Cell lysate) - positive control Hela NE. Sandwich ELISA (Recombinant protein).
Uses:	IHC - Frozen (1:50), Western blot, ELISA (Optimal dilution to be determined by the researcher)
Uses Not Recommended:	IHC - Paraffin
Size:	50 µg

Immunohistochemistry Image:



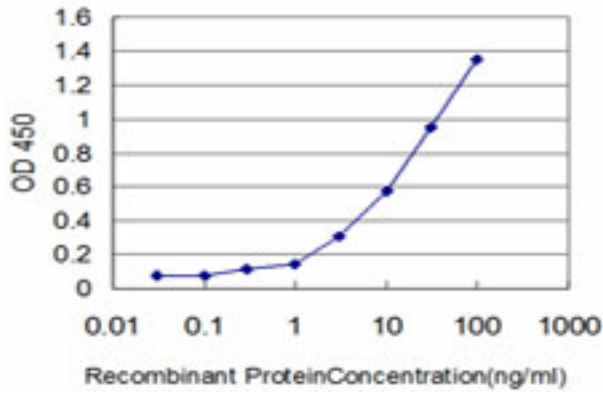
IHC with IFI16 antibody on frozen human tonsil.

Western Blot Image:



IFI16 monoclonal antibody, clone 4E6 Western blot of IFI16 expression in HeLa NE.

ELISA Image:



Detection limit for recombinant GST tagged IFI16 is approximately 0.3 ng/ml as a capture antibody.

Requested From:

Japan

Laboratory Reagent For In Vitro Research Use Only

Not for resale without prior written consent from LifeSpan BioSciences, Inc.

Created on 9/23/2014

© 2014 LifeSpan BioSciences