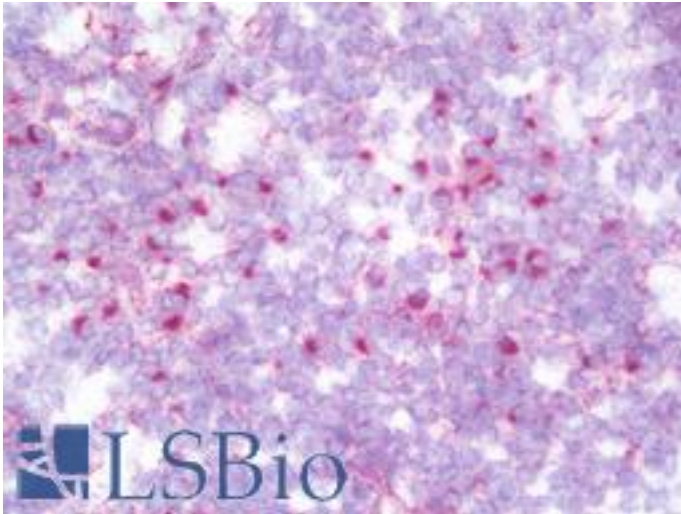


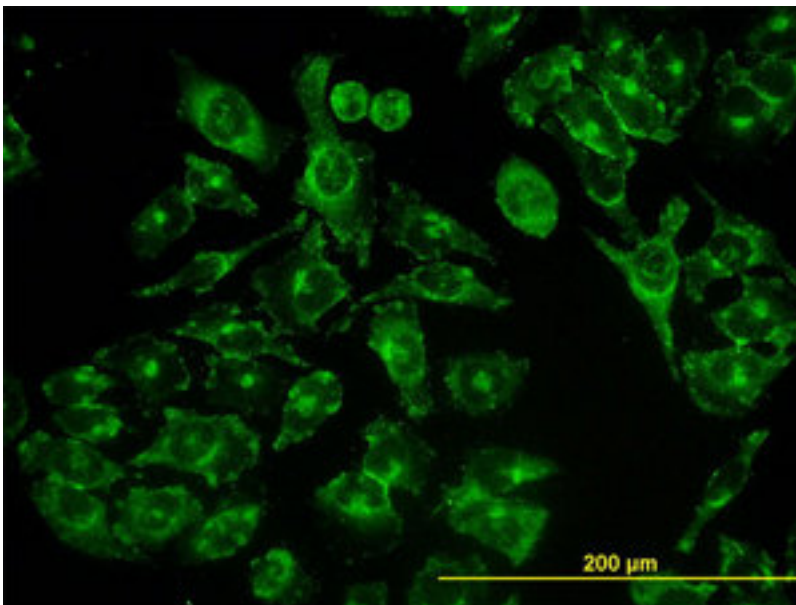
GCP60 / ACBD3 Mouse anti-Human Monoclonal (2G2) Antibody - LS-B10050 - LSBio	
<b>CatalogID:</b>	LS-B10050
<b>Validation:</b>	This antibody replaces catalog number LS-C105170. It has been validated for use in the following assays: IHC-Fr.
<b>Target:</b>	acyl-CoA binding domain containing 3 (ACBD3)
<b>Synonyms:</b>	ACBD3 Antibody, Golgi phosphoprotein 1 Antibody, GCP60 Antibody, GOCAP1 Antibody, Golgi resident protein GCP60 Antibody, GOLPH1 Antibody, PAP7 Antibody
<b>Host</b>	ACBD3 antibody was produced in Mouse
<b>Clonality:</b>	Monoclonal
<b>Isotype:</b>	IgG1,k
<b>Clone Name:</b>	2G2
<b>Immunogen Species:</b>	GCP60 / ACBD3 antibody was raised against Human
<b>Antigen Type:</b>	Recombinant protein
<b>Immunogen:</b>	GCP60 / ACBD3 antibody was raised against aCBD3 (NP_073572, 73 a.a. ~ 172 a.a) partial recombinant protein with GST tag. MW of the GST tag alone is 26 KDa.
<b>Reactivity:</b>	Human, Mouse, Rat
<b>Purification:</b>	Protein A purified
<b>Presentation:</b>	PBS, pH 7.4.
<b>Recommended Storage:</b>	Store at -20°C. Aliquot to avoid freeze/thaw cycles.
<b>Usage Summary:</b>	Western Blot (Cell lysate) - positive control HeLa. Western Blot (Cell lysate) - positive control PC-12. Western Blot (Cell lysate) - positive control Raw 264. Western Blot (Cell lysate) - positive control NIH/3T3. Western Blot (Transfected lysate) - positive control transfected 293T cell line. Immunohistochemistry (Formalin/PFA-fixed paraffin-embedded sections, 3 ug/ml) - positive control human small Intestine. Immunofluorescence (10 ug/ml) - positive control HeLa cells. Sandwich ELISA (Recombinant protein).
<b>Uses:</b>	IHC - Frozen (1:50), Immunofluorescence (10 µg/ml), Western blot, ELISA (Optimal dilution to be determined by the researcher)
<b>Uses Not Recommended:</b>	IHC - Paraffin
<b>Size:</b>	50 µg

**Immunohistochemistry Image:**



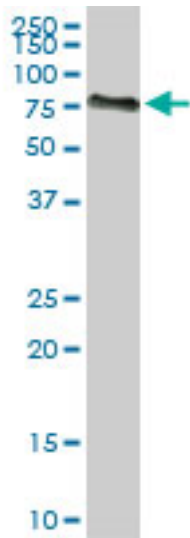
IHC with ACBD3 antibody on frozen human tonsil.

**Immunofluorescence Image:**



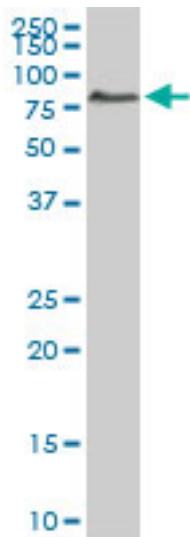
Immunofluorescence of monoclonal antibody to ACBD3 on HeLa cell (antibody concentration 10 ug/ml).

**Western Blot Image:**



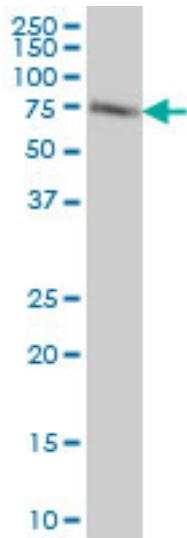
ACBD3 monoclonal antibody, clone 2G2. Western blot of ACBD3 expression in Raw 264.7.

**Western Blot Image:**



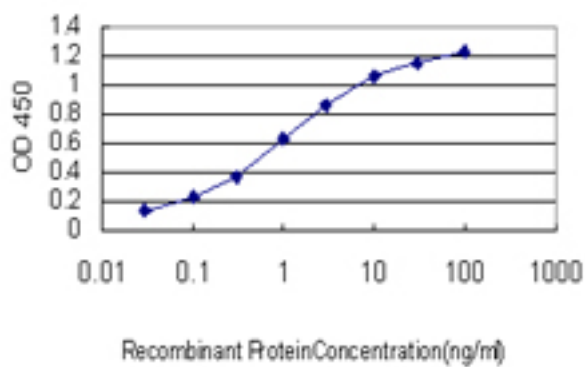
ACBD3 monoclonal antibody, clone 2G2. Western blot of ACBD3 expression in NIH/3T3.

**Western Blot Image:**



ACBD3 monoclonal antibody, clone 2G2 Western blot of ACBD3 expression in HeLa.

**ELISA Image:**



Detection limit for recombinant GST tagged ACBD3 is approximately 0.1 ng/ml as a capture antibody.

**Requested From:**

Japan

Laboratory Reagent For In Vitro Research Use Only

Not for resale without prior written consent from LifeSpan BioSciences, Inc.

Created on 9/23/2014

© 2014 LifeSpan BioSciences