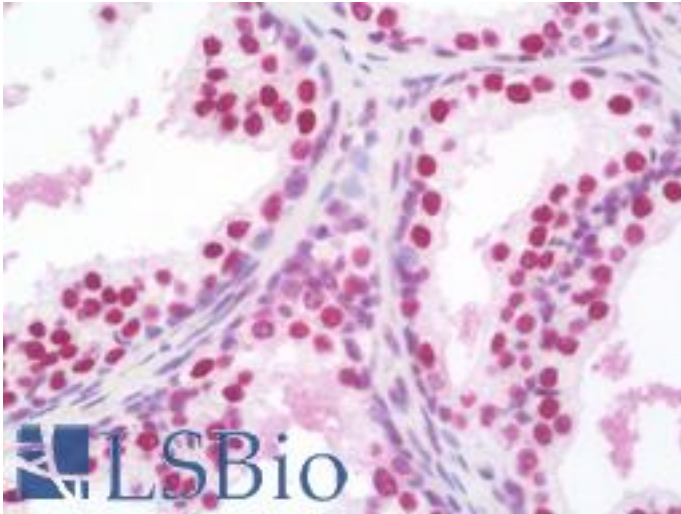


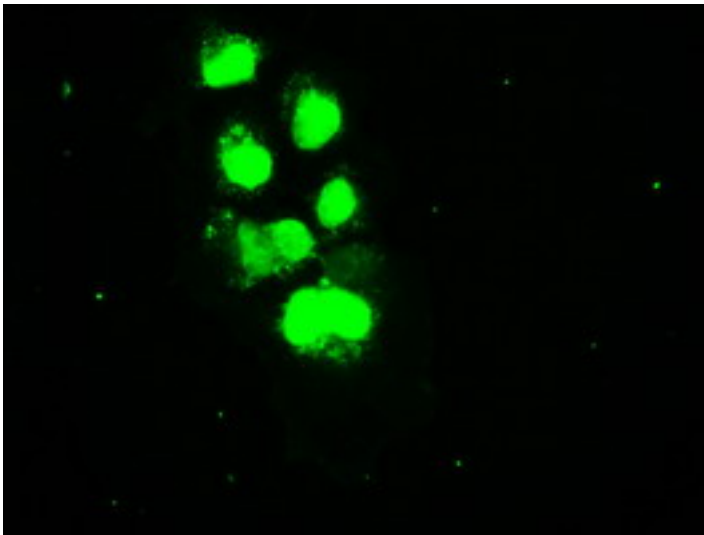
SSB / La Mouse anti-Human Monoclonal (1E11) Antibody - LS-B10046 - LSBio	
<b>CatalogID:</b>	LS-B10046
<b>Validation:</b>	This antibody replaces catalog number LS-C114512. It has been validated for use in the following assays: IHC-P.
<b>Target:</b>	Sjogren syndrome antigen B (autoantigen La) (SSB)
<b>Synonyms:</b>	SSB Antibody, Autoantigen La Antibody, La Antibody, La ribonucleoprotein Antibody, Lupus La antigen Antibody, SS-B Antibody, SS-B/La protein Antibody, La autoantigen Antibody, LARP3 Antibody, Lupus La protein Antibody
<b>Host</b>	SSB antibody was produced in Mouse
<b>Clonality:</b>	Monoclonal
<b>Isotype:</b>	IgG2a
<b>Clone Name:</b>	1E11
<b>Immunogen Species:</b>	SSB / La antibody was raised against Human
<b>Antigen Type:</b>	Transfected Cells
<b>Immunogen:</b>	SSB / La antibody was raised against protein expressed in 293T cell transfected with human SSB expression vector.
<b>Specificity:</b>	Human SSB / La
<b>Reactivity:</b>	Human, Monkey, Mouse, Rat, Dog
<b>Purification:</b>	Protein A/G purified
<b>Presentation:</b>	PBS, pH 7.3, 1% BSA, 50% glycerol, 0.02% sodium azide
<b>Recommended Storage:</b>	Store at -20°C. Minimize freezing and thawing.
<b>Uses:</b>	IHC - Paraffin (10 µg/ml), Immunofluorescence (1:50 - 1:100), Western blot (1:1000 - 1:2000), Immunoprecipitation, Flow Cytometry (1:100) (Optimal dilution to be determined by the researcher)
<b>Size:</b>	50 µl
<b>Concentration:</b>	1.41 mg/ml

**Immunohistochemistry Image:**



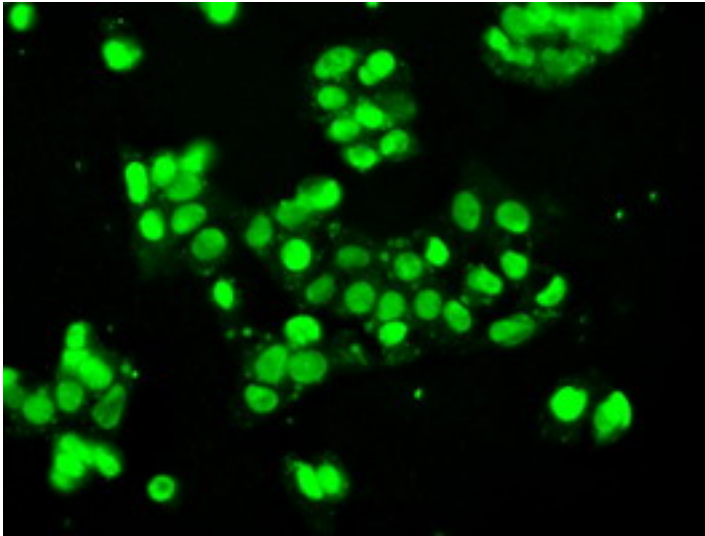
Human Prostate: Formalin-Fixed, Paraffin-Embedded (FFPE)

**Immunofluorescence Image:**



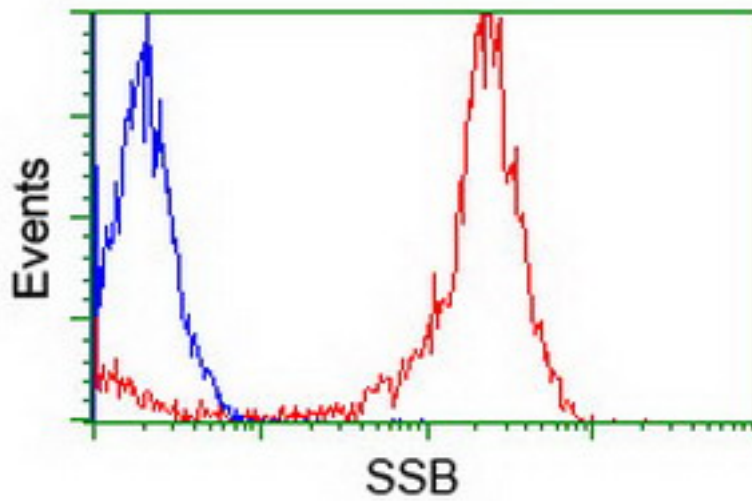
Anti-SSB mouse monoclonal antibody immunofluorescent staining of COS7 cells transiently transfected by pCMV6-ENTRY SSB.

**Immunofluorescence Image:**



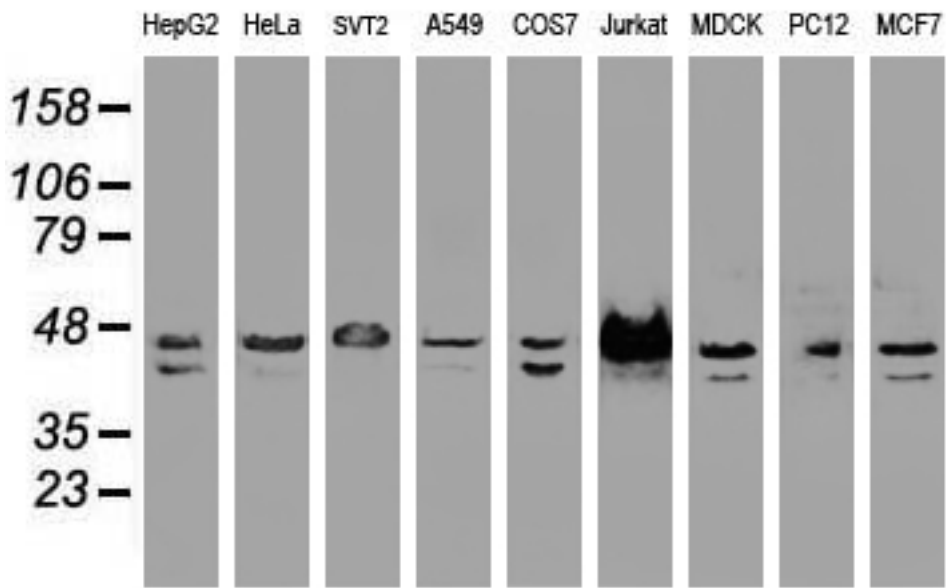
Immunofluorescent staining of HepG2 cells using anti-SSB mouse monoclonal antibody.

**Flow Cytometry Image:**



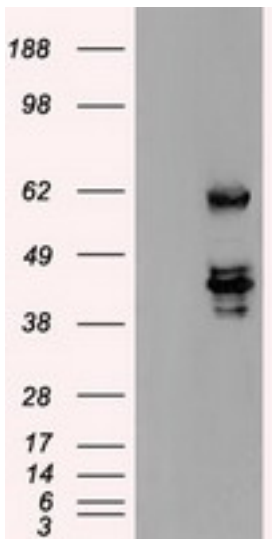
Flow cytometry of Jurkat cells, using anti-SSB antibody (Red), compared to a nonspecific negative control antibody (Blue).

**Western Blot Image:**



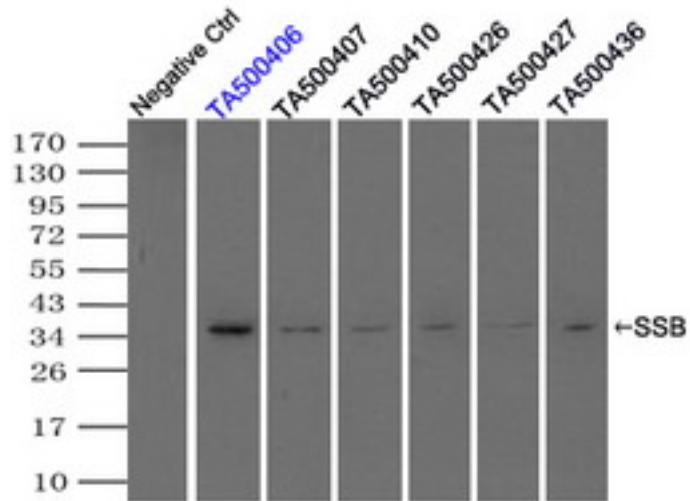
Western blot of extracts (35 ug) from 9 different cell lines by using anti-SSB monoclonal antibody.

**Western Blot Image:**



HEK293T cells were transfected with the pCMV6-ENTRY control (Left lane) or pCMV6-ENTRY SSB (Right lane) cDNA for 48 hrs and lysed. Equivalent amounts of cell lysates (5 ug per lane) were separated by SDS-PAGE and immunoblotted with anti-SSB.

**Immunoprecipitation Image:**



Immunoprecipitation(IP) of SSB by using monoclonal anti-SSB antibodies (Negative control: IP without adding anti-SSB antibody.). For each experiment, 500ul of DDK tagged SSB overexpression lysates (at 1:5 dilution with HEK293T lysate), 2 ug of anti-SSB antibody and 20ul (0.1 mg) of goat anti-mouse conjugated magnetic beads were mixed and incubated overnight. After extensive wash to remove any non-specific binding, the immuno-precipitated products were analyzed with rabbit anti-DDK polyclonal antibody.

**Requested From:**

Japan

Laboratory Reagent For In Vitro Research Use Only

Not for resale without prior written consent from LifeSpan BioSciences, Inc.

Created on 9/23/2014

© 2014 LifeSpan BioSciences