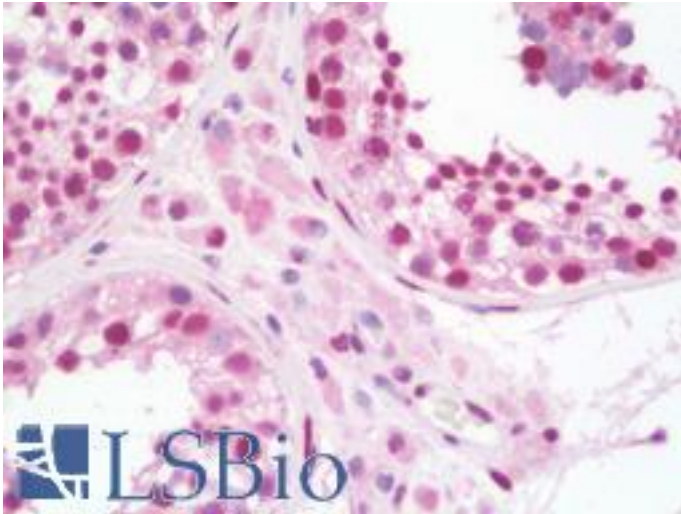


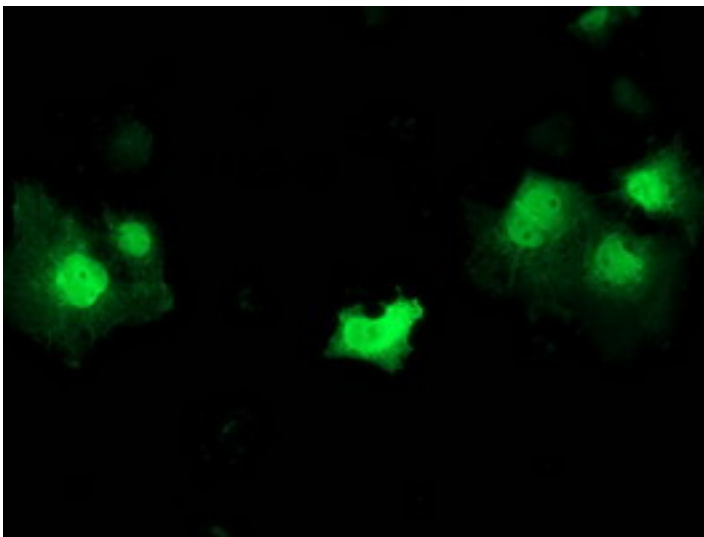
| STAT5A Mouse anti-Human Monoclonal (9F7) Antibody - LS-B10045 - LSBio | |
|---|--|
| CatalogID: | LS-B10045 |
| Validation: | This antibody replaces catalog number LS-C172875. It has been validated for use in the following assays: IHC-P. |
| Target: | signal transducer and activator of transcription 5A (STAT5A) |
| Synonyms: | STAT5A Antibody, MGF Antibody, STAT5 Antibody |
| Host | STAT5A antibody was produced in Mouse |
| Clonality: | Monoclonal |
| Isotype: | IgG1 |
| Clone Name: | 9F7 |
| Immunogen Species: | STAT5A antibody was raised against Human |
| Antigen Type: | Recombinant protein |
| Immunogen: | STAT5A antibody was raised against full length human recombinant protein of human STAT5A (NP_003143) produced in HEK293T cell. |
| Specificity: | Human STAT5A / STAT5 |
| Reactivity: | Human, Monkey, Rat, Dog |
| Purification: | Protein A/G purified |
| Presentation: | PBS, pH 7.3, 1% BSA, 50% glycerol, 0.02% sodium azide |
| Recommended Storage: | Store at -20°C. Minimize freezing and thawing. |
| Uses: | IHC - Paraffin (10 µg/ml), Immunofluorescence (1:100), Western blot (1:500 - 1:2000), Flow Cytometry (1:100) (Optimal dilution to be determined by the researcher) |
| Size: | 50 µl |
| Concentration: | 0.73 mg/ml |

Immunohistochemistry Image:



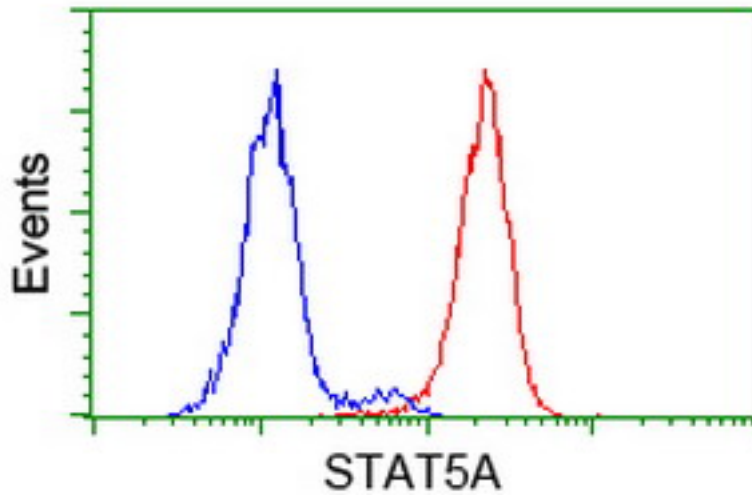
Human Testis: Formalin-Fixed, Paraffin-Embedded (FFPE)

Immunofluorescence Image:



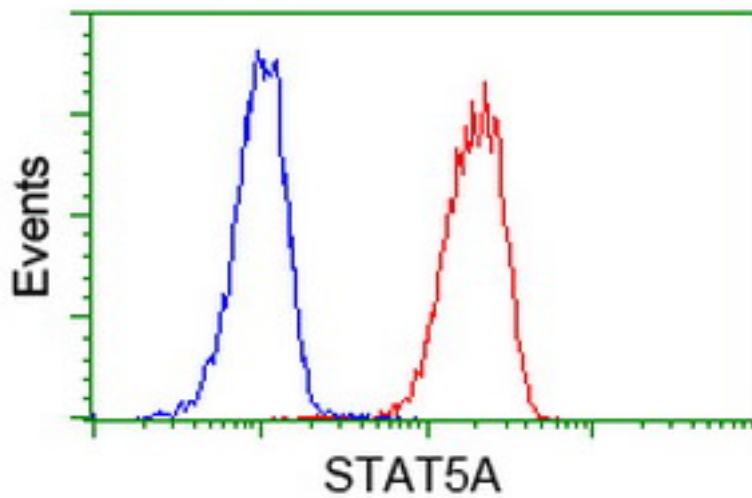
Anti-STAT5A mouse monoclonal antibody immunofluorescent staining of COS7 cells transiently transfected by pCMV6-ENTRY STAT5A.

Flow Cytometry Image:



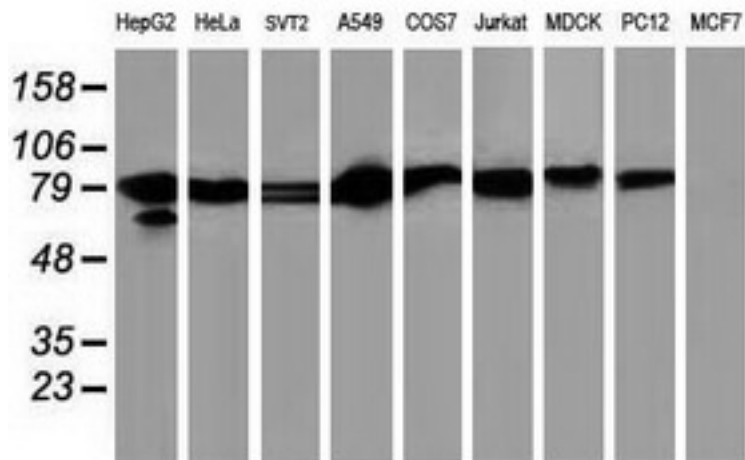
Flow cytometry of HeLa cells, using anti-STAT5A antibody (Red), compared to a nonspecific negative control antibody (Blue).

Flow Cytometry Image:



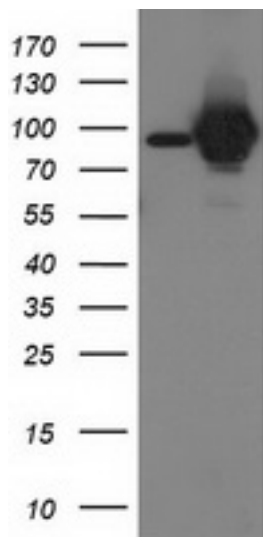
Flow cytometry of Jurkat cells, using anti-STAT5A antibody (Red), compared to a nonspecific negative control antibody (Blue).

Western Blot Image:



Western blot of extracts (35 ug) from 9 different cell lines by using anti-STAT5A monoclonal antibody.

Western Blot Image:



HEK293T cells were transfected with the pCMV6-ENTRY control (Left lane) or pCMV6-ENTRY STAT5A (Right lane) cDNA for 48 hrs and lysed. Equivalent amounts of cell lysates (5 ug per lane) were separated by SDS-PAGE and immunoblotted with anti-STAT5A.

Requested From:

Japan

Laboratory Reagent For In Vitro Research Use Only

Not for resale without prior written consent from LifeSpan BioSciences, Inc.

Created on 9/23/2014

© 2014 LifeSpan BioSciences