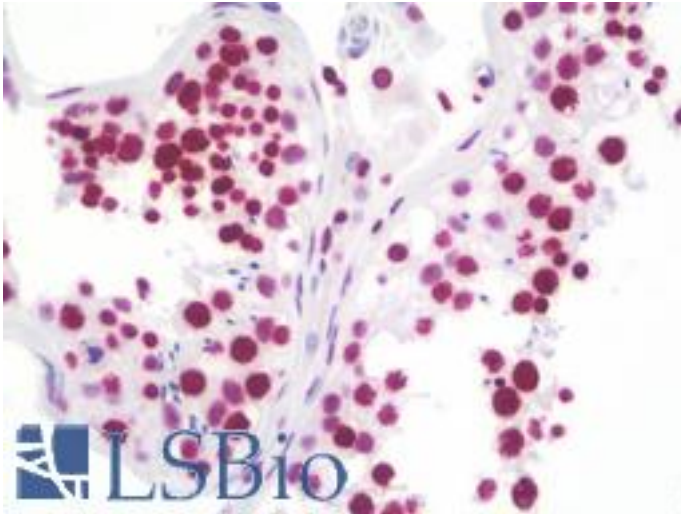


RASSF1 / RASSF1A Mouse anti-Human Monoclonal (8E4) Antibody - LS-B10044 - LSBio

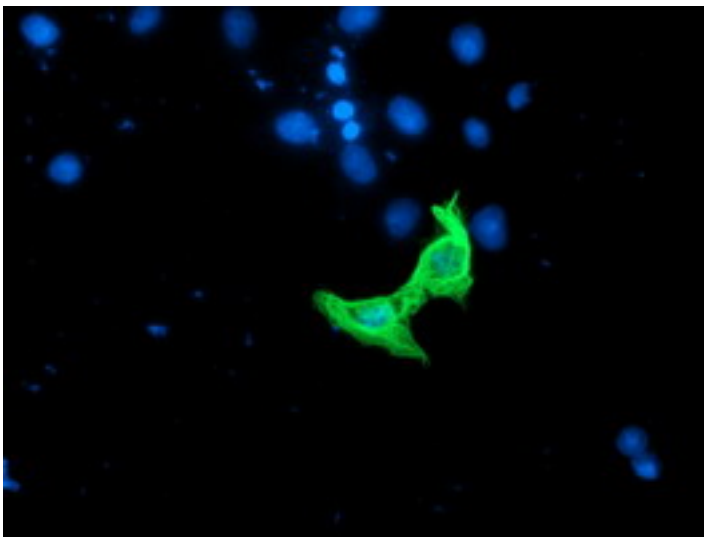
CatalogID:	LS-B10044
Validation:	This antibody replaces catalog number LS-C172716. It has been validated for use in the following assays: IHC-P.
Target:	Ras association (RalGDS/AF-6) domain family member 1 (RASSF1)
Synonyms:	RASSF1 Antibody, 123F2 Antibody, RASSF1A Antibody, RDA32 Antibody, Tumor suppressor protein RDA32 Antibody, NORE2A Antibody, WUGSC:H_LUCA12.5 Antibody, REH3P21 Antibody
Host	RASSF1 antibody was produced in Mouse
Clonality:	Monoclonal
Isotype:	IgG1
Clone Name:	8E4
Immunogen Species:	RASSF1 / RASSF1A antibody was raised against Human
Antigen Type:	Recombinant protein
Immunogen:	RASSF1 / RASSF1A antibody was raised against human recombinant protein fragment corresponding to amino acids 1-341 of human RASSF1(NP_009113) produced in E. coli.
Specificity:	Human RASSF1 / RASSF1A
Reactivity:	Human
Purification:	Protein A/G purified
Presentation:	PBS, pH 7.3, 1% BSA, 50% glycerol, 0.02% sodium azide
Recommended Storage:	Store at -20°C. Minimize freezing and thawing.
Uses:	IHC - Paraffin (10 µg/ml), Immunofluorescence (1:100), Western blot (1:2000), Flow Cytometry (1:100) (Optimal dilution to be determined by the researcher)
Size:	50 µl
Concentration:	1.2 mg/ml

Immunohistochemistry Image:



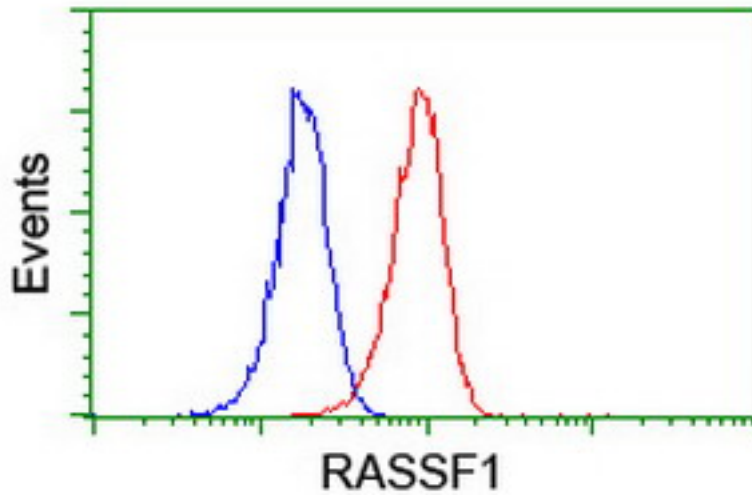
Human Testis: Formalin-Fixed, Paraffin-Embedded (FFPE)

Immunofluorescence Image:



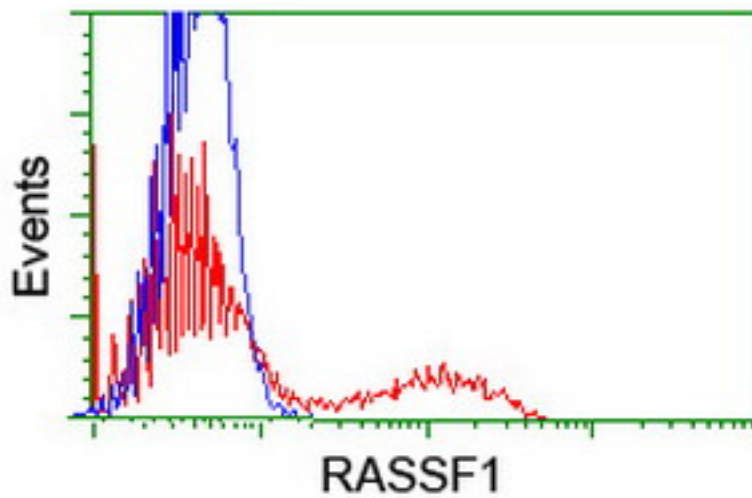
Anti-RASSF1 mouse monoclonal antibody immunofluorescent staining of COS7 cells transiently transfected by pCMV6-ENTRY RASSF1.

Flow Cytometry Image:



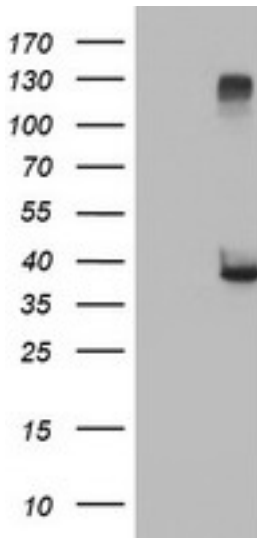
Flow cytometry of Jurkat cells, using anti-RASSF1 antibody (Red), compared to a nonspecific negative control antibody (Blue).

Flow Cytometry Image:



HEK293T cells transfected with either overexpress plasmid (Red) or empty vector control plasmid (Blue) were immunostained by anti-RASSF1 antibody, and then analyzed by flow cytometry.

Western Blot Image:



HEK293T cells were transfected with the pCMV6-ENTRY control (Left lane) or pCMV6-ENTRY RASSF1 (Right lane) cDNA for 48 hrs and lysed. Equivalent amounts of cell lysates (5 ug per lane) were separated by SDS-PAGE and immunoblotted with anti-RASSF1.

Requested From:

Japan

Laboratory Reagent For In Vitro Research Use Only

Not for resale without prior written consent from LifeSpan BioSciences, Inc.

Created on 9/23/2014

© 2014 LifeSpan BioSciences