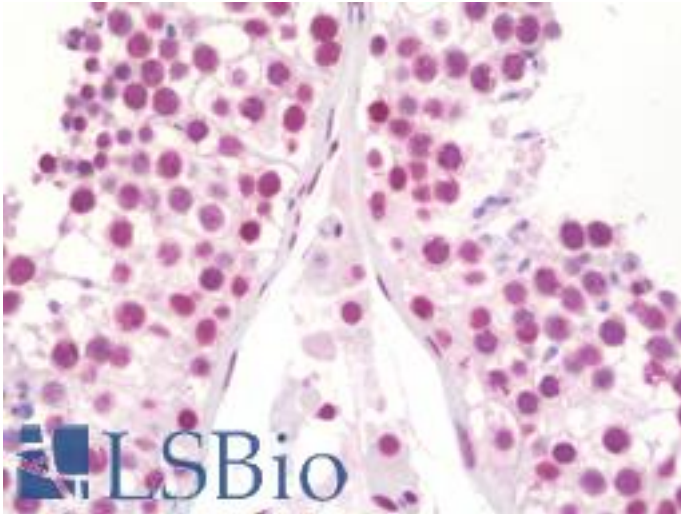


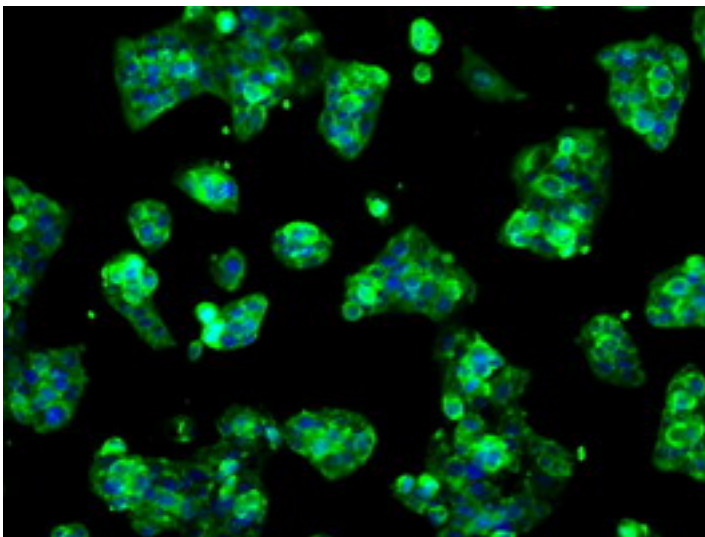
Lysyl Oxidase / LOX Mouse anti-Human Monoclonal (9A11) Antibody - LS-B10043 - LSBio	
CatalogID:	LS-B10043
Validation:	This antibody replaces catalog number LS-C114942. It has been validated for use in the following assays: IHC-P.
Target:	lysyl oxidase (LOX)
Synonyms:	LOX Antibody, Lysyl oxidase Antibody, Protein-lysine 6-oxidase Antibody
Host	LOX antibody was produced in Mouse
Clonality:	Monoclonal
Isotype:	IgG1
Clone Name:	9A11
Immunogen Species:	Lysyl Oxidase / LOX antibody was raised against Human
Antigen Type:	Recombinant protein
Immunogen:	Lysyl Oxidase / LOX antibody was raised against human recombinant protein fragment corresponding to amino acids 22-168 of human LOX (NP_002308) produced in HEK293T cell.
Specificity:	Human Lysyl Oxidase / LOX
Reactivity:	Human
Purification:	Protein A/G purified
Presentation:	PBS, pH 7.3, 1% BSA, 50% glycerol, 0.02% sodium azide
Recommended Storage:	Store at -20°C. Minimize freezing and thawing.
Usage Summary:	Concentration: 0.5-1.0 mg/ml (Lot dependent)
Uses:	IHC - Paraffin (10 µg/ml), Immunofluorescence (1:50 - 1:100), Western blot (1:2000), Flow Cytometry (1:100) (Optimal dilution to be determined by the researcher)
Size:	50 µl
Concentration:	0.8 mg/ml

Immunohistochemistry Image:



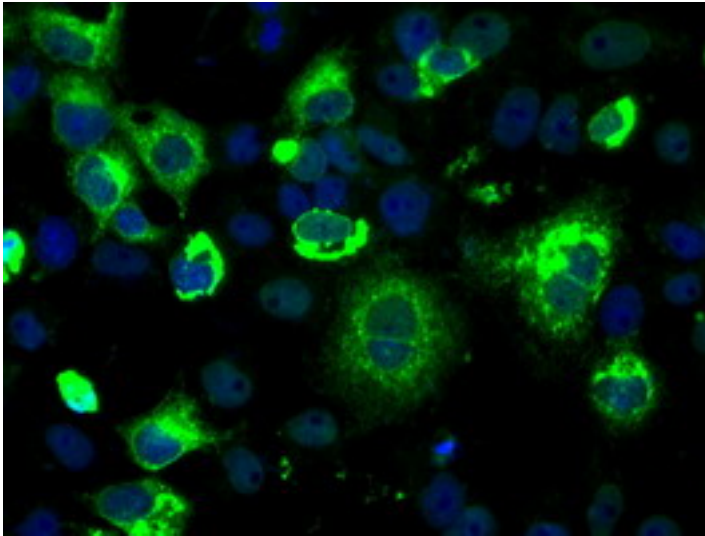
Human Testis: Formalin-Fixed, Paraffin-Embedded (FFPE)

Immunofluorescence Image:



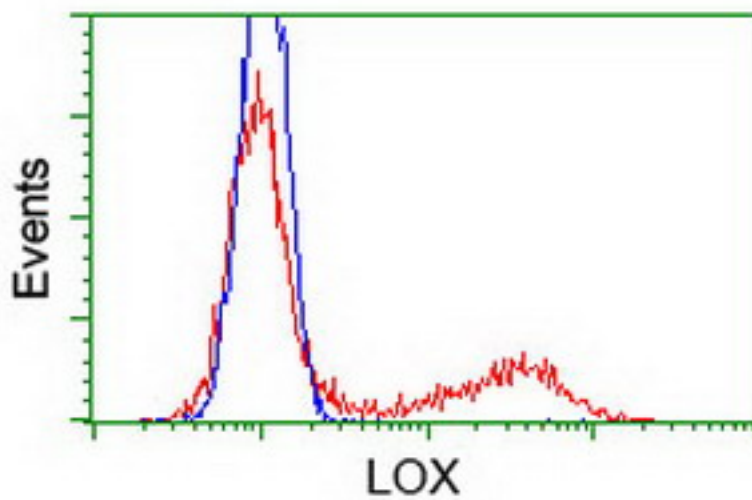
Immunofluorescent staining of HepG2 cells using anti-LOX mouse monoclonal antibody.

Immunofluorescence Image:



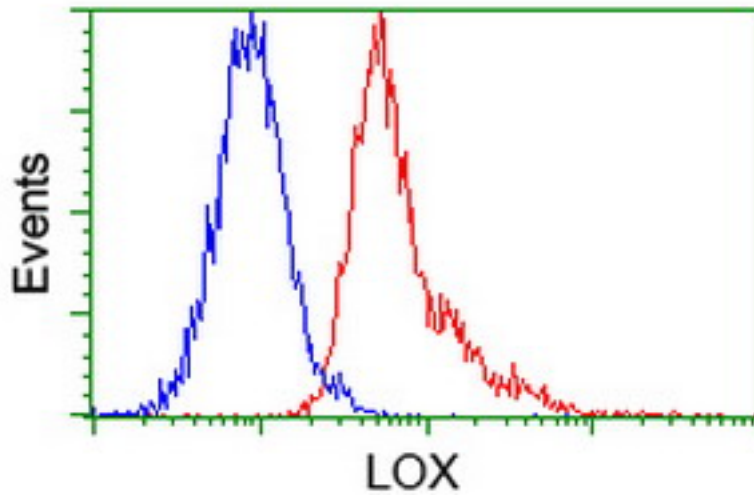
Anti-LOX mouse monoclonal antibody immunofluorescent staining of COS7 cells transiently transfected by pCMV6-ENTRY LOX.

Flow Cytometry Image:



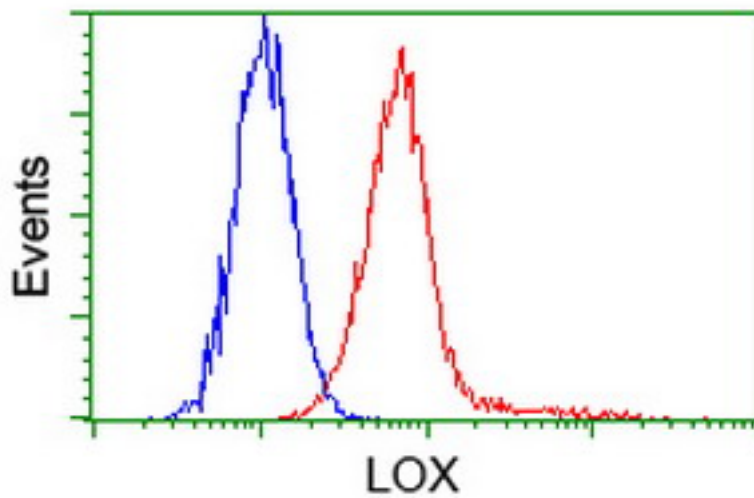
HEK293T cells transfected with either pCMV6-ENTRY LOX (Red) or empty vector control plasmid (Blue) were immunostained with anti-LOX mouse monoclonal (Dilution 1:1,000), and then analyzed by flow cytometry.

Flow Cytometry Image:



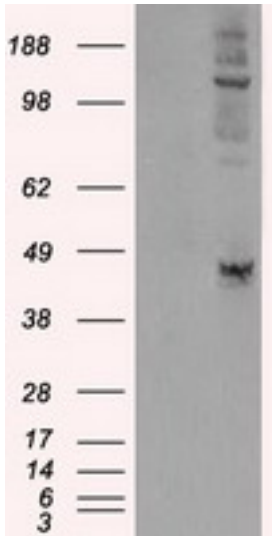
Flow cytometry of Jurkat cells, using anti-LOX antibody, (Red) compared to a nonspecific negative control antibody (Blue).

Flow Cytometry Image:



Flow cytometry of HeLa cells, using anti-LOX antibody, (Red) compared to a nonspecific negative control antibody (Blue).

Western Blot Image:



HEK293T cells were transfected with the pCMV6-ENTRY control (Left lane) or pCMV6-ENTRY LOX (Right lane) cDNA for 48 hrs and lysed. Equivalent amounts of cell lysates (5 ug per lane) were separated by SDS-PAGE and immunoblotted with anti-LOX.

Requested From:

Japan

Laboratory Reagent For In Vitro Research Use Only

Not for resale without prior written consent from LifeSpan BioSciences, Inc.

Created on 9/23/2014

© 2014 LifeSpan BioSciences