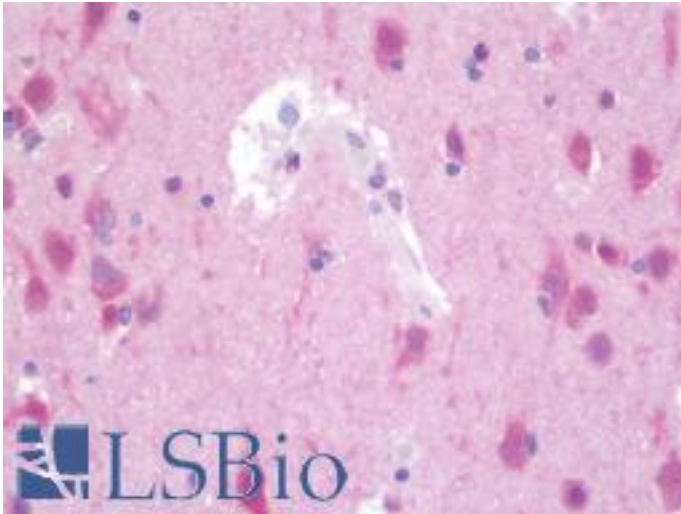


**FGF2 / BFGF Mouse anti-Human Monoclonal (3D9) Antibody - LS-B10042 - LSBio**

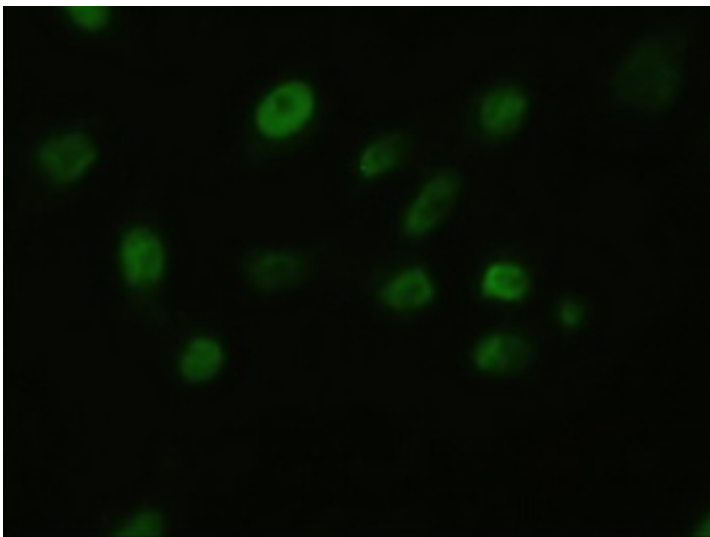
<b>CatalogID:</b>	LS-B10042
<b>Validation:</b>	This antibody replaces catalog number LS-C114309. It has been validated for use in the following assays: IHC-P.
<b>Target:</b>	fibroblast growth factor 2 (basic) (FGF2)
<b>Synonyms:</b>	FGF2 Antibody, Basic fibroblast growth factor Antibody, FGFB Antibody, Fibroblast growth factor 2 Antibody, FGF-2 Antibody, Prostatropin Antibody, BFGF Antibody, HBGF-2 Antibody
<b>Family / Subfamily:</b>	HBGF / not assigned-HBGF
<b>Host</b>	FGF2 antibody was produced in Mouse
<b>Clonality:</b>	Monoclonal
<b>Isotype:</b>	IgG2b
<b>Clone Name:</b>	3D9
<b>Immunogen Species:</b>	FGF2 / BFGF antibody was raised against Human
<b>Antigen Type:</b>	Recombinant protein
<b>Immunogen:</b>	FGF2 / BFGF antibody was raised against human recombinant protein fragment corresponding to amino acids 10-155 of human bFGF (NP_001997) produced in E. coli.
<b>Specificity:</b>	Human FGF2 / BFGF
<b>Reactivity:</b>	Human
<b>Purification:</b>	Protein A/G purified
<b>Presentation:</b>	PBS, pH 7.3, 1% BSA, 50% glycerol, 0.02% sodium azide
<b>Recommended Storage:</b>	Store at -20°C. Minimize freezing and thawing.
<b>Usage Summary:</b>	Concentration: 0.5-1.0 mg/ml (Lot dependent)
<b>Uses:</b>	IHC - Paraffin (10 µg/ml), Immunofluorescence (1:100), Western blot (1:1000) (Optimal dilution to be determined by the researcher)
<b>Size:</b>	50 µl
<b>Concentration:</b>	0.83 mg/ml

**Immunohistochemistry Image:**



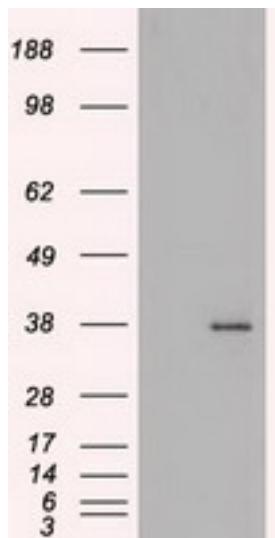
Human Brain, Cortex: Formalin-Fixed, Paraffin-Embedded (FFPE)

**Immunofluorescence Image:**



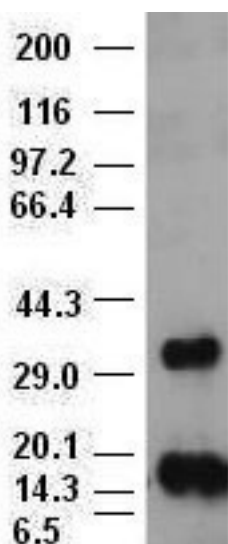
Anti-BFGF mouse monoclonal antibody immunofluorescent staining of COS7 cells transiently transfected by pCMV6-ENTRY BFGF.

**Western Blot Image:**



HEK293T cells were transfected with the pCMV6-ENTRY control (Left lane) or pCMV6-ENTRY BFGF (Right lane) cDNA for 48 hrs and lysed. Equivalent amounts of cell lysates (5 ug per lane) were separated by SDS-PAGE and immunoblotted with anti-BFGF.

**Western Blot Image:**



bFGF antibody (3D9) at 1:1000 + Recombinant human bFGF.

**Requested From:**

Japan

Laboratory Reagent For In Vitro Research Use Only

Not for resale without prior written consent from LifeSpan BioSciences, Inc.

Created on 9/23/2014

© 2014 LifeSpan BioSciences