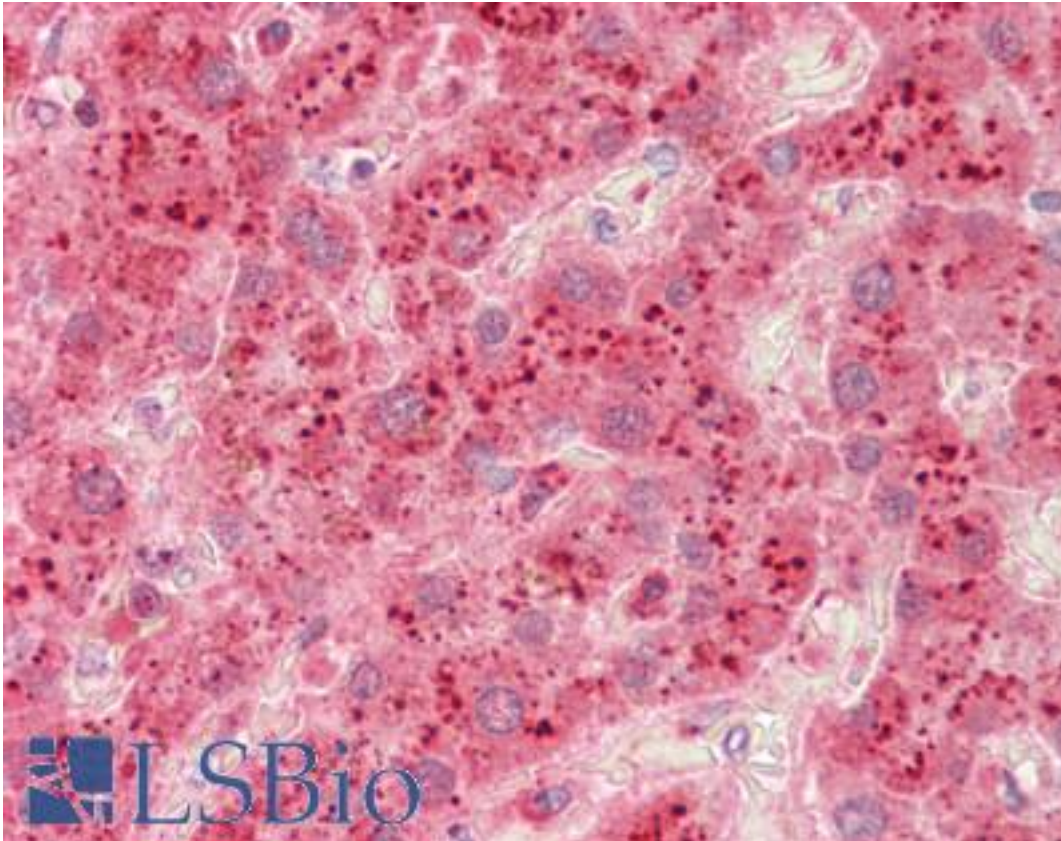


Beta Galactosidase Rabbit anti-Human Polyclonal (aa166-677) Antibody - LS-B10038 - LSBio

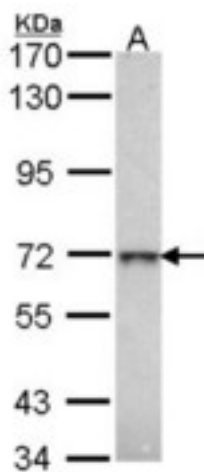
<b>CatalogID:</b>	LS-B10038
<b>Validation:</b>	This antibody replaces catalog number LS-C185614. It has been validated for use in the following assays: IHC-P.
<b>Target:</b>	Beta Galactosidase
<b>Host</b>	Rabbit
<b>Clonality:</b>	Polyclonal
<b>Isotype:</b>	IgG
<b>Immunogen Species:</b>	Human
<b>Antigen Type:</b>	Recombinant protein
<b>Immunogen:</b>	Recombinant fragment corresponding to a region within amino acids 166 and 677 of beta-Gal (SwissProt P16278). Percent identity by BLAST analysis: Human (100%); Dog (82%); Cat (81%).
<b>Specificity:</b>	Beta Galactosidase
<b>Epitope:</b>	aa166-677
<b>Reactivity:</b>	Human
<b>Purification:</b>	Immunoaffinity purified
<b>Presentation:</b>	0.1 M Tris-glycine, pH 7.0, 10% glycerol, 0.01% Thimerosal
<b>Recommended Storage:</b>	Keep as concentrated solution. Aliquot and store at -20°C or below. Avoid multiple freeze-thaw cycles.
<b>Uses:</b>	IHC - Paraffin (5 µg/ml), Western blot (1:500 - 1:3000) (Optimal dilution to be determined by the researcher)
<b>Size:</b>	50 µl
<b>Concentration:</b>	1 mg/ml

**Immunohistochemistry Image:**



Human Liver: Formalin-Fixed, Paraffin-Embedded (FFPE)

**Western Blot Image:**



Sample (30 ug of whole cell lysate). A: H1299. 7.5% SDS PAGE. Beta Galactosidase antibody diluted at 1:1000.

Requested From:

Japan

Laboratory Reagent For In Vitro Research Use Only

Not for resale without prior written consent from LifeSpan BioSciences, Inc.

Created on 9/23/2014

© 2014 LifeSpan BioSciences